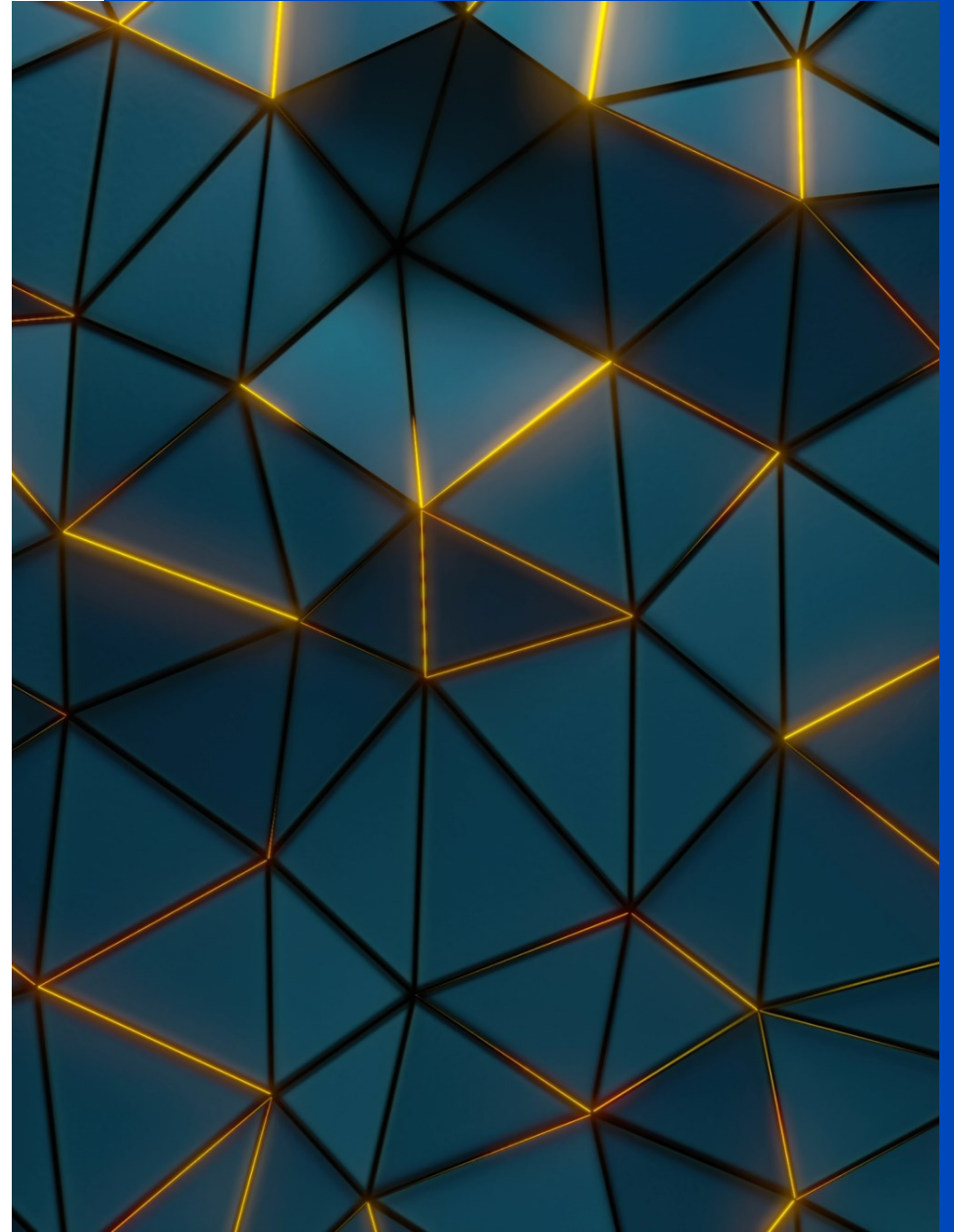




Capital Efficiency: Innovating Portfolios & Enhancing Allocations



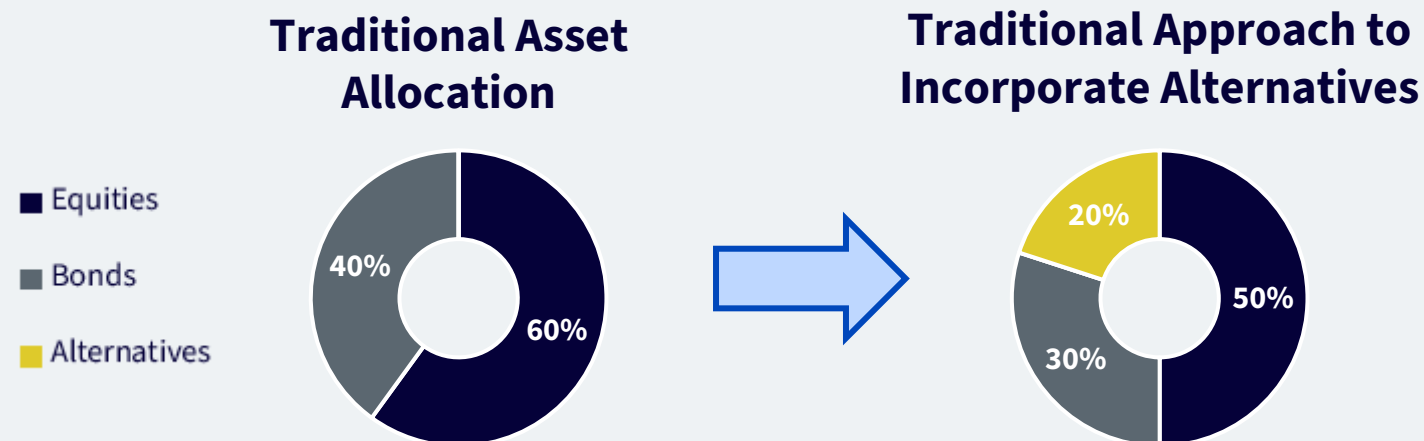
Portfolio Paradox: Incorporating Alternatives Historically Required Reducing Existing Portfolio Exposures



Incorporating alternative investment strategies can help enhance traditional portfolios by improving diversification and incorporating differentiated sources of return

- + For most investors, a key disadvantage of incorporating alternatives is the need to fund the allocation by selling existing, longstanding exposures

This often results in portfolios that are more “efficient” from a risk-adjusted return standpoint but may have lower expected returns.



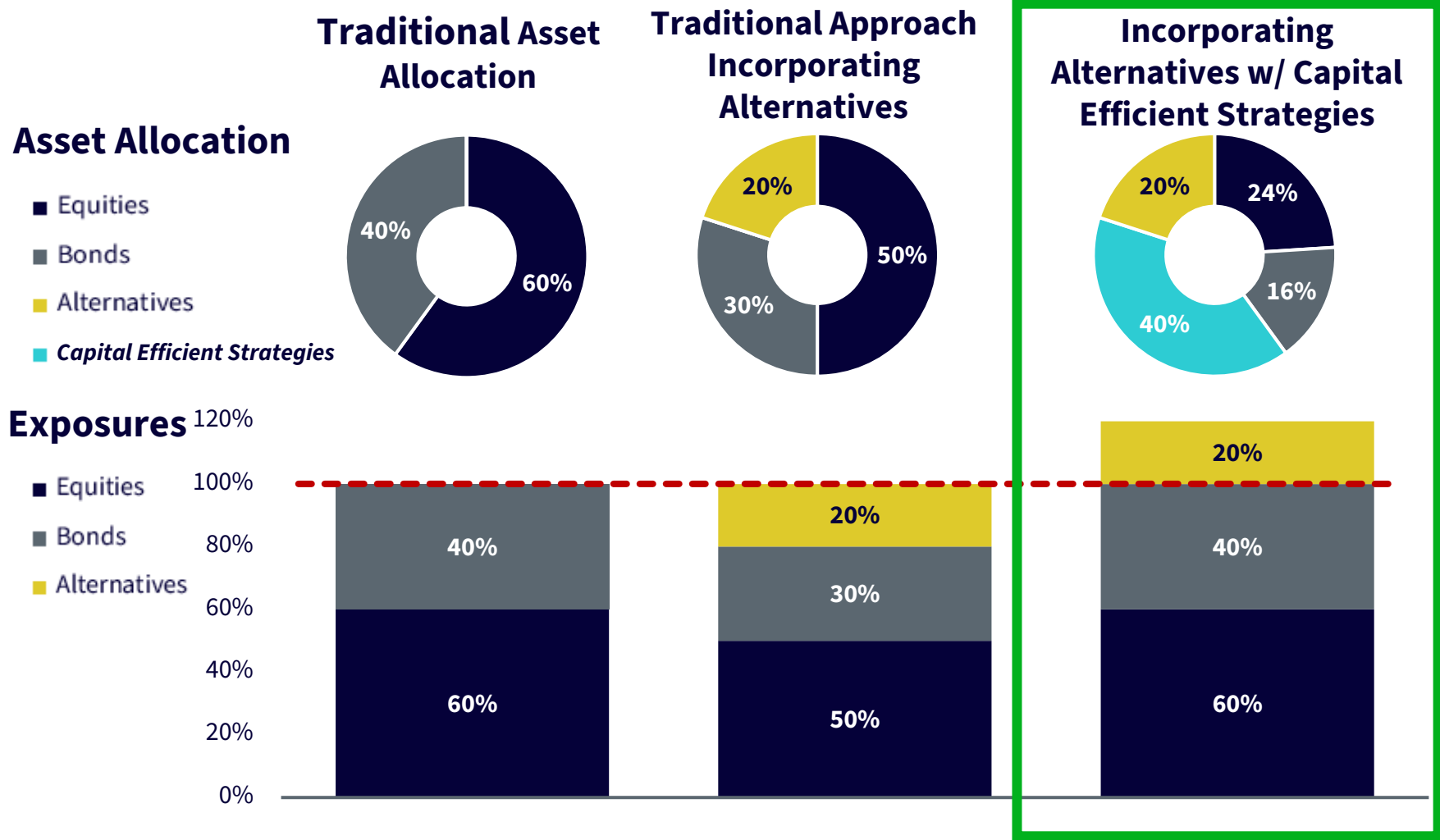
Source: WisdomTree; For illustrative purposes only.

Example: Funding Alternatives with Capital Efficient Strategies



A New Era of Smart Portfolio Construction

Unlike traditional approaches to diversification, capital efficient strategies allow investors to **incorporate alternatives without reducing existing, longstanding exposures.**



Source: WisdomTree; For illustrative purposes only.

Capital Efficiency: Innovating Portfolios & Enhancing Allocations



- **Problem:** “I like Gold/Commodities/Alternatives, but I don’t want to sell core equities or bonds to fund that allocation.”
- **Legacy Solution:** Free up capital from core allocations to incorporate diversifiers, inflation hedges, and/or alpha strategies
- **Capital Efficient Solution:** Utilize overlay strategies within liquid ETFs to simplify asset allocation, implementation, rebalancing and operational complexity within portfolios

Efficient Core ETFs Provides capital efficient exposure to core equities & fixed income	NTSX WisdomTree U.S. Efficient Core Fund	NTSI WisdomTree International Efficient Core Fund
	NTSE WisdomTree Emerging Markets Efficient Core Fund	NTSD WisdomTree Efficient U.S. Plus International Equity Fund
Efficient Gold and Commodity ETFs Provides capital efficient exposure to commodities & other diversifiers atop a portfolio of equities/TIPS	GDE WisdomTree Efficient Gold Plus Equity Strategy	GDMN WisdomTree Efficient Gold Plus Gold Miners Strategy
	WTIP WisdomTree Inflation Plus Fund	GDT WisdomTree Efficient TIPS Plus Gold Fund

WisdomTree Capital Efficient ETFs: Notional Exposure Heat Map



Ticker	Name	U.S. Equities	International Developed Equities	Emerging Market Equities	Global Gold Miner Equities	U.S. Treasuries	U.S. Treasury Inflation-Protected Securities (TIPS)	Gold/Precious Metals	Long/Short Commodities	Bitcoin
NTSX	WisdomTree U.S. Efficient Core Fund	90%				60%				
NTSI	WisdomTree International Efficient Core Fund		90%			60%				
NTSE	WisdomTree Emerging Markets Efficient Core Fund			90%		60%				
NTSD	WisdomTree Efficient U.S. Plus International Equity Fund	90%	60%							
GDE	WisdomTree Efficient Gold Plus Equity Strategy	90%						90%		
GDMN	WisdomTree Efficient Gold Plus Gold Miners Strategy	90%			90%					
WTIP	WisdomTree Inflation Plus Fund						85%	15%	80%	5%
GDT	WisdomTree Efficient TIPS Plus Gold Fund						90%	90%		

Important Information



Please see the [WisdomTree Glossary](#) for definitions of terms and indexes.

Investors should carefully consider the investment objectives, risks, charges and expenses of the Fund before investing. For a prospectus or, if available, the summary prospectus containing this and other important information about the fund, call 866.909.9473 or visit [WisdomTree.com/investments](https://www.wisdomtree.com/investments). Read the prospectus or, if available, the summary prospectus carefully before investing.

There are risks associated with investing, including possible loss of principal. While the Fund is actively managed, the Fund's investment process is expected to be heavily dependent on quantitative models and the models may not perform as intended. Equity securities, such as common stocks, are subject to market, economic and business risks that may cause their prices to fluctuate. The Fund invests in derivatives to gain exposure to U.S. Treasuries. The return on a derivative instrument may not correlate with the return of its underlying reference asset. The Fund's use of derivatives will give rise to leverage and derivatives can be volatile and may be less liquid than other securities. As a result, the value of an investment in the Fund may change quickly and without warning and you may lose money. Interest rate risk is the risk that fixed income securities, and financial instruments related to fixed income securities, will decline in value because of an increase in interest rates and changes to other factors, such as perception of an issuer's creditworthiness. Please read the Fund's prospectus for specific details regarding the Fund's risk profile.

Foreign investing involves currency, political and economic risk. Funds focusing on a single country or sector and/or funds that emphasize investments in smaller companies may experience greater price volatility. Investments in emerging markets, real estate, currency, fixed income and alternative investments include additional risks.

Diversification does not eliminate the risk of experiencing investment losses. Neither WisdomTree, Inc., nor its affiliates, nor Foreside Fund Services, LLC, or its affiliates provide tax advice. All references to tax matters or information provided in this material are for illustrative purposes only and should not be considered tax advice and cannot be used for the purpose of avoiding tax penalties. Investors seeking tax advice should consult an independent tax advisor.

WisdomTree Funds are distributed by Foreside Fund Services, LLC in the U.S.

©2026 WisdomTree, Inc. "WisdomTree" and the company logo are registered trademarks of WisdomTree, Inc.