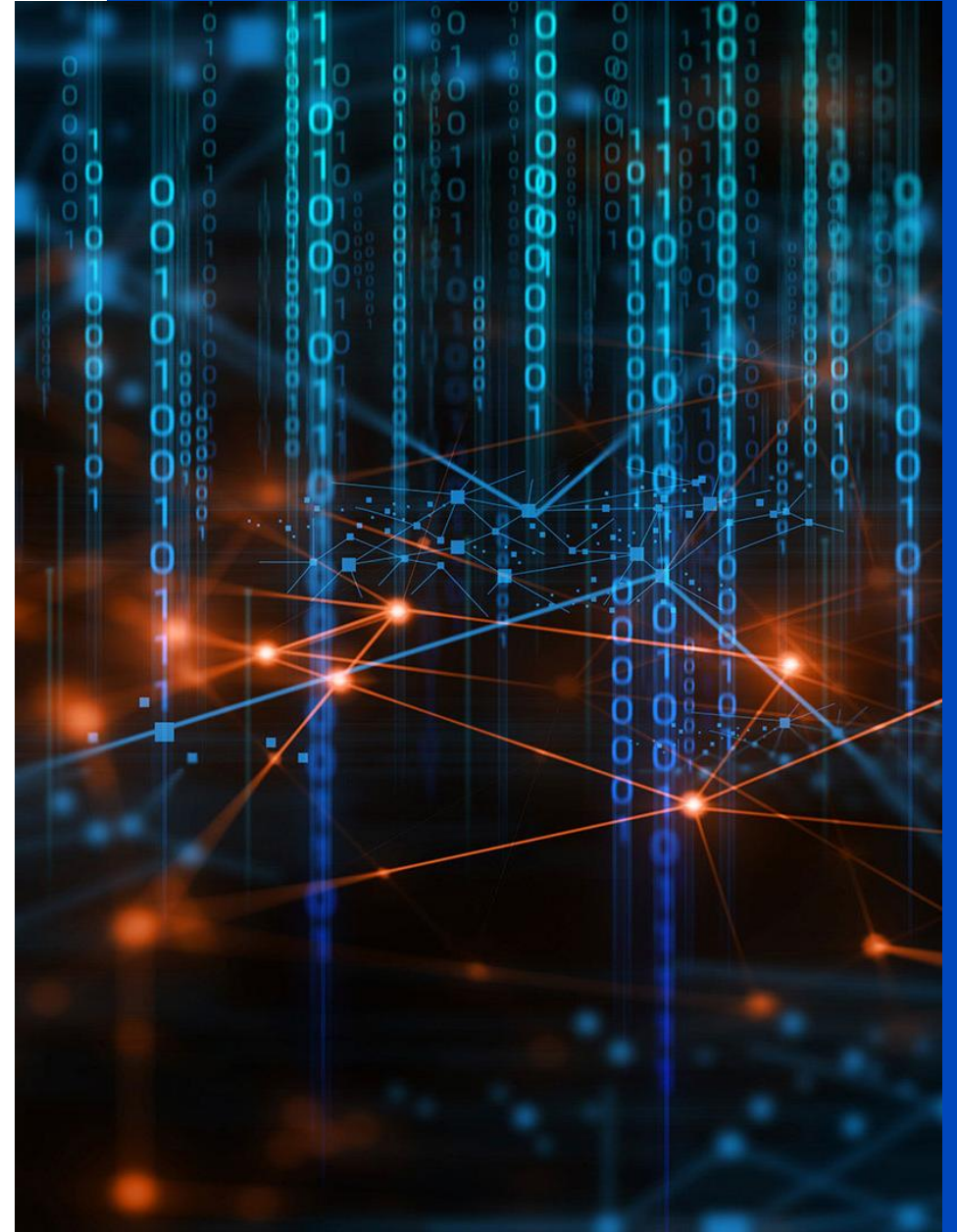




Q1-2026

WisdomTree International  
Quality Dividend Growth Fund  
(IQDGI)



# WisdomTree Company Overview



## + Who We Are

WisdomTree is a global financial innovator, empowering investors to shape their future and supporting financial professionals to better serve their clients and grow their businesses.

## + WisdomTree Solutions

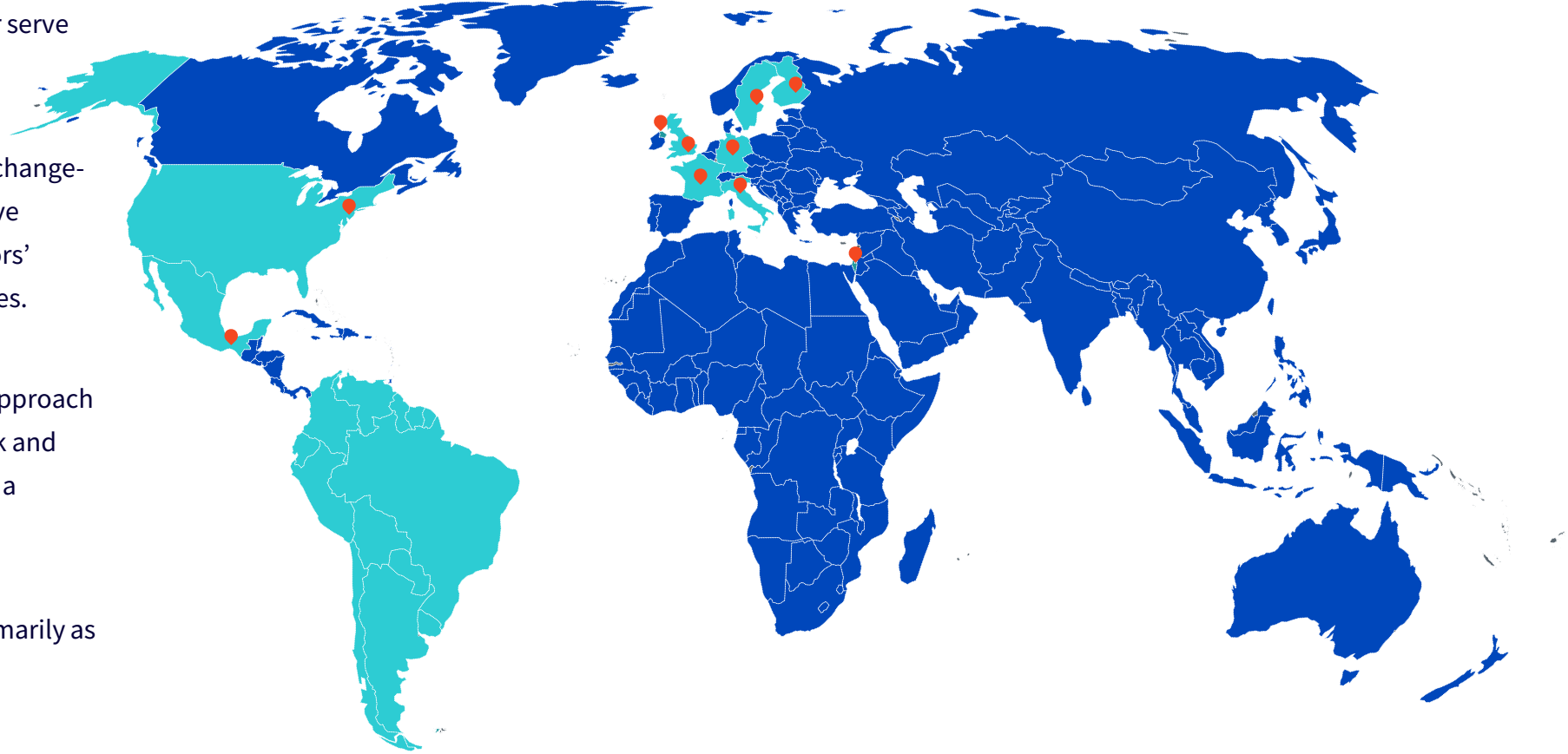
WisdomTree manages \$150.6 billion\* in exchange-traded products globally, through innovative solutions that are designed to meet investors' needs across asset classes and market cycles.

## + Investment Philosophy & Approach

Our belief that a fundamentally weighted approach can produce attractive returns with less risk and expense than active management made us a pioneer in factor-based investing.

## + What We Can Deliver

Our investment strategies are available primarily as ETFs which can provide intra-day liquidity, transparency, and tax efficiency.

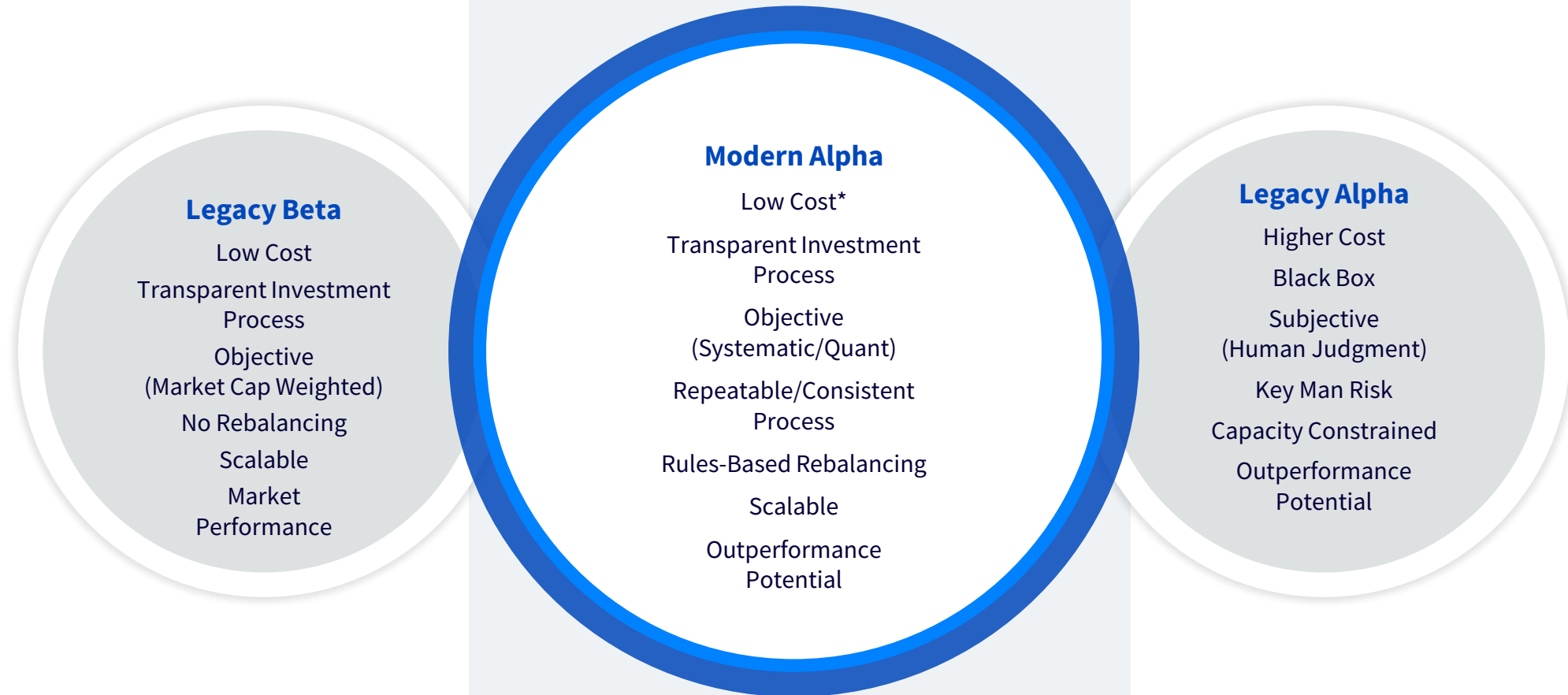


\*As of March 31, 2026

# WisdomTree Modern Alpha®



Modern Alpha combines the outperformance potential of active with the benefits of passive— to offer investors strategies that are built to perform.



\* Ordinary brokerage commissions apply.

# WisdomTree Research Team

Globally integrated research team  
focused on all major asset classes  
including equities, fixed income,  
commodities, and alternatives.



**Professor Jeremy Siegel, PhD**

Senior Economist to WisdomTree  
and Emeritus Professor of Finance,  
The Wharton School of the  
University of Pennsylvania



**Jeremy Schwartz, CFA**

Global CIO



**Christopher Gannatti, CFA**

Global Head of Research



**Kevin Flanagan**

Head of Investment and Fixed  
Income Strategy



**Jeff Weniger, CFA**

Head of Equity Strategy



**Rick Harper**

CIO, Fixed Income &  
Model Portfolios



**Alejandro Saltiel, CFA**

Head of Indexes, U.S.



**Matt Wagner, CFA**

Director, Research



**Liqian Ren**

Director of Modern Alpha

**\$150.6B\***

EXCHANGE-TRADED PRODUCTS  
GLOBALLY

**30+**

PROFESSIONALS ON GLOBAL  
RESEARCH TEAM

**15+**

PHD, CFA, & CIMA® DESIGNATIONS

\*As of March 31, 2026



# WisdomTree International Quality Dividend Growth Fund (IQDG)

# Our Philosophy



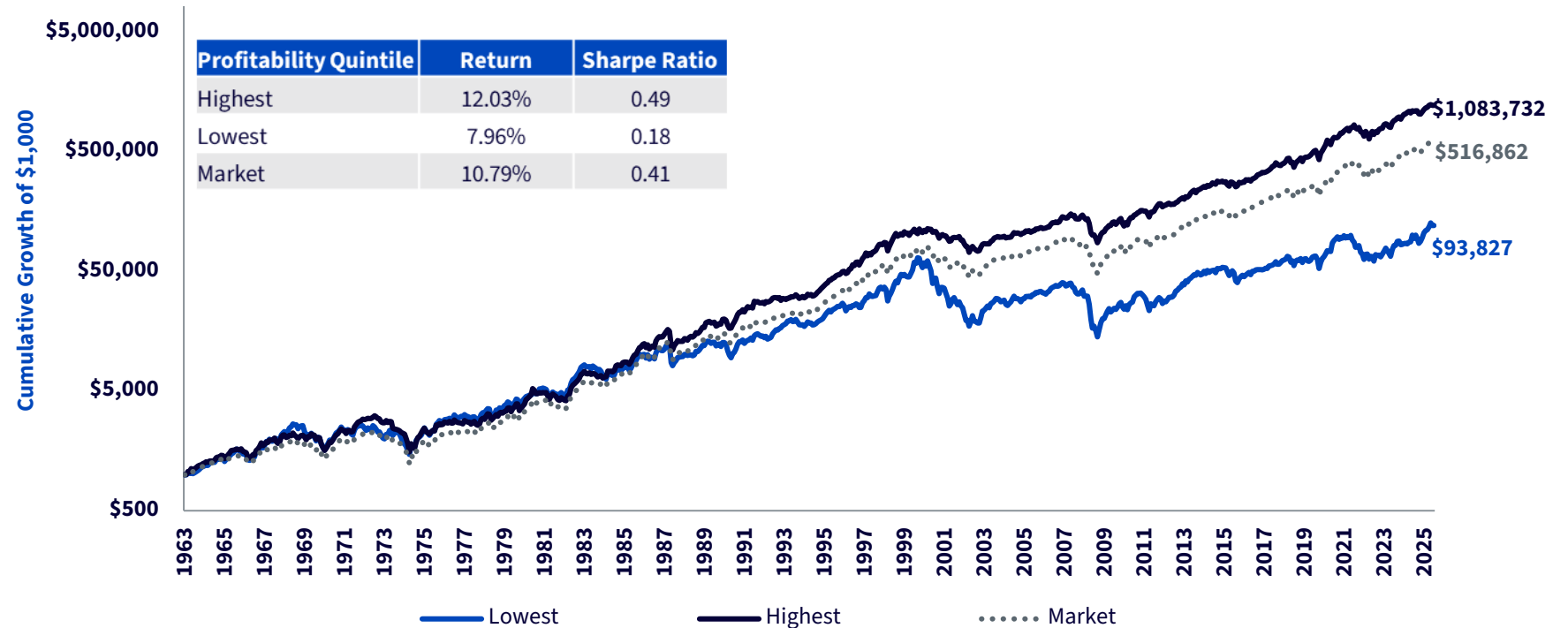
- ▶ Pricing Errors & Return Premiums Exist
- ▶ Fundamentals Matter
- ▶ The Concept of Relative Value is Important

# Why We Focus on Quality



- + Higher operating profitability (i.e., higher quality) has outpaced lower quality over time.
- + A quality factor is designed to ensure companies in the portfolio are healthy and can deliver results over time.
- + Our proprietary methodology identifies forward-looking dividend growth potential as a way of defining quality.

Historically, Investing in Higher-Quality Companies Enhanced Returns



Source: Kenneth French Data Library, with data as of 12/31/25. Period based on availability of annual operating profitability returns sorted into quintiles, which begins June 30, 1963. Market is the value-weight return of all CRSP firms incorporated in the U.S. and listed on the NYSE, AMEX, or NASDAQ that meet specified criteria. **Past performance is not indicative of future results.**

# WisdomTree International Quality Dividend Growth Fund Performance



Data as of March 31, 2026

Name	Cumulative Returns		Average Annual Total Returns as of March 31, 2026				
	QTD	YTD	1-Year	3-Year	5-Year	10-Year	Since Inception
WisdomTree International Quality Dividend Growth Fund (NAV)	-4.82%	-4.82%	13.88%	7.61%	3.97%	N/A	7.15%
WisdomTree International Quality Dividend Growth Fund (Market Price)	-2.77%	-2.77%	15.32%	8.12%	4.27%	N/A	7.38%
MSCI EAFE Index	-1.24%	-1.24%	21.27%	13.62%	7.91%	N/A	8.67%
<b>Excess Return (NAV)</b>	<b>-3.58%</b>	<b>-3.58%</b>	<b>-7.39%</b>	<b>-6.01%</b>	<b>-3.94%</b>	<b>N/A</b>	<b>-1.53%</b>

Name	Calendar Year Returns								
	2025	2024	2023	2022	2021	2020	2019	2018	2017
WisdomTree International Quality Dividend Growth Fund (NAV)	23.46%	-2.70%	20.85%	-20.15%	12.38%	16.64%	29.91%	-17.04%	31.39%
MSCI EAFE Index	31.22%	3.82%	18.24%	-14.45%	11.26%	7.82%	22.01%	-13.79%	25.03%
<b>Excess Return (NAV)</b>	<b>-7.76%</b>	<b>-6.52%</b>	<b>2.61%</b>	<b>-5.69%</b>	<b>1.12%</b>	<b>8.83%</b>	<b>7.90%</b>	<b>-3.25%</b>	<b>6.36%</b>

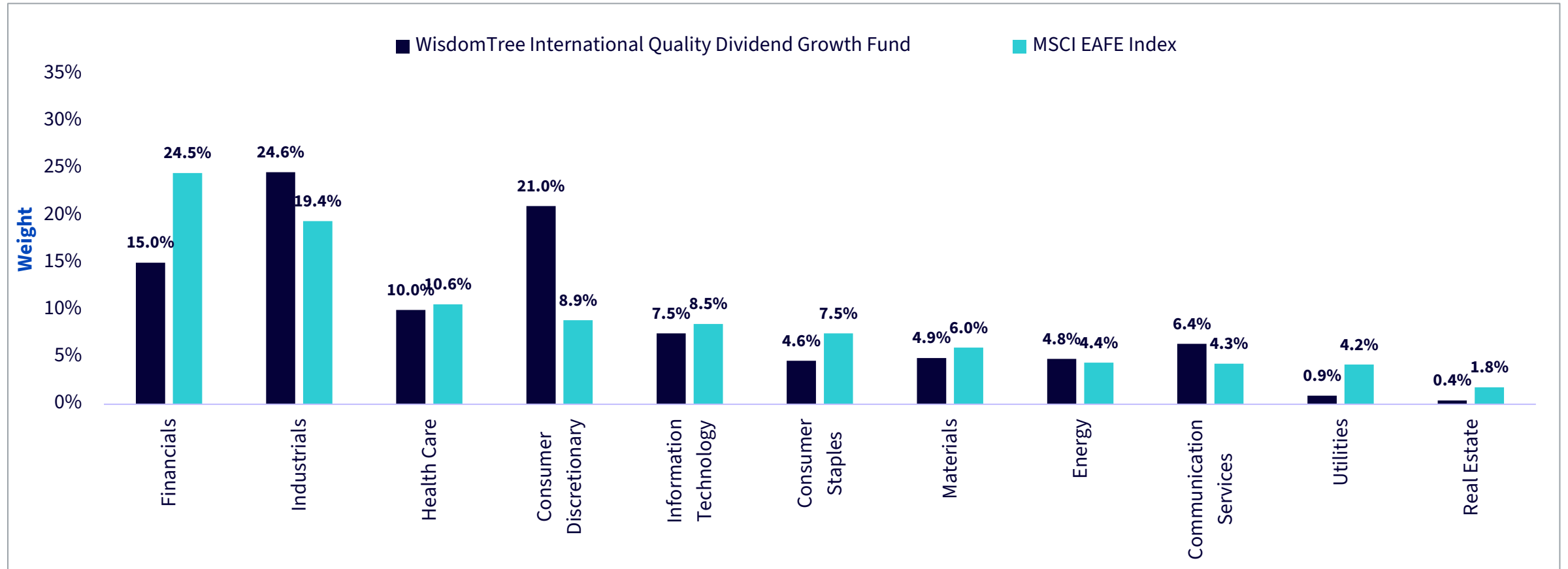
Fund Details				
Name	Ticker	Inception Date	Gross Expense Ratio	Net Expense Ratio
WisdomTree International Quality Dividend Growth Fund	IQDG	04/07/2016	0.42%	0.42%

Performance is historical and does not guarantee future results. Current performance may be lower or higher than quoted. Investment returns and principal value of an investment will fluctuate so that an investor's shares, when redeemed, may be worth more or less than their original cost. Performance data for the most recent month-end is available at [wisdomtree.com/investments](http://wisdomtree.com/investments). WisdomTree shares are bought and sold at market price (not NAV) and are not individually redeemed from the Fund. Total Returns are calculated using the daily 4:00 p.m. EST net asset value (NAV). Market price returns reflect the midpoint of the bid/ask spread as of the close of trading on the exchange where Fund shares are listed. Market price returns do not represent the returns you would receive if you traded shares at other times. You cannot invest directly in an index. Sources: WisdomTree, FactSet.

# WisdomTree International Quality Dividend Growth Fund Sector Weights



Data as of March 31, 2026



Source: WisdomTree and FactSet.  
Sector weights are subject to change. You cannot invest directly in an index.

# WisdomTree International Quality Dividend Growth Fund Country Weights



Data as of March 31, 2026

Country	WisdomTree International Quality Dividend Growth Fund	MSCI EAFE Index	Over/Under Weight
Japan	19.34%	22.64%	-3.30%
United Kingdom	17.22%	15.30%	1.92%
France	13.33%	9.47%	3.86%
Germany	9.94%	9.04%	0.90%
Netherlands	7.35%	5.89%	1.46%
Spain	7.13%	3.91%	3.21%
Switzerland	5.99%	9.43%	-3.44%
Sweden	5.40%	3.24%	2.16%
Australia	2.49%	6.66%	-4.17%
Denmark	2.18%	1.65%	0.53%
Other	9.62%	12.76%	-3.14%
Total	100%	100%	0%

Holdings and weights subject to change.  
Source: WisdomTree, FactSet.

# WisdomTree International Quality Dividend Growth Fund Characteristics



Data as of March 31, 2026

Characteristics	WisdomTree International Quality Dividend Growth Fund	MSCI EAFE Index
<b>Size</b>		
Weighted Average Market Cap (\$bn)	110.07	105.15
Median Market Cap (\$bn)	13.17	19.19
Over \$10 billion	91.72%	95.87%
\$2 billion - \$10 billion	8.28%	4.13%
Under \$2 billion	0.00%	0.00%
<b>Valuation &amp; Other Characteristics</b>		
Price/Earnings (Trailing)	17.03	17.59
Price/Book	2.61	2.20
Return on Equity	15.40%	12.17%
Dividend Yield	2.76%	2.75%
SEC 30-Day Yield	1.93%	N/A
Number of Holdings	262	690
<b>Risk (Since Inception*)</b>		
Standard Deviation	15.96%	15.01%
Sharpe Ratio	0.29	0.39
Information Ratio	-0.26	0.00
Up Capture	101.45%	100.00%
Down Capture	106.79%	100.00%
Alpha	-1.33%	0.00%
Beta	1.01	1.00

Source: WisdomTree, FactSet. \*Beginning first full month following inception on 04/07/2016  
**Past performance is not indicative of future results. You cannot invest directly in an index.**

# WisdomTree International Quality Dividend Growth Fund Factor Breakdown



Factor Calculation for May 31, 2016 to February 28, 2026

Name	Mkt-RF (Beta)	SMB (Size)	HML (Value)	RMW (Quality)	CMA (Investment)
WisdomTree International Quality Dividend Growth Fund	1.01	-0.16	-0.34	0.26	0.17
MSCI EAFE Index	1.00	-0.15	0.00	0.01	0.05

May 31, 2016 represents the beginning of the first full month of returns since the fund's inception.

**Beta (Mkt-RF)** refers to the sensitivity of each respective index to movements in the broad market.

**Size (SMB)** refers to small-minus-big and is the sensitivity or factor loading to small caps, with higher numbers indicating greater loading to small caps.

**Value (HML)** refers to high-minus-low and is the sensitivity or factor loading to value, specifically the book value-to-market value ratio, with higher meaning more loading toward value.

**Profitability (RMW)** refers to robust-minus-weak and is the sensitivity or factor loading to operating profitability.

**Investment (CMA)** premium associated with investing in companies that grow assets conservatively vs. those that grow them aggressively; a higher loading suggests a positive sensitivity with this premium, while a negative loading suggests the opposite.

**You cannot invest directly in an index. Past performance is not indicative of future results.**

Data chosen from latest available date.



Source: Bloomberg, WisdomTree.



# Appendix

# Composite Risk Score (CRS)

- + **The Composite Risk Score uses Quality and Momentum scores to identify the riskiest companies**
- + **This aims to remove or limit the impact of such companies in indexes**

<p><b>Quality*</b></p>  <p><b>50%</b></p>	<p><b>Static:</b></p> <ul style="list-style-type: none"><li>+ Last Return on Equity (ROE)</li><li>+ Last Return on Assets (ROA)</li><li>+ Last Gross Profits over Assets (GPOA)</li><li>+ Last Cash Flows over Assets (CFOA)</li></ul> <p><b>Dynamic:</b></p> <ul style="list-style-type: none"><li>+ ROE Trend</li><li>+ ROA Trend</li><li>+ GPOA Trend</li><li>+ CFOA Trend</li></ul>	<p><b>Better quality stocks have tended to outperform</b></p> <p>Selecting stocks based on the last but also trailing 3-year ROE and ROA readings rewards companies that currently have good but also improving quality attributes inside each of the industry groups.</p>
<p><b>Momentum</b></p>  <p><b>50%</b></p>	<ul style="list-style-type: none"><li>+ Average of Risk-adjusted total returns for the last 6m and last 12m</li><li>+ Risk-adjusted total returns = Historical Return divided by Volatility</li></ul>	<p><b>Momentum has tended to outperform</b></p> <p>6-month and 12-month returns help capture medium- to long-term price trends. Adjusting returns for volatility avoids tilting towards stocks with high return but also high volatility.</p>

\*Quality score is an equal weight of the 8 scores (6 data points (3 and 3) are needed per stocks to be included). Data is normalized with a cross sectorial Z Score in each industry groups. Trends are calculated as a 12 quarters historical Z Score in each industry groups.

# WisdomTree International Quality Dividend Growth Fund Top 10 Holdings



Data as of March 31, 2026

Top 10 Holdings	Sector	Weight
Toyota Motor Corp	Consumer Discretionary	5.25%
BP PLC	Energy	3.92%
LVMH Moet Hennessy Louis Vuitton SE	Consumer Discretionary	3.45%
Industria de Diseno Textil	Consumer Discretionary	3.32%
Deutsche Telekom AG	Communication Services	3.00%
Banco Bilbao Vizcaya Argentaria SA	Financials	2.92%
Astrazeneca Plc	Health Care	2.89%
GSK PLC	Health Care	2.25%
ING Groep NV	Financials	2.22%
L'Oreal SA	Consumer Staples	2.17%
<b>Total</b>		<b>31.41%</b>

Holdings and weights subject to change.  
Source: WisdomTree, FactSet.

# WisdomTree International Quality Dividend Growth Fund Characteristics



Data as of March 31, 2026

Characteristics	WisdomTree International Quality Dividend Growth Fund	MSCI EAFE Index
<b>Size</b>		
Weighted Average Market Cap (\$bn)	110.07	105.15
Median Market Cap (\$bn)	13.17	19.19
Over \$10 billion	91.72%	95.87%
\$2 billion - \$10 billion	8.28%	4.13%
Under \$2 billion	0.00%	0.00%
<b>Valuation &amp; Other Characteristics</b>		
Price/Earnings (Trailing)	17.03	17.59
Price/Book	2.61	2.20
Return on Equity	15.40%	12.17%
Dividend Yield	2.76%	2.75%
SEC 30-Day Yield	1.93%	N/A
Number of Holdings	262	690
<b>Risk (Since Inception*)</b>		
Standard Deviation	15.96%	15.01%
Sharpe Ratio	0.29	0.39
Information Ratio	-0.26	0.00
Up Capture	101.45%	100.00%
Down Capture	106.79%	100.00%
Alpha	-1.33%	0.00%
Beta	1.01	1.00

Source: WisdomTree, FactSet. \*Beginning first full month following inception on 04/07/2016  
**Past performance is not indicative of future results. You cannot invest directly in an index.**

# WisdomTree International Quality Dividend Growth Index Sector Attribution



1-Year as of March 31, 2026

Sector	Average Sector Weights			Total Return		Attribution Component			
	Index	Benchmark	+/-	Index	Benchmark	Allocation Effect	Selection Effect	Interaction Effect	Total Attribution
Information Technology	12.42%	8.43%	3.98%	26.57%	28.89%	1.47%	-0.22%	-0.03%	1.23%
Consumer Staples	4.80%	8.25%	-3.45%	10.46%	4.52%	0.62%	0.70%	-0.36%	0.95%
Communication Services	6.24%	4.83%	1.41%	18.06%	9.29%	-0.13%	0.47%	0.07%	0.41%
Energy	5.03%	3.30%	1.73%	55.67%	50.40%	-0.41%	0.19%	0.21%	-0.01%
Real Estate	0.22%	1.87%	-1.65%	22.76%	22.25%	-0.04%	0.03%	-0.06%	-0.07%
Utilities	0.70%	3.56%	-2.86%	66.07%	41.68%	-0.58%	0.75%	-0.61%	-0.43%
Financials	9.23%	23.80%	-14.57%	29.08%	27.45%	-0.90%	0.26%	-0.53%	-1.16%
Materials	6.48%	5.84%	0.65%	13.20%	31.51%	-0.21%	-1.11%	0.09%	-1.24%
Consumer Discretionary	19.46%	10.44%	9.02%	-1.68%	-3.90%	-3.24%	0.35%	0.69%	-2.19%
Industrials	22.98%	18.88%	4.10%	18.70%	29.63%	0.25%	-2.06%	-0.46%	-2.26%
Health Care	12.45%	10.79%	1.66%	-1.77%	11.51%	-0.61%	-1.73%	-0.10%	-2.44%
Other	-	0.01%	-0.01%	0.00%	1.69%	-0.01%	0.00%	0.00%	-0.01%
<b>Total</b>	-	-	-	<b>14.04%</b>	<b>21.27%</b>	<b>-3.78%</b>	<b>-2.35%</b>	<b>-1.09%</b>	<b>-7.22%</b>

**Past performance is not indicative of future results. You cannot invest directly in an index.** Subject to change.

Allocation refers to the portion of return which is attributable to a category's over weight vs. the benchmark. Stock selection refers to the portion of return which is attributable to the equities held vs the benchmark. Interaction refers to the portion of return attributable to the effects of how the selection and allocation effects interact with each other within the portfolio versus the same effects in the benchmark.

Source: FactSet, WisdomTree.

Index: WisdomTree International Quality Dividend Growth Index; Benchmark: MSCI EAFE Index

# WisdomTree International Quality Dividend Growth Index Sector Attribution



3-Year as of March 31, 2026

Sector	Average Sector Weights			Total Return		Attribution Component			
	Index	Benchmark	+/-	Index	Benchmark	Allocation Effect	Selection Effect	Interaction Effect	Total Attribution
Consumer Staples	8.89%	8.85%	0.04%	8.99%	0.47%	-0.07%	0.88%	-0.19%	0.61%
Energy	2.99%	3.86%	-0.87%	24.97%	21.46%	0.10%	0.14%	0.02%	0.27%
Information Technology	12.69%	8.52%	4.16%	13.03%	13.75%	0.31%	-0.08%	0.03%	0.26%
Real Estate	0.61%	2.11%	-1.50%	28.56%	9.75%	0.07%	0.46%	-0.30%	0.23%
Communication Services	4.62%	4.48%	0.14%	14.32%	11.50%	-0.02%	0.17%	0.04%	0.19%
Utilities	1.40%	3.39%	-1.99%	28.28%	19.03%	-0.19%	0.32%	-0.25%	-0.12%
Materials	6.86%	6.58%	0.28%	-0.53%	8.79%	-0.24%	-0.63%	-0.01%	-0.88%
Consumer Discretionary	19.74%	11.58%	8.16%	1.26%	0.19%	-1.43%	0.21%	0.29%	-0.93%
Health Care	16.69%	12.08%	4.61%	-0.48%	4.78%	-0.49%	-0.64%	-0.05%	-1.18%
Industrials	19.24%	17.42%	1.82%	12.79%	20.23%	0.13%	-1.27%	-0.21%	-1.34%
Financials	6.28%	21.09%	-14.81%	15.05%	27.59%	-2.11%	-2.30%	1.63%	-2.78%
Other	0.01%	0.05%	-0.04%	3.70%	-5.62%	0.01%	0.01%	0.00%	0.01%
<b>Total</b>	-	-	-	<b>7.94%</b>	<b>13.62%</b>	<b>-3.95%</b>	<b>-2.73%</b>	<b>1.00%</b>	<b>-5.68%</b>

**Past performance is not indicative of future results. You cannot invest directly in an index.** Subject to change.

Allocation refers to the portion of return which is attributable to a category's over weight vs. the benchmark. Stock selection refers to the portion of return which is attributable to the equities held vs the benchmark. Interaction refers to the portion of return attributable to the effects of how the selection and allocation effects interact with each other within the portfolio versus the same effects in the benchmark.

Source: FactSet, WisdomTree.

Index: WisdomTree International Quality Dividend Growth Index; Benchmark: MSCI EAFE Index

# WisdomTree International Quality Dividend Growth Index Sector Attribution



5-Year as of March 31, 2026

Sector	Average Sector Weights			Total Return		Attribution Component			
	Index	Benchmark	+/-	Index	Benchmark	Allocation Effect	Selection Effect	Interaction Effect	Total Attribution
Communication Services	3.84%	4.59%	-0.75%	7.53%	2.96%	0.06%	0.29%	0.01%	0.37%
Real Estate	0.80%	2.41%	-1.60%	-7.06%	0.89%	0.15%	-0.20%	0.27%	0.22%
Information Technology	12.38%	8.59%	3.79%	5.49%	7.16%	0.24%	-0.12%	-0.01%	0.10%
Consumer Staples	8.96%	9.50%	-0.54%	2.86%	1.04%	-0.09%	0.16%	-0.02%	0.04%
Energy	2.44%	3.95%	-1.51%	12.69%	20.14%	-0.06%	-0.23%	0.19%	-0.11%
Consumer Discretionary	18.37%	11.76%	6.61%	2.15%	-0.74%	-0.86%	0.48%	0.24%	-0.14%
Utilities	1.10%	3.41%	-2.31%	0.94%	10.43%	-0.10%	-0.22%	0.17%	-0.15%
Materials	10.91%	7.05%	3.86%	0.17%	5.16%	-0.16%	-0.31%	0.15%	-0.32%
Health Care	17.87%	12.41%	5.46%	2.43%	4.00%	-0.26%	-0.16%	0.09%	-0.33%
Industrials	18.13%	16.61%	1.52%	4.66%	10.80%	0.02%	-1.01%	-0.25%	-1.24%
Financials	5.19%	19.68%	-14.49%	1.64%	16.55%	-1.44%	-2.75%	2.16%	-2.04%
Other	0.01%	0.04%	-0.03%	-0.23%	-7.86%	0.01%	0.00%	0.00%	0.02%
<b>Total</b>	-	-	-	<b>4.33%</b>	<b>7.91%</b>	<b>-2.50%</b>	<b>-4.08%</b>	<b>2.99%</b>	<b>-3.58%</b>

**Past performance is not indicative of future results. You cannot invest directly in an index.** Subject to change.

Allocation refers to the portion of return which is attributable to a category's over weight vs. the benchmark. Stock selection refers to the portion of return which is attributable to the equities held vs the benchmark. Interaction refers to the portion of return attributable to the effects of how the selection and allocation effects interact with each other within the portfolio versus the same effects in the benchmark.

Source: FactSet, WisdomTree.

Index: WisdomTree International Quality Dividend Growth Index; Benchmark: MSCI EAFE Index

# WisdomTree International Quality Dividend Growth Index Sector Attribution



10-Year as of March 31, 2026

Sector	Average Sector Weights			Total Return		Attribution Component			
	Index	Benchmark	+/-	Index	Benchmark	Allocation Effect	Selection Effect	Interaction Effect	Total Attribution
Information Technology	12.13%	7.63%	4.50%	12.00%	12.34%	0.37%	0.02%	0.07%	0.45%
Communication Services	3.46%	4.71%	-1.26%	-1.64%	3.04%	0.16%	-0.17%	0.25%	0.23%
Real Estate	2.15%	2.99%	-0.84%	-0.45%	1.97%	0.07%	-0.01%	0.10%	0.16%
Energy	1.71%	4.42%	-2.71%	12.26%	11.61%	0.02%	0.10%	-0.07%	0.05%
Health Care	17.61%	12.05%	5.56%	6.69%	6.02%	-0.26%	0.10%	0.12%	-0.04%
Utilities	1.15%	3.50%	-2.36%	1.54%	9.59%	-0.06%	-0.11%	0.10%	-0.07%
Materials	9.00%	7.29%	1.70%	6.35%	10.41%	-0.05%	-0.26%	0.17%	-0.14%
Consumer Staples	11.44%	10.38%	1.06%	1.76%	2.97%	-0.02%	-0.17%	-0.02%	-0.21%
Consumer Discretionary	18.14%	11.83%	6.31%	4.81%	4.94%	-0.40%	0.04%	0.03%	-0.32%
Industrials	17.79%	15.53%	2.26%	8.76%	10.98%	0.03%	-0.33%	-0.11%	-0.42%
Financials	4.31%	19.43%	-15.12%	8.02%	11.45%	-0.52%	-0.52%	0.27%	-0.77%
Other	1.13%	0.22%	0.91%	-27.30%	-30.50%	0.05%	0.00%	-0.03%	0.02%
<b>Total</b>	-	-	-	<b>7.33%</b>	<b>8.38%</b>	<b>-0.61%</b>	<b>-1.33%</b>	<b>0.89%</b>	<b>-1.05%</b>

**Past performance is not indicative of future results. You cannot invest directly in an index.** Subject to change.

Allocation refers to the portion of return which is attributable to a category's over weight vs. the benchmark. Stock selection refers to the portion of return which is attributable to the equities held vs the benchmark. Interaction refers to the portion of return attributable to the effects of how the selection and allocation effects interact with each other within the portfolio versus the same effects in the benchmark.

Source: FactSet, WisdomTree.

Index: WisdomTree International Quality Dividend Growth Index; Benchmark: MSCI EAFE Index

# WisdomTree International Quality Dividend Growth Index Sector Attribution



Since Inception as of March 31, 2026

Sector	Average Sector Weights			Total Return		Attribution Component			
	Index	Benchmark	+/-	Index	Benchmark	Allocation Effect	Selection Effect	Interaction Effect	Total Attribution
Information Technology	11.02%	7.09%	3.94%	10.11%	9.89%	0.50%	0.07%	0.12%	0.69%
Communication Services	3.99%	4.76%	-0.76%	-0.62%	2.23%	0.24%	-0.14%	0.34%	0.44%
Real Estate	2.06%	3.05%	-0.99%	0.76%	1.51%	0.08%	0.09%	0.04%	0.20%
Energy	1.96%	4.72%	-2.76%	3.44%	6.00%	0.14%	-0.09%	0.16%	0.20%
Consumer Staples	12.72%	10.44%	2.27%	2.83%	3.16%	0.15%	-0.09%	0.06%	0.13%
Health Care	17.28%	11.95%	5.33%	6.11%	5.43%	-0.22%	0.16%	0.14%	0.08%
Utilities	1.13%	3.53%	-2.39%	0.66%	7.52%	-0.11%	-0.16%	0.18%	-0.08%
Consumer Discretionary	18.15%	11.93%	6.22%	3.45%	3.25%	-0.54%	0.12%	0.08%	-0.34%
Materials	8.97%	7.28%	1.69%	1.99%	6.25%	-0.10%	-0.47%	0.16%	-0.41%
Financials	3.89%	19.90%	-16.01%	8.66%	7.28%	-0.34%	0.92%	-1.15%	-0.56%
Industrials	17.41%	15.04%	2.37%	6.34%	8.43%	0.06%	-0.50%	-0.17%	-0.61%
Other	1.40%	0.31%	1.09%	-21.95%	-25.87%	0.09%	0.02%	0.02%	0.13%
<b>Total</b>	-	-	-	<b>5.96%</b>	<b>6.10%</b>	<b>-0.05%</b>	<b>-0.08%</b>	<b>-0.02%</b>	<b>-0.15%</b>

**Past performance is not indicative of future results. You cannot invest directly in an index.** Subject to change.

Allocation refers to the portion of return which is attributable to a category's over-weight vs. the benchmark. Stock selection refers to the portion of return which is attributable to the equities held vs the benchmark. Interaction refers to the portion of return attributable to the effects of how the selection and allocation effects interact with each other within the portfolio versus the same effects in the benchmark. Source: FactSet, WisdomTree.

Index: WisdomTree International Quality Dividend Growth Index; Benchmark: MSCI EAFE Index

Inception date for the WisdomTree International Quality Dividend Growth Index was 11/29/2013. Since inception performance begins on 11/29/2013, the first full month of Index performance.

# WisdomTree International Quality Dividend Growth Index Dividend Yield Attribution



10-Year as of March 31, 2026

Category	Average Category Weights			Total Return		Attribution Component			
	Index	Benchmark	+/-	Index	Benchmark	Allocation Effect	Selection Effect	Interaction Effect	Total Attribution
1st Quintile (Highest Div. Yield)	13.47%	20.13%	-6.66%	7.84%	11.18%	-0.02%	-0.84%	0.28%	-0.58%
2nd Quintile	16.21%	20.25%	-4.04%	3.61%	9.72%	-0.04%	-1.40%	0.40%	-1.04%
3rd Quintile	22.27%	20.01%	2.26%	9.11%	7.77%	0.03%	0.39%	-0.08%	0.34%
4th Quintile	26.75%	17.85%	8.90%	5.96%	7.60%	0.04%	-0.31%	-0.13%	-0.40%
5th Quintile (Lowest Div. Yield)	19.85%	18.05%	1.81%	8.94%	7.27%	0.23%	0.32%	-0.01%	0.54%
Zero Div. Yield	0.32%	3.48%	-3.16%	-14.57%	6.25%	0.09%	-0.62%	0.60%	0.07%
N/A	1.13%	0.22%	0.91%	-27.30%	-29.09%	0.06%	0.00%	-0.03%	0.02%
<b>Total</b>	-	-	-	<b>7.33%</b>	<b>8.38%</b>	<b>0.40%</b>	<b>-2.48%</b>	<b>1.03%</b>	<b>-1.05%</b>

**Past performance is not indicative of future results. You cannot invest directly in an index.** Subject to change.

Allocation refers to the portion of return which is attributable to a category's over weight vs. the benchmark. Stock selection refers to the portion of return which is attributable to the equities held vs the benchmark. Interaction refers to the portion of return attributable to the effects of how the selection and allocation effects interact with each other within the portfolio versus the same effects in the benchmark.

Source: FactSet, WisdomTree.

Index: WisdomTree International Quality Dividend Growth Index; Benchmark: MSCI EAFE Index

# WisdomTree International Quality Dividend Growth Index Return on Equity (ROE) Attribution



10-Year as of March 31, 2026

Category	Average Category Weights			Total Return		Attribution Component			
	Index	Benchmark	+/-	Index	Benchmark	Allocation Effect	Selection Effect	Interaction Effect	Total Attribution
1st Quintile (Highest ROE)	64.83%	26.14%	38.69%	7.51%	7.34%	-0.23%	0.07%	0.18%	0.02%
2nd Quintile	18.48%	21.09%	-2.60%	5.53%	9.74%	-0.05%	-0.83%	0.19%	-0.69%
3rd Quintile	8.90%	18.92%	-10.02%	4.14%	7.93%	0.09%	-0.69%	0.37%	-0.23%
4th Quintile	3.80%	16.62%	-12.82%	7.24%	8.97%	-0.01%	-0.16%	0.00%	-0.16%
5th Quintile (Lowest ROE)	2.14%	12.35%	-10.21%	11.38%	8.20%	-0.02%	0.66%	-0.55%	0.10%
Negative Return	0.33%	3.88%	-3.55%	3.99%	7.46%	0.02%	0.23%	-0.27%	-0.01%
N/A	1.52%	1.00%	0.52%	3.79%	9.34%	0.02%	0.00%	-0.08%	-0.06%
<b>Total</b>	-	-	-	<b>7.33%</b>	<b>8.38%</b>	<b>-0.17%</b>	<b>-0.71%</b>	<b>-0.17%</b>	<b>-1.05%</b>

**Past performance is not indicative of future results. You cannot invest directly in an index.** Subject to change.

Allocation refers to the portion of return which is attributable to a category's over weight vs. the benchmark. Stock selection refers to the portion of return which is attributable to the equities held vs the benchmark. Interaction refers to the portion of return attributable to the effects of how the selection and allocation effects interact with each other within the portfolio versus the same effects in the benchmark.

Source: FactSet, WisdomTree.

Index: WisdomTree International Quality Dividend Growth Index; Benchmark: MSCI EAFE Index

# Important Information



Please see the [WisdomTree Glossary](#) for definitions of terms and indexes.

**This information must be preceded or accompanied by a prospectus. Investors should carefully consider the investment objectives, risks, charges and expenses of the Funds before investing. This and other information can be obtained in the Fund's prospectus or, if available, the summary prospectus by visiting [wisdomtree.com/investments](http://wisdomtree.com/investments). Read the prospectus or, if available, the summary prospectus carefully before you invest.**

There are risks associated with investing, including possible loss of principal. Foreign investing involves special risks, such as risk of loss from currency fluctuation or political or economic uncertainty. Growth stocks, as a group, may be out of favor with the market and underperform value stocks or the overall equity market. Growth stocks are generally more sensitive to market movements than other types of stocks. Due to the investment strategy of this Fund, it may make higher capital gain distributions than other ETFs. Dividends are not guaranteed, and a company currently paying dividends may cease paying dividends at any time. The Fund invests in the securities included in, or representative of, its Index. The Index may not perform as intended. Please read the Fund's prospectus for specific details regarding the Fund's risk profile.

Dividends are not guaranteed, and a company currently paying dividends may cease paying dividends at any time.

**MSCI:** Neither MSCI nor any other party involved in or related to compiling, computing or creating the MSCI data makes any express or implied warranties or representations with respect to such data (or the results to be obtained by the use thereof), and all such parties hereby expressly disclaim all warranties of originality, accuracy, completeness, merchantability or fitness for a particular purpose with respect to any such data. Without limiting any of the foregoing, in no event shall MSCI, any of its affiliates or any third party involved in or related to compiling, computing or creating the data have any liability for any direct, indirect, special, punitive, consequential or any other damages (including lost profits), even if notified of the possibility of such.

References to specific securities and their issuers are for illustrative purposes only and are not intended to be, and should not be interpreted as, recommendations to purchase or sell such securities.

Additional index information is available at [wisdomtree.com/investments](http://wisdomtree.com/investments).

# Important Information



The Global Industry Classification Standard (“GICS”) was developed by and is the exclusive property and a service mark of MSCI Inc. (“MSCI”) and Standard & Poor’s (“S&P”), a division of The McGraw-Hill Companies, Inc., and is licensed for use by WisdomTree, Inc. Neither MSCI, S&P nor any other party involved in making or compiling the GICS or any GICS classifications makes any express or implied warranties or representations with respect to such standard or classification (or the results to be obtained by the use thereof), and all such parties hereby expressly disclaim all warranties of originality, accuracy, completeness, merchantability and fitness for a particular purpose with respect to any such standard or classification. Without limiting any of the foregoing, in no event shall MSCI, S&P, any of their affiliates or any third party involved in making or compiling the GICS or any GICS classifications have any liability for any direct, indirect, special, punitive, consequential or any other damages (including lost profits), even if notified of the possibility of such damages.

WisdomTree Funds are distributed by Foreside Fund Services, LLC.