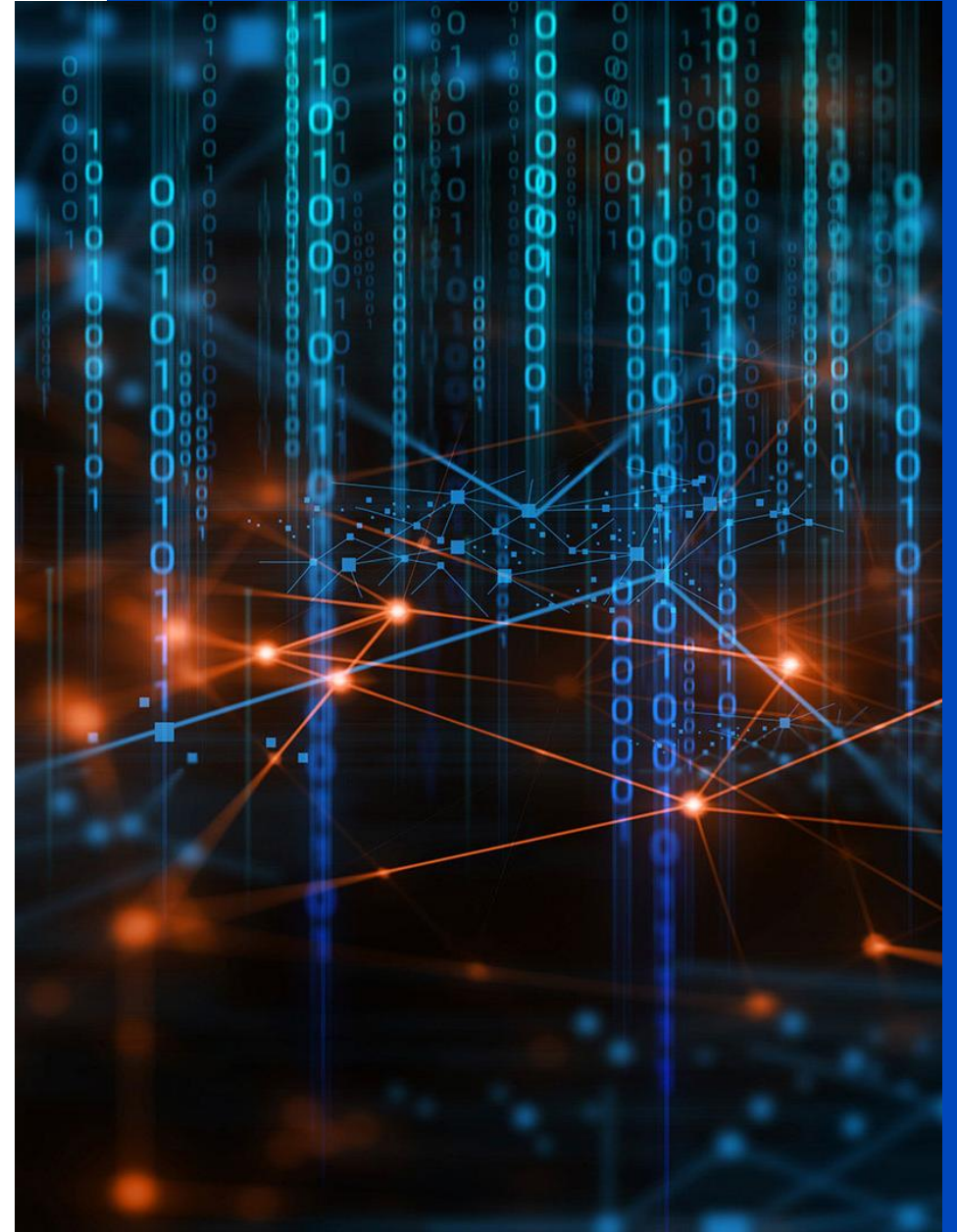




Q1-2026

WisdomTree International SmallCap Dividend Fund (DLS)



WisdomTree Company Overview



+ **Who We Are**

WisdomTree is a global financial innovator, empowering investors to shape their future and supporting financial professionals to better serve their clients and grow their businesses.

+ **WisdomTree Solutions**

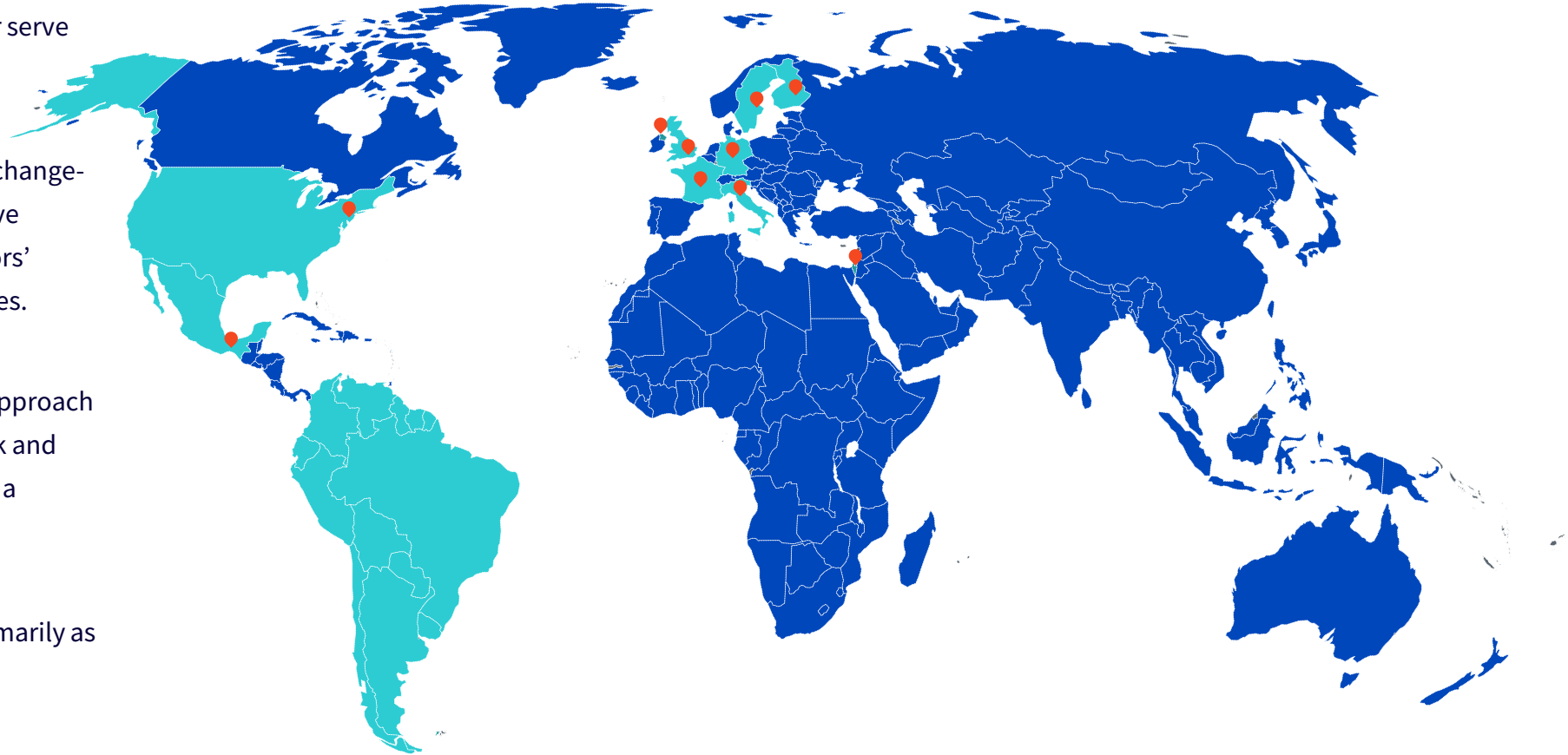
WisdomTree manages \$150.6 billion* in exchange-traded products globally, through innovative solutions that are designed to meet investors' needs across asset classes and market cycles.

+ **Investment Philosophy & Approach**

Our belief that a fundamentally weighted approach can produce attractive returns with less risk and expense than active management made us a pioneer in factor-based investing.

+ **What We Can Deliver**

Our investment strategies are available primarily as ETFs which can provide intra-day liquidity, transparency, and tax efficiency.

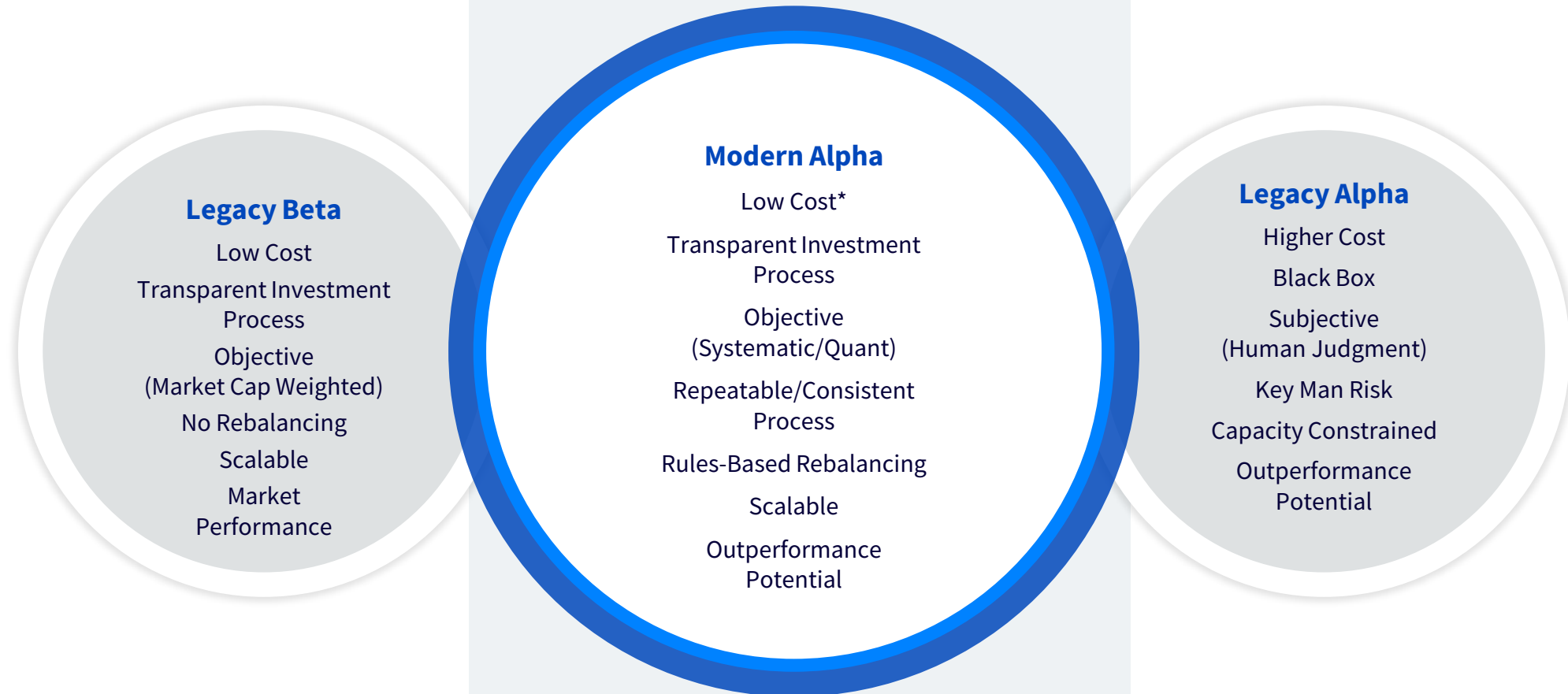


*As of March 31, 2026

WisdomTree Modern Alpha®



Modern Alpha combines the outperformance potential of active with the benefits of passive— to offer investors strategies that are built to perform.



* Ordinary brokerage commissions apply.

WisdomTree Research Team

Globally integrated research team
focused on all major asset classes
including equities, fixed income,
commodities, and alternatives.



Professor Jeremy Siegel, PhD

Senior Economist to WisdomTree
and Emeritus Professor of Finance,
The Wharton School of the
University of Pennsylvania



Jeremy Schwartz, CFA

Global CIO



Christopher Gannatti, CFA

Global Head of Research



Kevin Flanagan

Head of Investment and Fixed
Income Strategy



Jeff Weniger, CFA

Head of Equity Strategy



Rick Harper

CIO, Fixed Income &
Model Portfolios



Alejandro Saltiel, CFA

Head of Indexes, U.S.



Matt Wagner, CFA

Director, Research



Liqian Ren

Director of Modern Alpha

\$150.6B*

EXCHANGE-TRADED PRODUCTS
GLOBALLY

30+

PROFESSIONALS ON GLOBAL
RESEARCH TEAM

15+

PHD, CFA, & CIMA® DESIGNATIONS

*As of March 31, 2026



WisdomTree International SmallCap Dividend Fund (DLS)

Our Philosophy

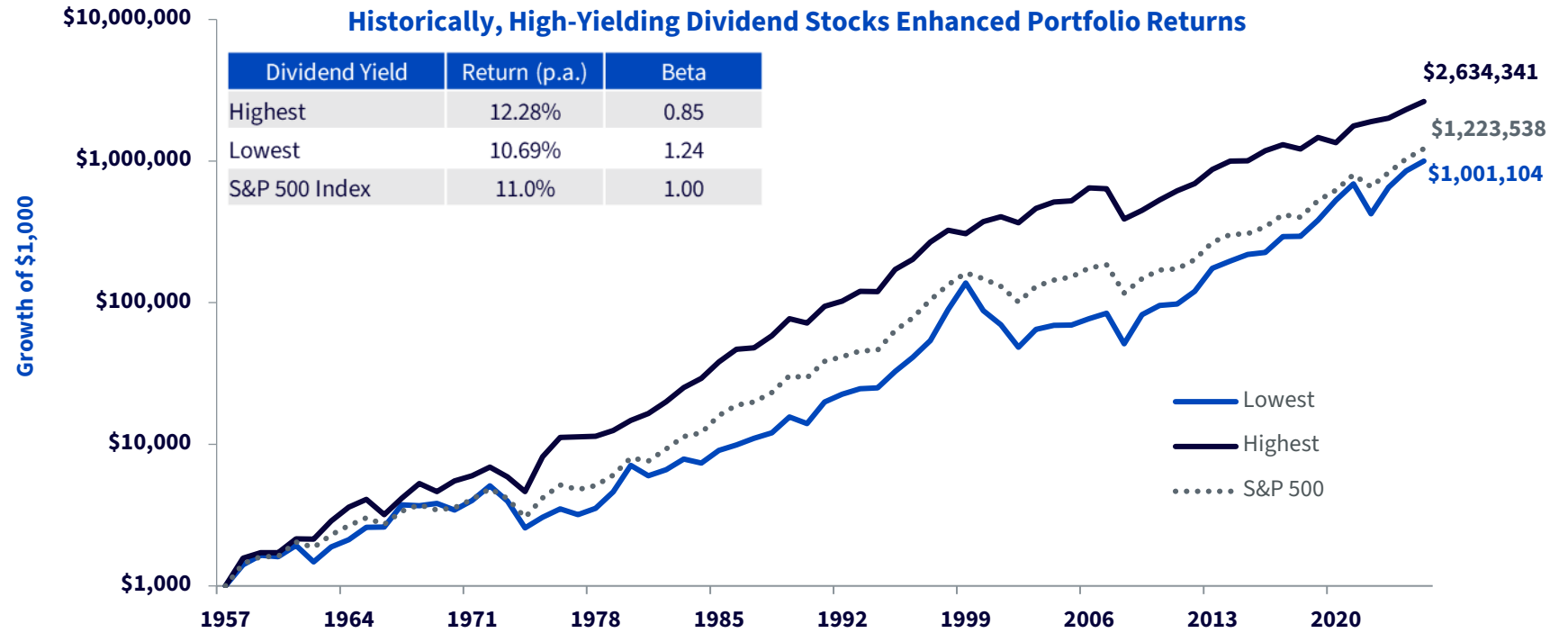


- ▶ Pricing Errors & Return Premiums Exist
- ▶ Fundamentals Matter
- ▶ The Concept of Relative Value is Important

Why Dividends for Value?

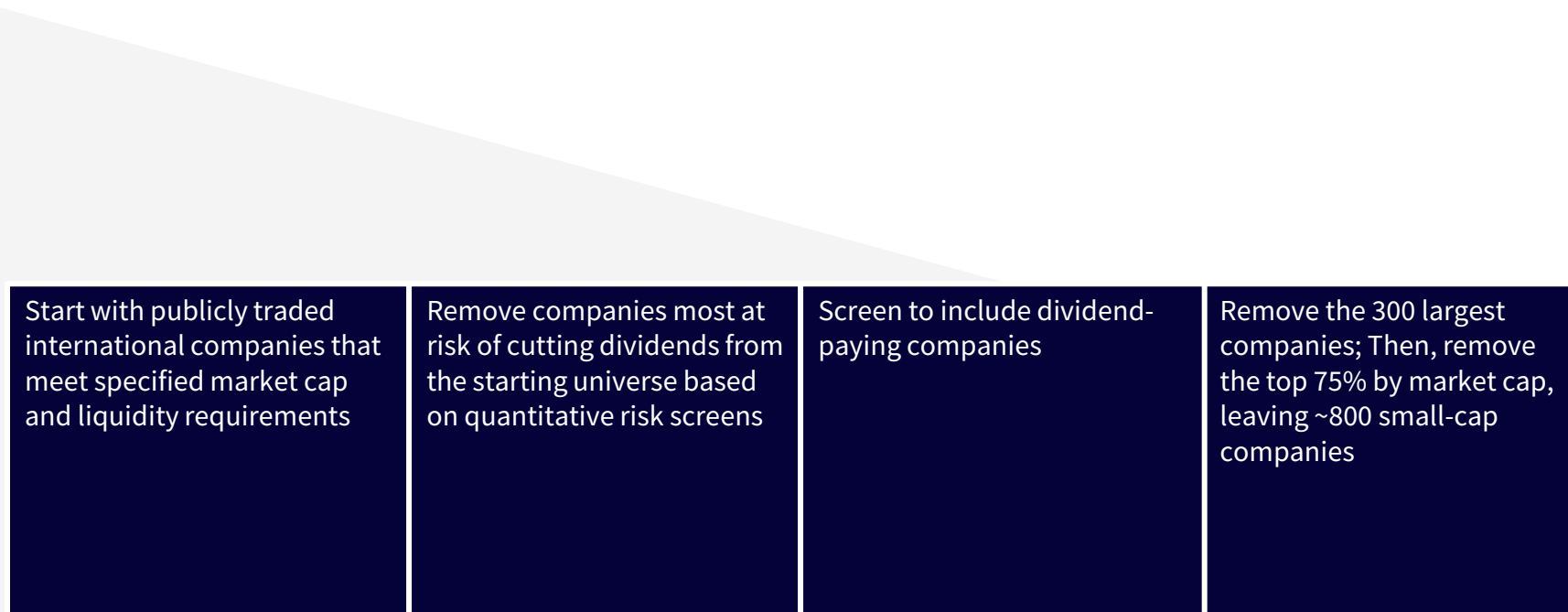


- + Dividends have provided the majority of the stock market's real return over time
- + Dividends can help mitigate downside risk during market bubbles
- + Dividends are an unambiguous objective measure, cannot be restated and can be applied globally



Source: Professor Jeremy Siegel, *The Future for Investors* (2005), source updated for 2025 data. Uses the S&P 500 universe as of 12/31/25. Average annual total returns, 1957–2025. Each stock in S&P 500 is ranked from highest to lowest by dividend yield on December 31 of every year and placed into “quintiles,” baskets of stocks, with 100 stocks in each basket. The stocks in the quintiles are weighted by their market capitalization. Top and bottom quintiles are shown for simplicity. The dividend yield is defined as each stock's annual dividends per share divided by its stock price as of December 31 of that year. p.a.=per annum. **Past performance is not indicative of future results. You cannot invest directly in an index. Index performance does not represent actual fund or portfolio performance. A fund or portfolio may differ significantly from the securities included in the index. Index performance assumes reinvestment of dividends but does not reflect any management fees, transaction costs or other expenses that would be incurred by a portfolio or fund, or brokerage commissions on transactions in fund shares. Such fees, expenses and commissions could reduce returns.**

Investment Process: International Small Cap Dividends



The following constraints are applied:

Sectors: 25% weight constraint for all sectors, except for Real Estate, which is constrained at 15% of total weight.

Countries: 25% constraint applied to all countries

WisdomTree International SmallCap Dividend Fund Performance



Data as of March 31, 2026

Name	Cumulative Returns		Average Annual Total Returns as of March 31, 2026				
	QTD	YTD	1-Year	3-Year	5-Year	10-Year	Since Inception
WisdomTree International SmallCap Dividend Fund (NAV)	-0.64%	-0.64%	26.86%	14.37%	6.60%	7.08%	6.11%
WisdomTree International SmallCap Dividend Fund (Market Price)	0.94%	0.94%	28.34%	14.76%	6.87%	7.23%	6.15%
MSCI EAFE Small Cap Index	-1.25%	-1.25%	25.55%	12.65%	4.43%	7.42%	5.85%
Excess Return (NAV)	0.62%	0.62%	1.31%	1.71%	2.17%	-0.34%	0.26%

Name	Calendar Year Returns									
	2025	2024	2023	2022	2021	2020	2019	2018	2017	2016
WisdomTree International SmallCap Dividend Fund (NAV)	33.49%	3.24%	15.40%	-17.36%	11.66%	-1.23%	22.11%	-18.69%	30.95%	7.00%
MSCI EAFE Small Cap Index	31.83%	1.82%	13.16%	-21.39%	10.10%	12.34%	24.96%	-17.89%	33.01%	2.18%
Excess Return (NAV)	1.66%	1.42%	2.23%	4.03%	1.56%	-13.57%	-2.85%	-0.80%	-2.06%	4.82%

Fund Details				
Name	Ticker	Inception Date	Gross Expense Ratio	Net Expense Ratio
WisdomTree International SmallCap Dividend Fund	DLS	06/16/2006	0.58%	0.58%

Performance is historical and does not guarantee future results. Current performance may be lower or higher than quoted. Investment returns and principal value of an investment will fluctuate so that an investor's shares, when redeemed, may be worth more or less than their original cost. Performance data for the most recent month-end is available at wisdomtree.com/investments. WisdomTree shares are bought and sold at market price (not NAV) and are not individually redeemed from the Fund. Total Returns are calculated using the daily 4:00 p.m. EST net asset value (NAV). Market price returns reflect the midpoint of the bid/ask spread as of the close of trading on the exchange where Fund shares are listed. Market price returns do not represent the returns you would receive if you traded shares at other times. You cannot invest directly in an index.

Sources: WisdomTree, FactSet.

WisdomTree International SmallCap Dividend Fund Performance



Data as of March 31, 2026

Name	Cumulative Returns		Average Annual Total Returns as of March 31, 2026				
	QTD	YTD	1-Year	3-Year	5-Year	10-Year	Since Inception
WisdomTree International SmallCap Dividend Fund (NAV)	-0.64%	-0.64%	26.86%	14.37%	6.60%	7.08%	6.11%
WisdomTree International SmallCap Dividend Fund (Market Price)	0.94%	0.94%	28.34%	14.76%	6.87%	7.23%	6.15%
MSCI EAFE Index	-1.24%	-1.24%	21.27%	13.62%	7.91%	8.38%	5.31%
Excess Return (NAV)	0.60%	0.60%	5.59%	0.75%	-1.31%	-1.30%	0.80%

Name	Calendar Year Returns									
	2025	2024	2023	2022	2021	2020	2019	2018	2017	2016
WisdomTree International SmallCap Dividend Fund (NAV)	33.49%	3.24%	15.40%	-17.36%	11.66%	-1.23%	22.11%	-18.69%	30.95%	7.00%
MSCI EAFE Index	31.22%	3.82%	18.24%	-14.45%	11.26%	7.82%	22.01%	-13.79%	25.03%	1.00%
Excess Return (NAV)	2.27%	-0.58%	-2.84%	-2.91%	0.40%	-9.05%	0.10%	-4.90%	5.92%	6.00%

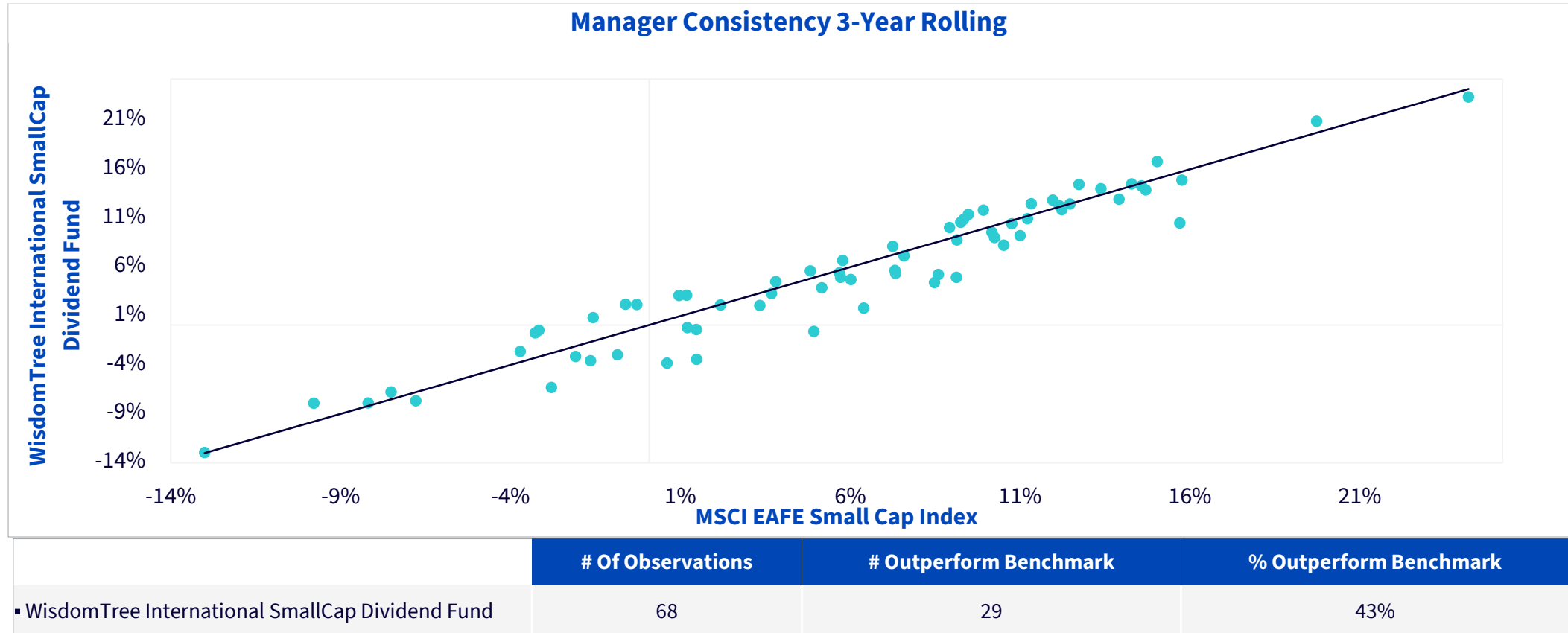
Fund Details				
Name	Ticker	Inception Date	Gross Expense Ratio	Net Expense Ratio
WisdomTree International SmallCap Dividend Fund	DLS	06/16/2006	0.58%	0.58%

Performance is historical and does not guarantee future results. Current performance may be lower or higher than quoted. Investment returns and principal value of an investment will fluctuate so that an investor's shares, when redeemed, may be worth more or less than their original cost. Performance data for the most recent month-end is available at wisdomtree.com/investments. WisdomTree shares are bought and sold at market price (not NAV) and are not individually redeemed from the Fund. Total Returns are calculated using the daily 4:00 p.m. EST net asset value (NAV). Market price returns reflect the midpoint of the bid/ask spread as of the close of trading on the exchange where Fund shares are listed. Market price returns do not represent the returns you would receive if you traded shares at other times. You cannot invest directly in an index.
Sources: WisdomTree, FactSet.

WisdomTree International SmallCap Dividend Fund Manager Consistency



Data as of March 31, 2026



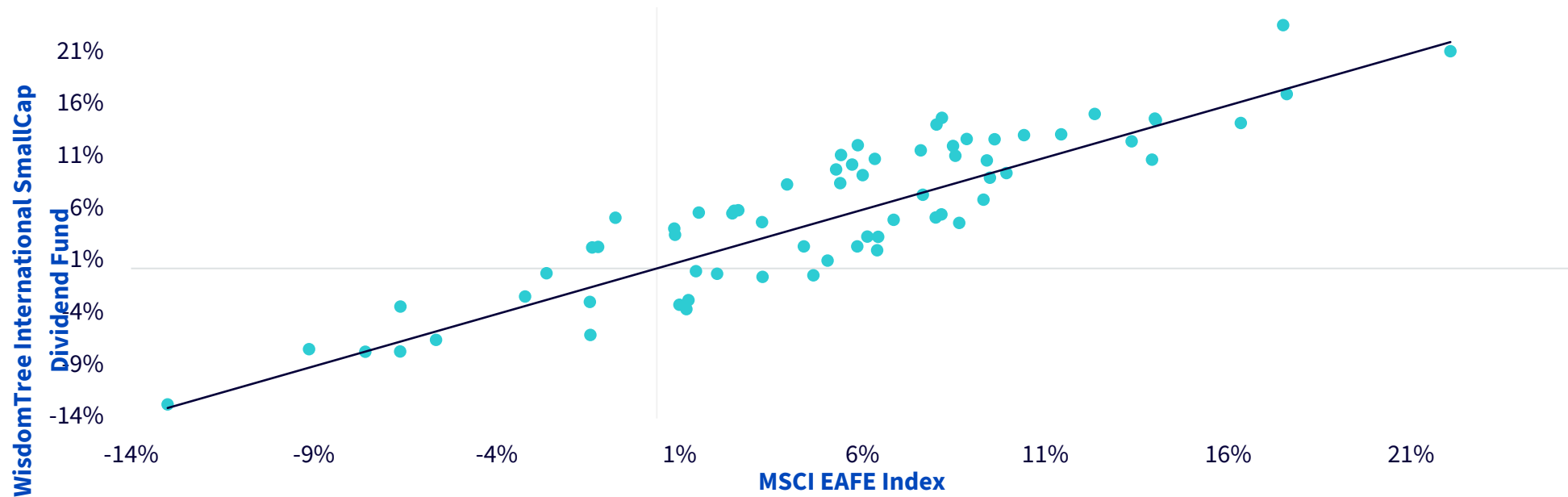
Source: WisdomTree. Dots represent trailing 3-year rolling returns of the WisdomTree International SmallCap Dividend Fund and the MSCI EAFE Small Cap Index using quarterly observations. Inception date for the fund was 06/16/2006. Returns for the fund based on net asset value. Returns for the benchmark index based on total returns. **Past performance is not indicative of future results. You cannot invest directly in an index.**

WisdomTree International SmallCap Dividend Fund Manager Consistency



Data as of March 31, 2026

Manager Consistency 3-Year Rolling



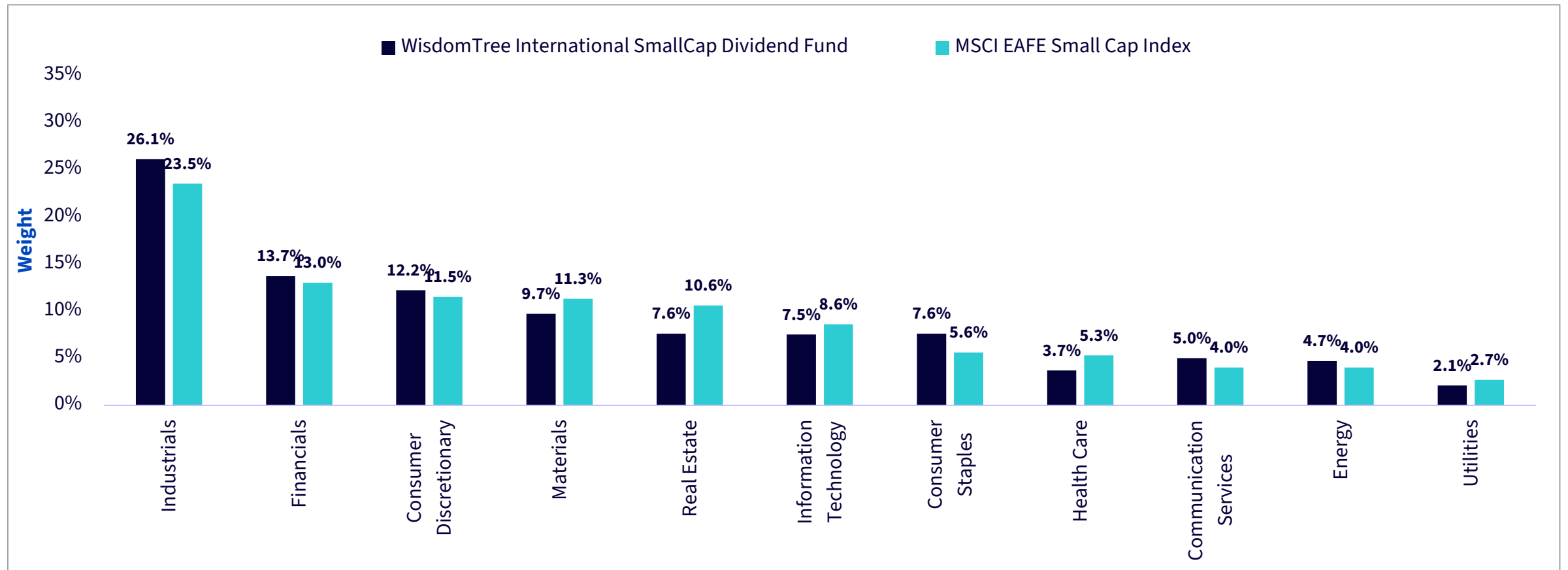
	# Of Observations	# Outperform Benchmark	% Outperform Benchmark
▪ WisdomTree International SmallCap Dividend Fund	68	37	54%

Source: WisdomTree. Dots represent trailing 3-year rolling returns of the WisdomTree International SmallCap Dividend Fund and the MSCI EAFE Index using quarterly observations. Inception date for the fund was 06/16/2006. Returns for the fund based on net asset value. Returns for the benchmark index based on total returns. **Past performance is not indicative of future results. You cannot invest directly in an index.**

WisdomTree International SmallCap Dividend Fund Sector Weights



Data as of March 31, 2026



Source: WisdomTree and FactSet.
Sector weights are subject to change. You cannot invest directly in an index.

WisdomTree International SmallCap Dividend Fund Country Weights



Data as of March 31, 2026

Country	WisdomTree International SmallCap Dividend Fund	MSCI EAFE Small Cap Index	Over/Under Weight
Japan	27.41%	36.58%	-9.17%
United Kingdom	13.91%	12.02%	1.89%
Australia	9.24%	10.56%	-1.32%
Sweden	6.99%	4.73%	2.26%
Norway	6.92%	2.42%	4.50%
Israel	5.59%	4.90%	0.68%
Singapore	5.55%	2.31%	3.23%
Hong Kong	3.65%	1.79%	1.85%
France	3.34%	3.74%	-0.39%
Italy	2.77%	2.82%	-0.06%
Other	14.64%	18.11%	-3.47%
Total	100%	100%	0%

Holdings and weights subject to change.
Source: WisdomTree, FactSet.

WisdomTree International SmallCap Dividend Fund Characteristics



Data as of March 31, 2026

Characteristics	WisdomTree International SmallCap Dividend Fund	MSCI EAFE Small Cap Index
Size		
Weighted Average Market Cap (\$bn)	1.84	3.97
Median Market Cap (\$bn)	1.16	1.69
Over \$10 billion	0.00%	3.03%
\$2 billion - \$10 billion	43.03%	71.26%
Under \$2 billion	56.97%	25.71%
Valuation & Other Characteristics		
Price/Earnings (Trailing)	14.13	18.07
Price/Book	1.37	1.49
Return on Equity	9.41%	8.25%
Dividend Yield	4.08%	2.85%
SEC 30-Day Yield	2.75%	N/A
Number of Holdings	1017	2031
Risk (Since Inception*)		
Standard Deviation	17.67%	18.37%
Sharpe Ratio	0.24	0.22
Information Ratio	0.08	0.00
Up Capture	95.50%	100.00%
Down Capture	95.51%	100.00%
Alpha	0.46%	0.00%
Beta	0.95	1.00

Source: WisdomTree, FactSet. *Beginning first full month following inception on 06/16/2006
Past performance is not indicative of future results. You cannot invest directly in an index.

WisdomTree International SmallCap Dividend Fund Factor Breakdown



Factor Calculation for July 31, 2006 to February 28, 2026

Name	Mkt-RF (Beta)	SMB (Size)	HML (Value)	RMW (Quality)	CMA (Investment)
WisdomTree International SmallCap Dividend Fund	1.04	0.64	0.25	0.29	0.02
MSCI EAFE Small Cap Index	1.08	0.62	0.04	0.12	-0.06

July 31, 2006 represents the beginning of the first full month of returns since the fund's inception.

Beta (Mkt-RF) refers to the sensitivity of each respective index to movements in the broad market.

Size (SMB) refers to small-minus-big and is the sensitivity or factor loading to small caps, with higher numbers indicating greater loading to small caps.

Value (HML) refers to high-minus-low and is the sensitivity or factor loading to value, specifically the book value-to-market value ratio, with higher meaning more loading toward value.

Profitability (RMW) refers to robust-minus-weak and is the sensitivity or factor loading to operating profitability.

Investment (CMA) premium associated with investing in companies that grow assets conservatively vs. those that grow them aggressively; a higher loading suggests a positive sensitivity with this premium, while a negative loading suggests the opposite.

You cannot invest directly in an index. Past performance is not indicative of future results.

Data chosen from latest available date.



Source: Bloomberg, WisdomTree.



Appendix

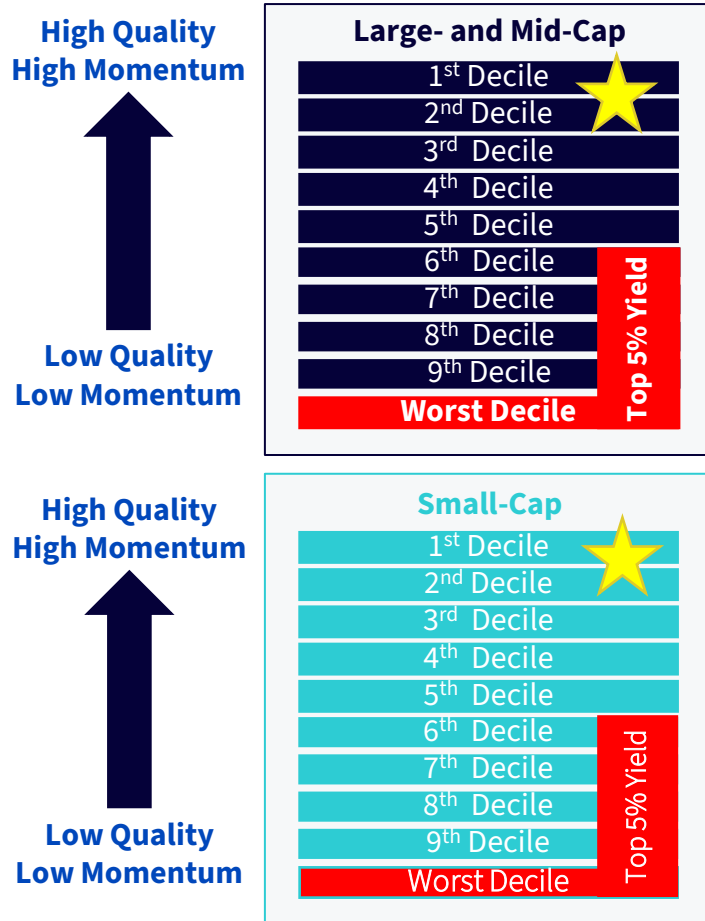
Composite Risk Score (CRS)

- + **The Composite Risk Score uses Quality and Momentum scores to identify the riskiest companies**
- + **This aims to remove or limit the impact of such companies in indexes**

<p>Quality*</p>  <p>50%</p>	<p>Static:</p> <ul style="list-style-type: none">+ Last Return on Equity (ROE)+ Last Return on Assets (ROA)+ Last Gross Profits over Assets (GPOA)+ Last Cash Flows over Assets (CFOA) <p>Dynamic:</p> <ul style="list-style-type: none">+ ROE Trend+ ROA Trend+ GPOA Trend+ CFOA Trend	<p>Better quality stocks have tended to outperform</p> <p>Selecting stocks based on the last but also trailing 3-year ROE and ROA readings rewards companies that currently have good but also improving quality attributes inside each of the industry groups.</p>
<p>Momentum</p>  <p>50%</p>	<ul style="list-style-type: none">+ Average of Risk-adjusted total returns for the last 6m and last 12m+ Risk-adjusted total returns = Historical Return divided by Volatility	<p>Momentum has tended to outperform</p> <p>6-month and 12-month returns help capture medium- to long-term price trends. Adjusting returns for volatility avoids tilting towards stocks with high return but also high volatility.</p>

*Quality score is an equal weight of the 8 scores (6 data points (3 and 3) are needed per stocks to be included). Data is normalized with a cross sectorial Z Score in each industry groups. Trends are calculated as a 12 quarters historical Z Score in each industry groups.

The Composite Risk Score: Filtering Out the Riskiest Dividend Payers and Rewarding Higher Quality Companies



- + The Composite Risk Score (CRS) is used to **create a list of riskier stocks**
- + All stocks (dividend payers or not) are ranked across 6 distinct universes → 3 regions (US, Developed International, and Emerging Markets) separated between large-/mid-cap and small-caps
- + In each universe:
 - + The stocks in the **bottom 10% of stocks ranked by CRS** are excluded
 - + The stocks in the **Top 5% by dividend yield and bottom half by CRS** are also excluded
- + CRS is also used to **create a list of “Good Stocks”, which is the 2 top deciles**
 - + In all strategies (except Quality Dividend Growth), **the good stocks are overweighted, the \$ dividend stream of those stocks is increased by 50%** to increase their weight

WisdomTree International SmallCap Dividend Fund Top 10 Holdings



Data as of March 31, 2026

Top 10 Holdings	Sector	Weight
HAFNIA LTD	Energy	0.79%
HOEGH AUTOLINERS ASA	Industrials	0.73%
Elecnor SA	Industrials	0.65%
Dof Group Asa	Energy	0.60%
Plus500 Ltd	Financials	0.57%
ODFJELL DRILLING LTD	Energy	0.51%
MAN GROUP PLC/JERSEY	Financials	0.49%
FIBI HOLDINGS	Financials	0.46%
First Resources Ltd	Consumer Staples	0.42%
Proximus SA	Communication Services	0.41%
Total		5.23%

Holdings and weights subject to change.
Source: WisdomTree, FactSet.

WisdomTree International SmallCap Dividend Fund Characteristics



Data as of March 31, 2026

Characteristics	WisdomTree International SmallCap Dividend Fund	MSCI EAFE Small Cap Index
Size		
Weighted Average Market Cap (\$bn)	1.84	3.97
Median Market Cap (\$bn)	1.16	1.69
Over \$10 billion	0.00%	3.03%
\$2 billion - \$10 billion	43.03%	71.26%
Under \$2 billion	56.97%	25.71%
Valuation & Other Characteristics		
Price/Earnings (Trailing)	14.13	18.07
Price/Book	1.37	1.49
Return on Equity	9.41%	8.25%
Dividend Yield	4.08%	2.85%
SEC 30-Day Yield	2.75%	N/A
Number of Holdings	1017	2031
Risk (Since Inception*)		
Standard Deviation	17.67%	18.37%
Sharpe Ratio	0.24	0.22
Information Ratio	0.08	0.00
Up Capture	95.50%	100.00%
Down Capture	95.51%	100.00%
Alpha	0.46%	0.00%
Beta	0.95	1.00

Source: WisdomTree, FactSet. *Beginning first full month following inception on 06/16/2006
Past performance is not indicative of future results. You cannot invest directly in an index.

WisdomTree International SmallCap Dividend Index Sector Attribution



1-Year as of March 31, 2026

Sector	Average Sector Weights			Total Return		Attribution Component			Total Attribution
	Index	Benchmark	+/-	Index	Benchmark	Allocation Effect	Selection Effect	Interaction Effect	
Financials	14.15%	12.71%	1.45%	45.90%	35.78%	0.08%	0.81%	0.06%	0.95%
Real Estate	7.04%	11.14%	-4.10%	23.36%	13.45%	0.34%	0.91%	-0.38%	0.86%
Industrials	25.57%	23.35%	2.21%	34.41%	29.76%	0.08%	0.70%	0.05%	0.84%
Consumer Staples	7.64%	5.42%	2.22%	28.60%	8.15%	-0.34%	0.81%	0.33%	0.81%
Health Care	3.80%	5.64%	-1.84%	9.25%	5.00%	0.30%	0.20%	-0.07%	0.43%
Consumer Discretionary	13.63%	12.49%	1.14%	12.28%	8.60%	-0.14%	0.36%	0.01%	0.24%
Energy	3.56%	2.94%	0.62%	61.10%	72.76%	0.22%	-0.18%	-0.05%	-0.01%
Communication Services	4.64%	4.34%	0.30%	6.23%	5.37%	-0.07%	0.00%	0.05%	-0.02%
Information Technology	7.83%	9.14%	-1.31%	26.81%	31.28%	-0.01%	-0.28%	0.01%	-0.28%
Utilities	2.06%	2.44%	-0.38%	30.42%	62.10%	-0.10%	-0.47%	0.06%	-0.50%
Materials	10.02%	10.27%	-0.25%	27.79%	49.55%	-0.03%	-1.46%	0.02%	-1.47%
Other	0.05%	0.13%	-0.07%	-8.25%	16.01%	-0.01%	-0.02%	0.02%	0.00%
Total	-	-	-	27.40%	25.55%	0.33%	1.41%	0.11%	1.85%

Past performance is not indicative of future results. You cannot invest directly in an index. Subject to change.

Allocation refers to the portion of return which is attributable to a category's over weight vs. the benchmark. Stock selection refers to the portion of return which is attributable to the equities held vs the benchmark. Interaction refers to the portion of return attributable to the effects of how the selection and allocation effects interact with each other within the portfolio versus the same effects in the benchmark.

Source: FactSet, WisdomTree.

Index: WisdomTree International SmallCap Dividend Index; Benchmark: MSCI EAFE Small Cap Index

WisdomTree International SmallCap Dividend Index Sector Attribution



3-Year as of March 31, 2026

Sector	Average Sector Weights			Total Return		Attribution Component			
	Index	Benchmark	+/-	Index	Benchmark	Allocation Effect	Selection Effect	Interaction Effect	Total Attribution
Industrials	25.61%	23.31%	2.30%	17.90%	14.43%	0.07%	0.68%	0.03%	0.78%
Financials	13.89%	12.32%	1.57%	33.15%	27.99%	0.20%	0.52%	0.04%	0.76%
Consumer Staples	6.70%	6.02%	0.68%	12.60%	5.60%	-0.15%	0.35%	0.18%	0.38%
Real Estate	7.94%	10.66%	-2.73%	7.63%	5.48%	0.19%	0.32%	-0.19%	0.32%
Health Care	3.64%	5.96%	-2.32%	6.29%	2.72%	0.19%	0.18%	-0.05%	0.32%
Consumer Discretionary	13.32%	12.75%	0.58%	7.35%	5.57%	-0.05%	0.23%	0.01%	0.19%
Information Technology	7.59%	9.39%	-1.80%	12.10%	10.00%	0.07%	0.14%	-0.04%	0.18%
Energy	3.39%	3.00%	0.39%	19.88%	23.01%	0.06%	-0.07%	0.01%	-0.01%
Communication Services	4.50%	4.12%	0.38%	4.39%	6.29%	-0.02%	-0.08%	-0.01%	-0.11%
Utilities	2.50%	2.51%	-0.01%	15.43%	25.66%	-0.02%	-0.23%	0.04%	-0.21%
Materials	10.64%	9.72%	0.92%	11.25%	16.83%	-0.06%	-0.55%	0.07%	-0.54%
Other	0.27%	0.24%	0.04%	10.99%	11.47%	0.03%	0.04%	0.01%	0.07%
Total	-	-	-	14.77%	12.65%	0.49%	1.53%	0.10%	2.12%

Past performance is not indicative of future results. You cannot invest directly in an index. Subject to change.

Allocation refers to the portion of return which is attributable to a category's over weight vs. the benchmark. Stock selection refers to the portion of return which is attributable to the equities held vs the benchmark. Interaction refers to the portion of return attributable to the effects of how the selection and allocation effects interact with each other within the portfolio versus the same effects in the benchmark.

Source: FactSet, WisdomTree.

Index: WisdomTree International SmallCap Dividend Index; Benchmark: MSCI EAFE Small Cap Index

WisdomTree International SmallCap Dividend Index Sector Attribution



5-Year as of March 31, 2026

Sector	Average Sector Weights			Total Return		Attribution Component			
	Index	Benchmark	+/-	Index	Benchmark	Allocation Effect	Selection Effect	Interaction Effect	Total Attribution
Consumer Discretionary	12.54%	12.63%	-0.10%	2.69%	-1.22%	0.03%	0.54%	-0.06%	0.51%
Industrials	24.58%	23.21%	1.37%	9.83%	7.58%	0.05%	0.44%	0.02%	0.51%
Health Care	3.78%	6.28%	-2.50%	1.85%	-4.94%	0.23%	0.42%	-0.15%	0.50%
Information Technology	7.39%	9.52%	-2.13%	6.71%	2.31%	0.08%	0.40%	-0.14%	0.35%
Financials	14.28%	11.85%	2.43%	15.74%	14.41%	0.21%	0.18%	-0.04%	0.35%
Consumer Staples	6.72%	5.96%	0.75%	4.47%	-0.74%	-0.12%	0.30%	0.15%	0.32%
Real Estate	8.92%	11.12%	-2.20%	-1.20%	-2.07%	0.15%	0.17%	-0.12%	0.20%
Communication Services	4.26%	4.20%	0.07%	3.51%	-1.46%	-0.01%	0.21%	-0.03%	0.17%
Utilities	2.95%	2.73%	0.22%	17.46%	17.97%	-0.04%	-0.02%	0.16%	0.10%
Energy	3.25%	2.68%	0.57%	16.07%	17.66%	0.02%	-0.06%	0.01%	-0.03%
Materials	11.09%	9.60%	1.49%	3.61%	7.85%	0.00%	-0.45%	0.02%	-0.42%
Other	0.25%	0.22%	0.03%	8.78%	1.93%	0.01%	0.04%	0.01%	0.06%
Total	-	-	-	7.05%	4.43%	0.61%	2.18%	-0.17%	2.62%

Past performance is not indicative of future results. You cannot invest directly in an index. Subject to change.

Allocation refers to the portion of return which is attributable to a category's over weight vs. the benchmark. Stock selection refers to the portion of return which is attributable to the equities held vs the benchmark. Interaction refers to the portion of return attributable to the effects of how the selection and allocation effects interact with each other within the portfolio versus the same effects in the benchmark.

Source: FactSet, WisdomTree.

Index: WisdomTree International SmallCap Dividend Index; Benchmark: MSCI EAFE Small Cap Index

WisdomTree International SmallCap Dividend Index Sector Attribution



10-Year as of March 31, 2026

Sector	Average Sector Weights			Total Return		Attribution Component			
	Index	Benchmark	+/-	Index	Benchmark	Allocation Effect	Selection Effect	Interaction Effect	Total Attribution
Real Estate	7.88%	11.43%	-3.56%	3.67%	2.50%	0.19%	0.22%	-0.13%	0.28%
Consumer Staples	6.54%	6.32%	0.22%	6.31%	4.02%	-0.05%	0.13%	0.08%	0.16%
Health Care	4.04%	6.86%	-2.83%	6.12%	4.33%	0.07%	0.05%	-0.01%	0.11%
Utilities	3.02%	2.49%	0.53%	17.06%	16.50%	-0.01%	0.01%	0.09%	0.09%
Financials	14.36%	11.41%	2.96%	10.12%	9.84%	0.06%	0.04%	-0.05%	0.06%
Energy	3.17%	2.54%	0.62%	8.97%	7.53%	-0.01%	0.03%	0.02%	0.03%
Information Technology	7.71%	10.05%	-2.34%	11.87%	10.81%	-0.06%	0.07%	-0.05%	-0.04%
Materials	10.32%	9.17%	1.15%	9.08%	9.89%	0.01%	-0.10%	0.02%	-0.07%
Consumer Discretionary	14.96%	13.44%	1.52%	3.93%	3.45%	-0.06%	0.06%	-0.09%	-0.09%
Industrials	23.84%	22.49%	1.35%	8.42%	8.82%	0.02%	-0.13%	0.02%	-0.10%
Communication Services	3.97%	3.58%	0.39%	4.21%	7.00%	0.00%	-0.12%	-0.05%	-0.17%
Other	0.19%	0.21%	-0.02%	6.77%	-1.14%	0.01%	0.03%	0.00%	0.03%
Total	-	-	-	7.74%	7.42%	0.18%	0.28%	-0.15%	0.31%

Past performance is not indicative of future results. You cannot invest directly in an index. Subject to change.

Allocation refers to the portion of return which is attributable to a category's over weight vs. the benchmark. Stock selection refers to the portion of return which is attributable to the equities held vs the benchmark. Interaction refers to the portion of return attributable to the effects of how the selection and allocation effects interact with each other within the portfolio versus the same effects in the benchmark.

Source: FactSet, WisdomTree.

Index: WisdomTree International SmallCap Dividend Index; Benchmark: MSCI EAFE Small Cap Index

WisdomTree International SmallCap Dividend Index Sector Attribution



Since Inception as of March 31, 2026

Sector	Average Sector Weights			Total Return		Attribution Component			
	Index	Benchmark	+/-	Index	Benchmark	Allocation Effect	Selection Effect	Interaction Effect	Total Attribution
N/A	3.40%	4.47%	-1.08%	9.05%	0.86%	0.03%	0.48%	-0.07%	0.44%
Real Estate	6.48%	9.50%	-3.02%	4.59%	2.50%	0.14%	0.25%	-0.09%	0.29%
Energy	2.60%	2.98%	-0.38%	6.93%	1.66%	0.04%	0.17%	-0.07%	0.14%
Utilities	2.80%	2.13%	0.67%	13.22%	9.70%	0.00%	0.07%	0.06%	0.12%
Health Care	4.02%	6.27%	-2.25%	7.82%	5.04%	0.01%	0.14%	-0.04%	0.10%
Consumer Staples	6.77%	6.07%	0.70%	6.98%	5.62%	-0.01%	0.06%	0.03%	0.08%
Materials	9.83%	9.00%	0.82%	6.89%	6.32%	0.01%	-0.01%	0.01%	0.02%
Financials	12.79%	11.29%	1.49%	5.17%	5.28%	0.03%	0.00%	-0.02%	0.01%
Information Technology	7.97%	9.24%	-1.28%	8.72%	8.16%	-0.03%	0.02%	-0.02%	-0.03%
Consumer Discretionary	17.29%	14.68%	2.61%	3.69%	3.57%	0.00%	0.00%	-0.09%	-0.09%
Industrials	23.48%	22.11%	1.37%	6.24%	6.63%	0.02%	-0.13%	-0.03%	-0.14%
Other	2.58%	2.26%	0.32%	5.20%	5.81%	0.03%	-0.05%	-0.03%	-0.05%
Total	-	-	-	6.45%	5.55%	0.26%	1.01%	-0.36%	0.90%

Past performance is not indicative of future results. You cannot invest directly in an index. Subject to change.

Allocation refers to the portion of return which is attributable to a category's over-weight vs. the benchmark. Stock selection refers to the portion of return which is attributable to the equities held vs the benchmark. Interaction refers to the portion of return attributable to the effects of how the selection and allocation effects interact with each other within the portfolio versus the same effects in the benchmark. Source: FactSet, WisdomTree.

Index: WisdomTree International SmallCap Dividend Index; Benchmark: MSCI EAFE Small Cap Index

Inception date for the WisdomTree International SmallCap Dividend Index was 05/31/2006. Since inception performance begins on 05/31/2006, the first full month of Index performance.

WisdomTree International SmallCap Dividend Index Dividend Yield Attribution



10-Year as of March 31, 2026

Category	Average Category Weights			Total Return		Attribution Component			Total Attribution
	Index	Benchmark	+/-	Index	Benchmark	Allocation Effect	Selection Effect	Interaction Effect	
1st Quintile (Highest Div. Yield)	37.63%	14.84%	22.79%	8.07%	8.82%	0.60%	-0.15%	-0.16%	0.29%
2nd Quintile	23.63%	18.11%	5.52%	8.01%	8.41%	0.12%	-0.11%	-0.02%	-0.01%
3rd Quintile	18.57%	17.11%	1.46%	7.82%	7.66%	-0.03%	0.01%	0.01%	-0.01%
4th Quintile	12.91%	18.33%	-5.42%	5.88%	5.98%	0.09%	-0.02%	-0.01%	0.06%
5th Quintile (Lowest Div. Yield)	6.33%	18.56%	-12.23%	6.70%	7.72%	-0.01%	-0.30%	0.20%	-0.10%
Zero Div. Yield	0.75%	12.87%	-12.12%	2.69%	5.57%	0.17%	0.06%	-0.18%	0.05%
N/A	0.19%	0.18%	0.01%	7.09%	-1.55%	0.01%	0.03%	0.00%	0.04%
Total	-	-	-	7.74%	7.42%	0.95%	-0.49%	-0.16%	0.31%

Past performance is not indicative of future results. You cannot invest directly in an index. Subject to change.

Allocation refers to the portion of return which is attributable to a category's over weight vs. the benchmark. Stock selection refers to the portion of return which is attributable to the equities held vs the benchmark. Interaction refers to the portion of return attributable to the effects of how the selection and allocation effects interact with each other within the portfolio versus the same effects in the benchmark.

Source: FactSet, WisdomTree.

Index: WisdomTree International SmallCap Dividend Index; Benchmark: MSCI EAFE Small Cap Index

WisdomTree International SmallCap Dividend Index Return on Equity (ROE) Attribution



10-Year as of March 31, 2026

Category	Average Category Weights			Total Return		Attribution Component			
	Index	Benchmark	+/-	Index	Benchmark	Allocation Effect	Selection Effect	Interaction Effect	Total Attribution
1st Quintile (Highest ROE)	28.15%	21.29%	6.86%	8.71%	8.08%	0.02%	0.09%	0.10%	0.21%
2nd Quintile	19.98%	19.98%	-0.00%	7.72%	8.35%	0.01%	-0.14%	-0.01%	-0.15%
3rd Quintile	19.59%	17.89%	1.70%	8.48%	8.76%	-0.01%	-0.05%	0.03%	-0.03%
4th Quintile	16.17%	16.91%	-0.75%	7.45%	6.41%	0.03%	0.19%	-0.06%	0.16%
5th Quintile (Lowest ROE)	11.48%	14.85%	-3.38%	6.77%	7.27%	-0.01%	-0.08%	-0.02%	-0.11%
Negative Return	3.79%	8.05%	-4.26%	5.22%	5.38%	0.10%	0.12%	-0.09%	0.13%
N/A	0.85%	1.02%	-0.17%	3.33%	-2.09%	0.03%	0.08%	-0.01%	0.10%
Total	-	-	-	7.74%	7.42%	0.17%	0.20%	-0.06%	0.31%

Past performance is not indicative of future results. You cannot invest directly in an index. Subject to change.

Allocation refers to the portion of return which is attributable to a category's over weight vs. the benchmark. Stock selection refers to the portion of return which is attributable to the equities held vs the benchmark. Interaction refers to the portion of return attributable to the effects of how the selection and allocation effects interact with each other within the portfolio versus the same effects in the benchmark.

Source: FactSet, WisdomTree.

Index: WisdomTree International SmallCap Dividend Index; Benchmark: MSCI EAFE Small Cap Index

Important Information



Please see the [WisdomTree Glossary](#) for definitions of terms and indexes.

This information must be preceded or accompanied by a prospectus. Investors should carefully consider the investment objectives, risks, charges and expenses of the Funds before investing. This and other information can be obtained in the Fund's prospectus or, if available, the summary prospectus by visiting wisdomtree.com/investments. Read the prospectus or, if available, the summary prospectus carefully before you invest.

There are risks associated with investing, including possible loss of principal. Foreign investing involves special risks, such as risk of loss from currency fluctuation or political or economic uncertainty. The securities of small-capitalization companies generally trade in lower volumes and are subject to greater and more unpredictable price changes than larger capitalization stocks or the stock market as a whole. Small-capitalization companies may be particularly sensitive to adverse economic developments as well as changes in interest rates, government regulation, borrowing costs and earnings. Dividends are not guaranteed, and a company currently paying dividends may cease paying dividends at any time. The Fund invests in the securities included in, or representative of, its Index regardless of their investment merit and the Fund does not attempt to outperform its Index. Please read the Fund's prospectus for specific details regarding the Fund's risk profile.

MSCI: Neither MSCI nor any other party involved in or related to compiling, computing or creating the MSCI data makes any express or implied warranties or representations with respect to such data (or the results to be obtained by the use thereof), and all such parties hereby expressly disclaim all warranties of originality, accuracy, completeness, merchantability or fitness for a particular purpose with respect to any such data. Without limiting any of the foregoing, in no event shall MSCI, any of its affiliates or any third party involved in or related to compiling, computing or creating the data have any liability for any direct, indirect, special, punitive, consequential or any other damages (including lost profits), even if notified of the possibility of such.

References to specific securities and their issuers are for illustrative purposes only and are not intended to be, and should not be interpreted as, recommendations to purchase or sell such securities.

Earnings are not guaranteed, and a company currently indicating earnings may cease doing so at any time.

Additional index information is available at wisdomtree.com/investments.

Important Information



The Global Industry Classification Standard (“GICS”) was developed by and is the exclusive property and a service mark of MSCI Inc. (“MSCI”) and Standard & Poor’s (“S&P”), a division of The McGraw-Hill Companies, Inc., and is licensed for use by WisdomTree, Inc. Neither MSCI, S&P nor any other party involved in making or compiling the GICS or any GICS classifications makes any express or implied warranties or representations with respect to such standard or classification (or the results to be obtained by the use thereof), and all such parties hereby expressly disclaim all warranties of originality, accuracy, completeness, merchantability and fitness for a particular purpose with respect to any such standard or classification. Without limiting any of the foregoing, in no event shall MSCI, S&P, any of their affiliates or any third party involved in making or compiling the GICS or any GICS classifications have any liability for any direct, indirect, special, punitive, consequential or any other damages (including lost profits), even if notified of the possibility of such damages.

WisdomTree Funds are distributed by Foreside Fund Services, LLC.