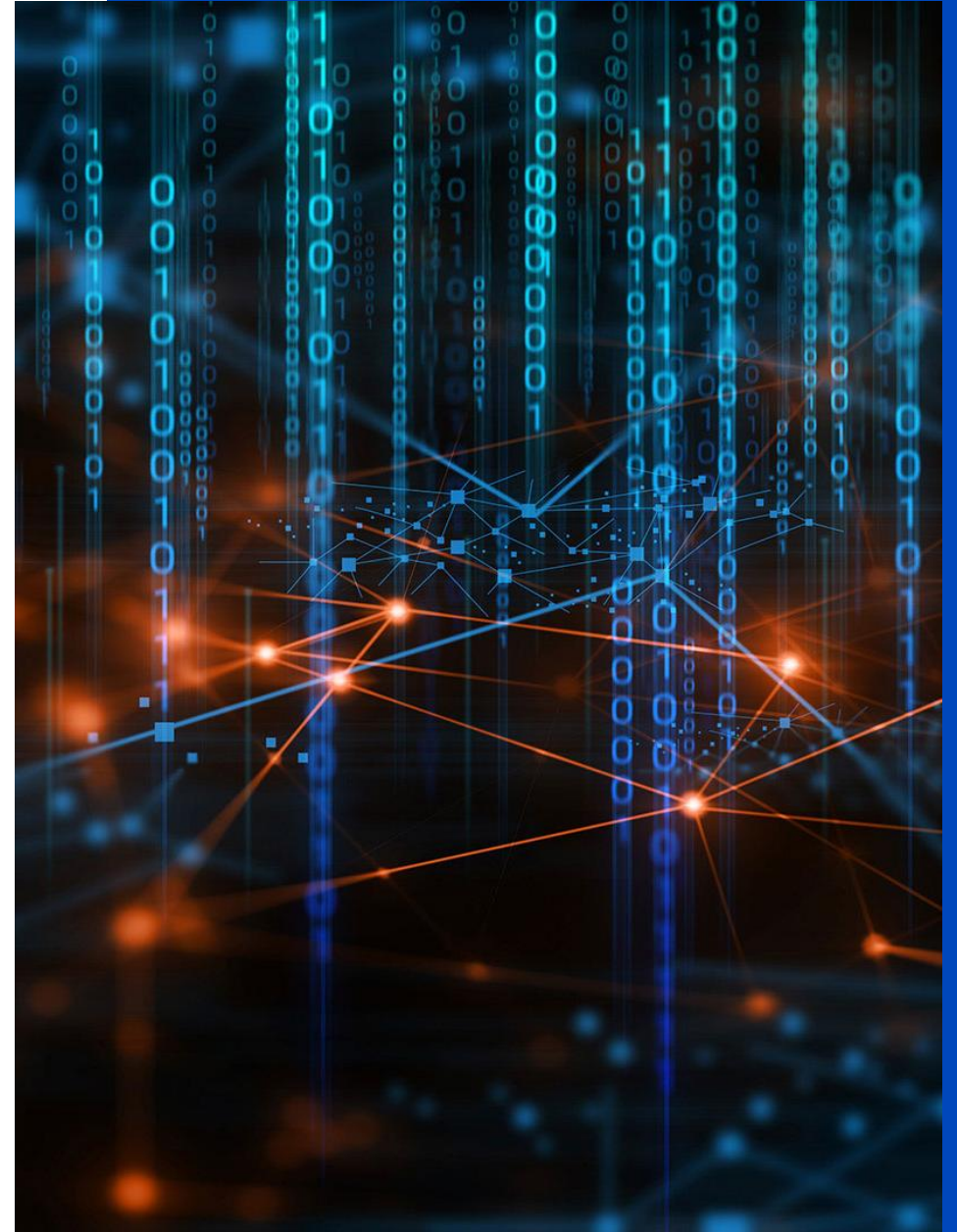




Q1-2026

WisdomTree U.S. LargeCap

Dividend Fund (DLN)



# WisdomTree Company Overview



## + **Who We Are**

WisdomTree is a global financial innovator, empowering investors to shape their future and supporting financial professionals to better serve their clients and grow their businesses.

## + **WisdomTree Solutions**

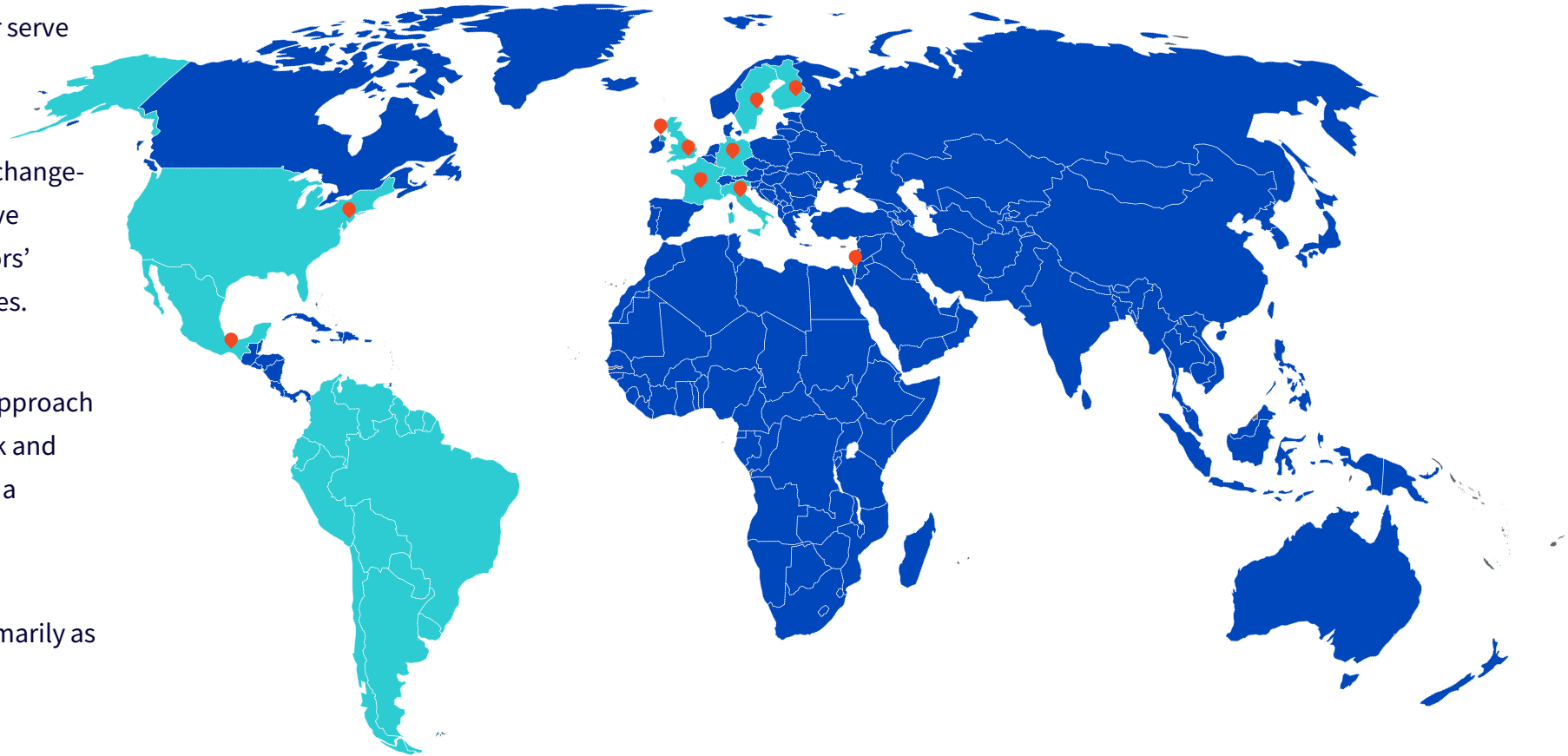
WisdomTree manages \$150.6 billion\* in exchange-traded products globally, through innovative solutions that are designed to meet investors' needs across asset classes and market cycles.

## + **Investment Philosophy & Approach**

Our belief that a fundamentally weighted approach can produce attractive returns with less risk and expense than active management made us a pioneer in factor-based investing.

## + **What We Can Deliver**

Our investment strategies are available primarily as ETFs which can provide intra-day liquidity, transparency, and tax efficiency.

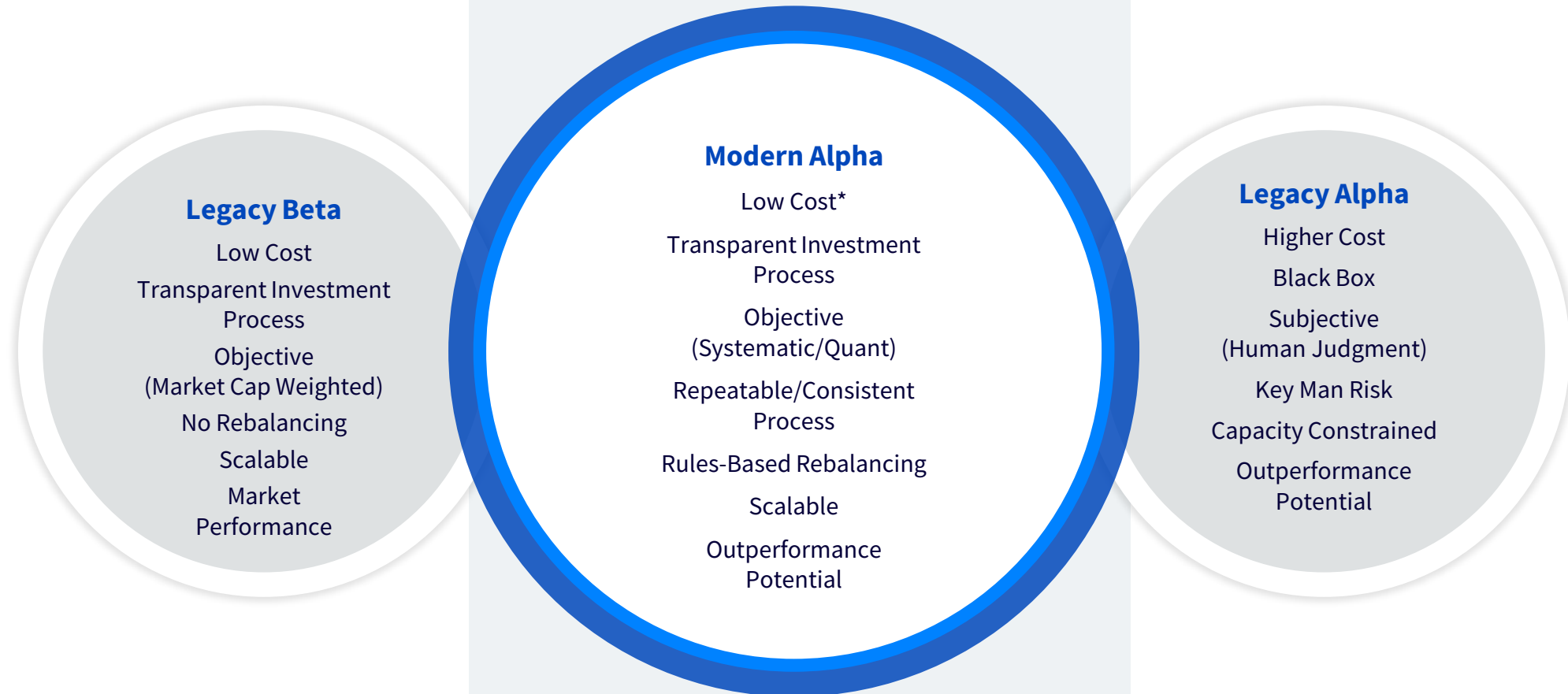


\*As of March 31, 2026

# WisdomTree Modern Alpha®



Modern Alpha combines the outperformance potential of active with the benefits of passive— to offer investors strategies that are built to perform.



\* Ordinary brokerage commissions apply.

# WisdomTree Research Team

Globally integrated research team  
focused on all major asset classes  
including equities, fixed income,  
commodities, and alternatives.



**Professor Jeremy Siegel, PhD**

Senior Economist to WisdomTree  
and Emeritus Professor of Finance,  
The Wharton School of the  
University of Pennsylvania



**Jeremy Schwartz, CFA**

Global CIO



**Christopher Gannatti, CFA**

Global Head of Research



**Kevin Flanagan**

Head of Investment and Fixed  
Income Strategy



**Jeff Weniger, CFA**

Head of Equity Strategy



**Rick Harper**

CIO, Fixed Income &  
Model Portfolios



**Alejandro Saltiel, CFA**

Head of Indexes, U.S.



**Matt Wagner, CFA**

Director, Research



**Liqian Ren**

Director of Modern Alpha

**\$150.6B\***

EXCHANGE-TRADED PRODUCTS  
GLOBALLY

**30+**

PROFESSIONALS ON GLOBAL  
RESEARCH TEAM

**15+**

PHD, CFA, & CIMA® DESIGNATIONS

\*As of March 31, 2026



# WisdomTree U.S. LargeCap Dividend Fund (DLN)

# Our Philosophy

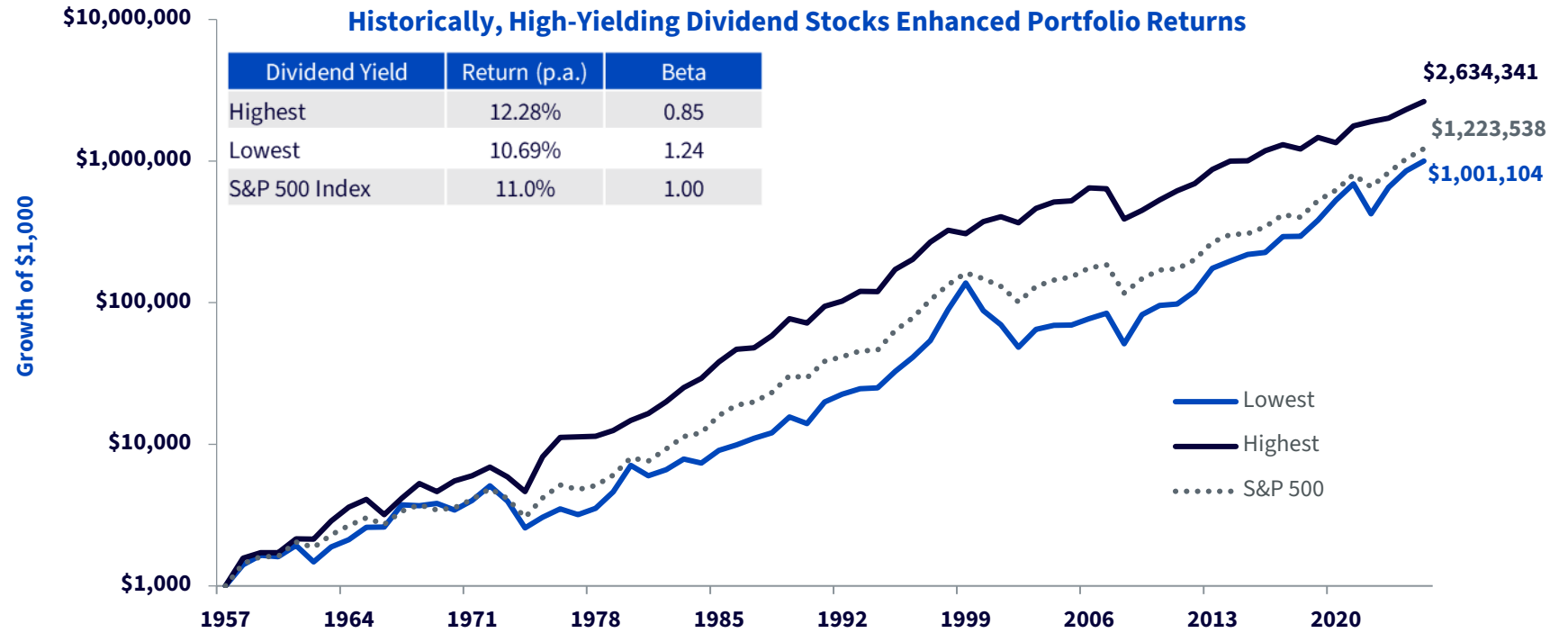
- ▶ Pricing Errors & Return Premiums Exist
- ▶ Fundamentals Matter
- ▶ The Concept of Relative Value is Important



# Why Dividends for Value?



- + Dividends have provided the majority of the stock market's real return over time
- + Dividends can help mitigate downside risk during market bubbles
- + Dividends are an unambiguous objective measure, cannot be restated and can be applied globally



Source: Professor Jeremy Siegel, *The Future for Investors* (2005), source updated for 2025 data. Uses the S&P 500 universe as of 12/31/25. Average annual total returns, 1957–2025. Each stock in S&P 500 is ranked from highest to lowest by dividend yield on December 31 of every year and placed into “quintiles,” baskets of stocks, with 100 stocks in each basket. The stocks in the quintiles are weighted by their market capitalization. Top and bottom quintiles are shown for simplicity. The dividend yield is defined as each stock's annual dividends per share divided by its stock price as of December 31 of that year. p.a.=per annum. **Past performance is not indicative of future results. You cannot invest directly in an index. Index performance does not represent actual fund or portfolio performance. A fund or portfolio may differ significantly from the securities included in the index. Index performance assumes reinvestment of dividends but does not reflect any management fees, transaction costs or other expenses that would be incurred by a portfolio or fund, or brokerage commissions on transactions in fund shares. Such fees, expenses and commissions could reduce returns.**

# Investment Process: U.S. Large Cap Dividends



Start with ~3,500 publicly traded U.S. companies that meet specified market cap and liquidity requirements

Remove companies most at risk of cutting dividends from the starting universe based on quantitative risk screens

Screen to include the ~1,400 dividend-paying companies

Include the largest 300 names

Should the ratio of a security's weight relative to its weight in a market capitalization weighted version of the index reach above 3x or fall below 0.33x, the weight of the company will be reduced or increased to meet the 3x or 0.33x thresholds, respectively.

# WisdomTree U.S. LargeCap Dividend Fund Performance



Data as of March 31, 2026

| Name  | Cumulative Returns |              | Average Annual Total Returns as of March 31, 2026 |              |              |              |                 |
|---|--------------------|--------------|---|--------------|--------------|--------------|-----------------|
|   | QTD                | YTD          | 1-Year  | 3-Year       | 5-Year       | 10-Year      | Since Inception |
| WisdomTree U.S. LargeCap Dividend Fund (NAV)          | 1.89%              | 1.89%        | 14.83%  | 15.51%       | 11.81%       | 12.06%       | 9.46%           |
| WisdomTree U.S. LargeCap Dividend Fund (Market Price) | 1.88%              | 1.88%        | 14.79%  | 15.53%       | 11.77%       | 12.06%       | 9.44%           |
| S&P 500 Value (TR)                                    | 0.03%              | 0.03%        | 12.91%  | 13.90%       | 10.68%       | 11.49%       | 8.58%           |
| <b>Excess Return (NAV)</b>                            | <b>1.85%</b>       | <b>1.85%</b> | <b>1.92%</b>                                      | <b>1.61%</b> | <b>1.13%</b> | <b>0.57%</b> | <b>0.88%</b>    |

| Name   | Calendar Year Returns |              |                |              |              |              |               |              |              |               |
|--|-----------------------|--------------|----------------|--------------|--------------|--------------|---------------|--------------|--------------|---------------|
|  | 2025                  | 2024         | 2023           | 2022         | 2021         | 2020         | 2019          | 2018         | 2017         | 2016          |
| WisdomTree U.S. LargeCap Dividend Fund (NAV) | 15.59%                | 19.55%       | 9.93%          | -3.79%       | 25.60%       | 4.55%        | 29.03%        | -5.77%       | 18.21%       | 15.37%        |
| S&P 500 Value (TR)                           | 13.19%                | 12.29%       | 22.23%         | -5.22%       | 24.90%       | 1.36%        | 31.93%        | -8.95%       | 15.36%       | 17.40%        |
| <b>Excess Return (NAV)</b>                   | <b>2.40%</b>          | <b>7.26%</b> | <b>-12.30%</b> | <b>1.43%</b> | <b>0.70%</b> | <b>3.19%</b> | <b>-2.90%</b> | <b>3.18%</b> | <b>2.85%</b> | <b>-2.02%</b> |

| Fund Details                           |        |                |                     |                   |
|--|--------|----------------|---------------------|-------------------|
| Name                                   | Ticker | Inception Date | Gross Expense Ratio | Net Expense Ratio |
| WisdomTree U.S. LargeCap Dividend Fund | DLN    | 06/16/2006     | 0.28%               | 0.28%             |

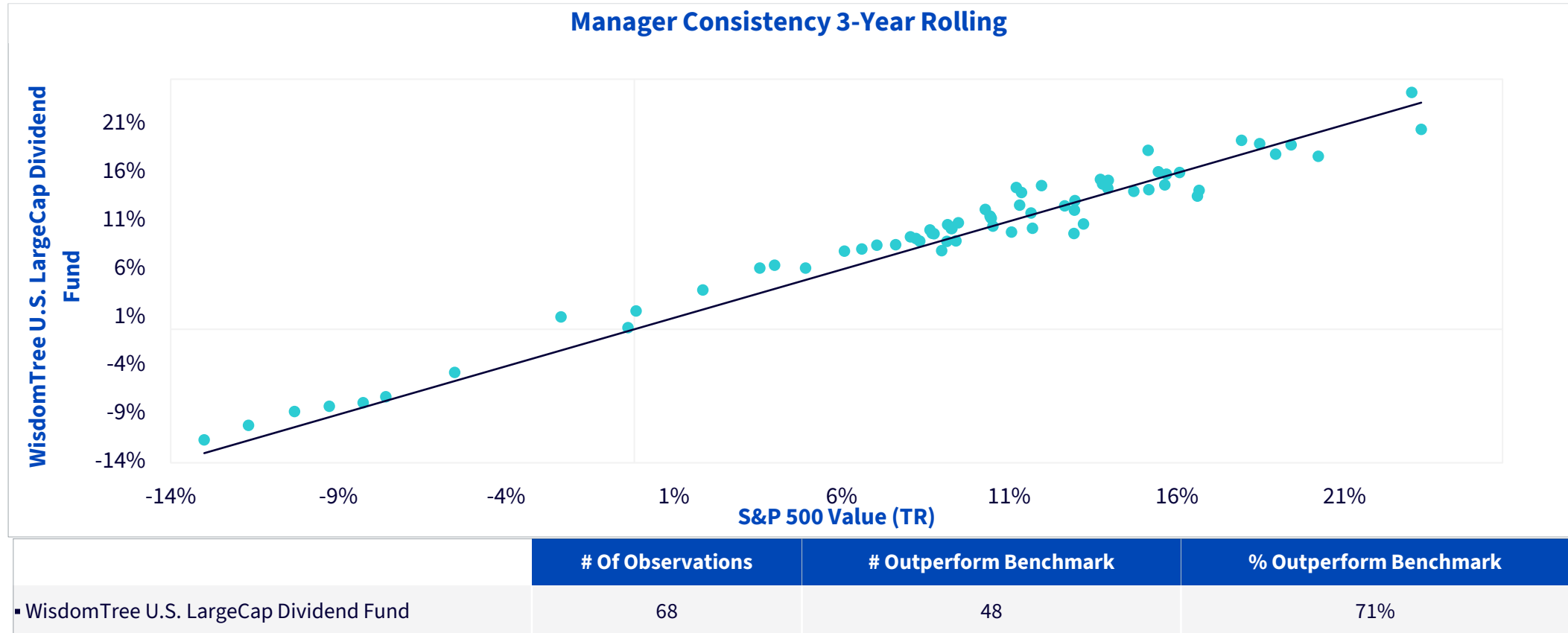
Performance is historical and does not guarantee future results. Current performance may be lower or higher than quoted. Investment returns and principal value of an investment will fluctuate so that an investor's shares, when redeemed, may be worth more or less than their original cost. Performance data for the most recent month-end is available at [wisdomtree.com/investments](http://wisdomtree.com/investments). WisdomTree shares are bought and sold at market price (not NAV) and are not individually redeemed from the Fund. Total Returns are calculated using the daily 4:00 p.m. EST net asset value (NAV). Market price returns reflect the midpoint of the bid/ask spread as of the close of trading on the exchange where Fund shares are listed. Market price returns do not represent the returns you would receive if you traded shares at other times. You cannot invest directly in an index.

Sources: WisdomTree, FactSet.

# WisdomTree U.S. LargeCap Dividend Fund Manager Consistency



Data as of March 31, 2026

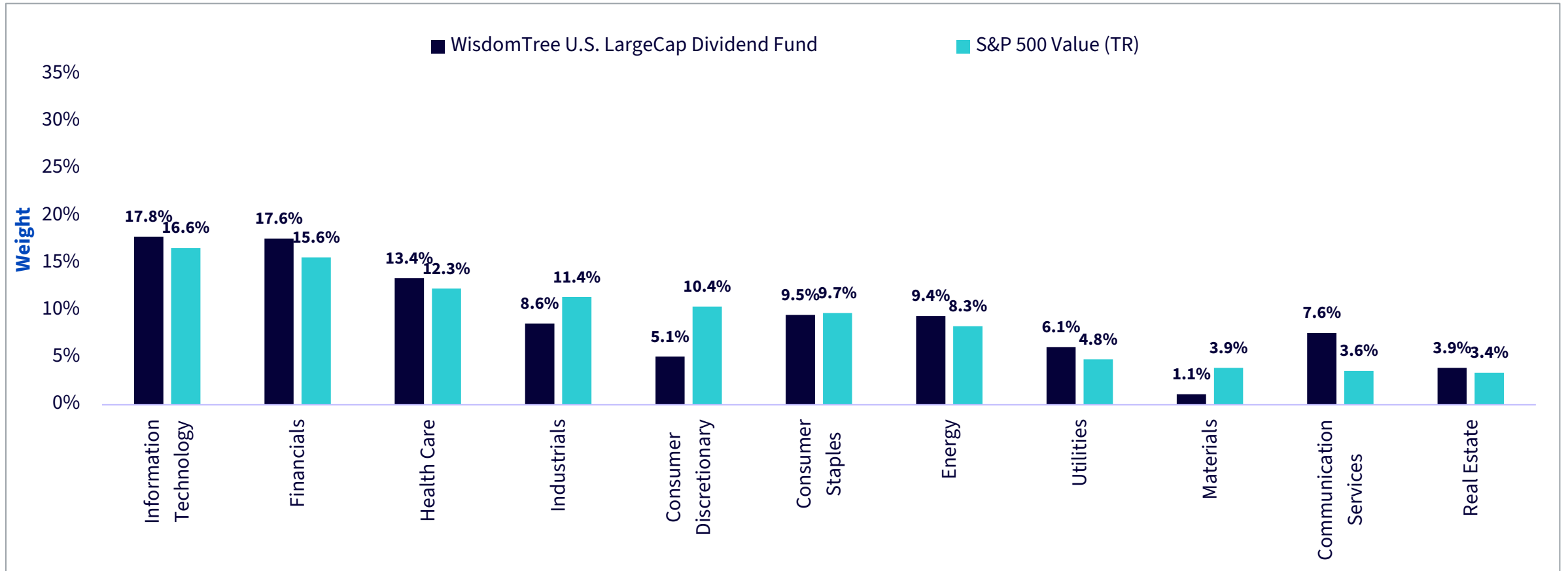


Source: WisdomTree. Dots represent trailing 3-year rolling returns of the WisdomTree U.S. LargeCap Dividend Fund and the S&P 500 Value (TR) using quarterly observations. Inception date for the fund was 06/16/2006. Returns for the fund based on net asset value. Returns for the benchmark index based on total returns. **Past performance is not indicative of future results. You cannot invest directly in an index.**

# WisdomTree U.S. LargeCap Dividend Fund Sector Weights



Data as of March 31, 2026



Source: WisdomTree and FactSet.  
Sector weights are subject to change. You cannot invest directly in an index.

# WisdomTree U.S. LargeCap Dividend Fund Characteristics



Data as of March 31, 2026

| Characteristics                              | WisdomTree U.S. LargeCap Dividend Fund | S&P 500 Value (TR) |
|--|--|--------------------|
| <b>Size</b>                                  |  |                    |
| Weighted Average Market Cap (\$bn)           | 600.42                                 | 510.24             |
| Median Market Cap (\$bn)                     | 52.42                                  | 34.40              |
| Over \$10 billion                            | 99.97%                                 | 99.22%             |
| \$2 billion - \$10 billion                   | 0.03%                                  | 0.78%              |
| Under \$2 billion                            | 0.00%                                  | 0.00%              |
| <b>Valuation &amp; Other Characteristics</b> |  |                    |
| Price/Earnings (Trailing)                    | 20.78                                  | 22.11              |
| Price/Book                                   | 3.86                                   | 3.59               |
| Return on Equity                             | 17.16%                                 | 15.25%             |
| Dividend Yield                               | 2.22%                                  | 1.90%              |
| SEC 30-Day Yield                             | 2.02%                                  | N/A                |
| Number of Holdings                           | 309                                    | 439                |
| <b>Risk (Since Inception*)</b>               |  |                    |
| Standard Deviation                           | 13.84%                                 | 15.18%             |
| Sharpe Ratio                                 | 0.70                                   | 0.59               |
| Information Ratio                            | 0.21                                   | 0.00               |
| Up Capture                                   | 92.74%                                 | 100.00%            |
| Down Capture                                 | 88.02%                                 | 100.00%            |
| Alpha  | 1.79%                                  | 0.00%              |
| Beta   | 0.89                                   | 1.00               |

Source: WisdomTree, FactSet. \*Beginning first full month following inception on 06/16/2006  
**Past performance is not indicative of future results. You cannot invest directly in an index.**

# WisdomTree U.S. LargeCap Dividend Fund Factor Breakdown



Factor Calculation for July 31, 2006 to February 28, 2026

| Name                                   | Mkt-RF<br>(Beta) | SMB<br>(Size) | HML<br>(Value) | RMW<br>(Quality) | CMA<br>(Investment) |
|--|------------------|---------------|----------------|------------------|---------------------|
| WisdomTree U.S. LargeCap Dividend Fund | 0.89             | -0.16         | 0.22           | 0.15             | 0.18                |
| S&P 500 Value (TR)                     | 0.95             | -0.07         | 0.32           | -0.02            | 0.12                |

July 31, 2006 represents the beginning of the first full month of returns since the fund's inception.

**Beta (Mkt-RF)** refers to the sensitivity of each respective index to movements in the broad market.

**Size (SMB)** refers to small-minus-big and is the sensitivity or factor loading to small caps, with higher numbers indicating greater loading to small caps.

**Value (HML)** refers to high-minus-low and is the sensitivity or factor loading to value, specifically the book value-to-market value ratio, with higher meaning more loading toward value.

**Profitability (RMW)** refers to robust-minus-weak and is the sensitivity or factor loading to operating profitability.

**Investment (CMA)** premium associated with investing in companies that grow assets conservatively vs. those that grow them aggressively; a higher loading suggests a positive sensitivity with this premium, while a negative loading suggests the opposite.

**You cannot invest directly in an index. Past performance is not indicative of future results.**

Data chosen from latest available date.



Source: Bloomberg, WisdomTree.



# Appendix

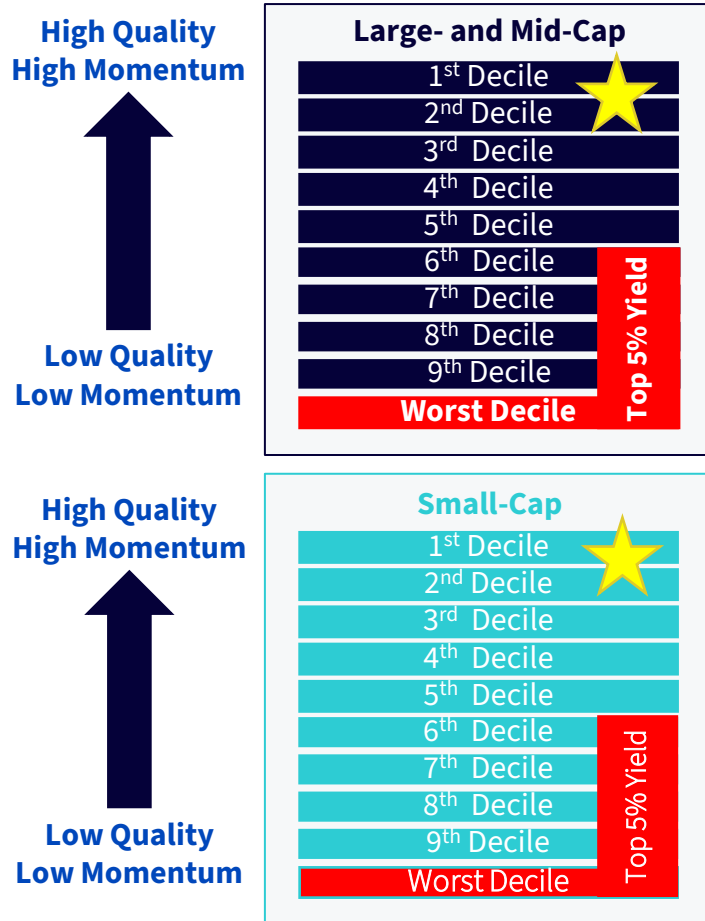
# Composite Risk Score (CRS)

- + **The Composite Risk Score uses Quality and Momentum scores to identify the riskiest companies**
- + **This aims to remove or limit the impact of such companies in indexes**

|  |   |  |
|--|---|--|
| <p><b>Quality*</b></p>  <p><b>50%</b></p> | <p><b>Static:</b></p> <ul style="list-style-type: none"><li>+ Last Return on Equity (ROE)</li><li>+ Last Return on Assets (ROA)</li><li>+ Last Gross Profits over Assets (GPOA)</li><li>+ Last Cash Flows over Assets (CFOA)</li></ul> <p><b>Dynamic:</b></p> <ul style="list-style-type: none"><li>+ ROE Trend</li><li>+ ROA Trend</li><li>+ GPOA Trend</li><li>+ CFOA Trend</li></ul> | <p><b>Better quality stocks have tended to outperform</b></p> <p>Selecting stocks based on the last but also trailing 3-year ROE and ROA readings rewards companies that currently have good but also improving quality attributes inside each of the industry groups.</p> |
| <p><b>Momentum</b></p>  <p><b>50%</b></p> | <ul style="list-style-type: none"><li>+ Average of Risk-adjusted total returns for the last 6m and last 12m</li><li>+ Risk-adjusted total returns = Historical Return divided by Volatility</li></ul>   | <p><b>Momentum has tended to outperform</b></p> <p>6-month and 12-month returns help capture medium- to long-term price trends. Adjusting returns for volatility avoids tilting towards stocks with high return but also high volatility.</p>                              |

\*Quality score is an equal weight of the 8 scores (6 data points (3 and 3) are needed per stocks to be included). Data is normalized with a cross sectorial Z Score in each industry groups. Trends are calculated as a 12 quarters historical Z Score in each industry groups.

# The Composite Risk Score: Filtering Out the Riskiest Dividend Payers and Rewarding Higher Quality Companies



- + The Composite Risk Score (CRS) is used to **create a list of riskier stocks**
- + All stocks (dividend payers or not) are ranked across 6 distinct universes → 3 regions (US, Developed International, and Emerging Markets) separated between large-/mid-cap and small-caps
- + In each universe:
  - + The stocks in the **bottom 10% of stocks ranked by CRS** are excluded
  - + The stocks in the **Top 5% by dividend yield and bottom half by CRS** are also excluded
- + CRS is also used to **create a list of “Good Stocks”, which is the 2 top deciles**
  - + In all strategies (except Quality Dividend Growth), **the good stocks are overweighted, the \$ dividend stream of those stocks is increased by 50%** to increase their weight

# WisdomTree U.S. LargeCap Dividend Fund Top 10 Holdings



Data as of March 31, 2026

| Top 10 Holdings                 | Sector                 | Weight        |
|---------------------------------|------------------------|---------------|
| Nvidia Corp                     | Information Technology | 3.38%         |
| JPMorgan Chase & Co             | Financials             | 3.30%         |
| Microsoft Corp                  | Information Technology | 2.96%         |
| Apple Inc                       | Information Technology | 2.95%         |
| Exxon Mobil Corp                | Energy                 | 2.77%         |
| Chevron Corp                    | Energy                 | 2.28%         |
| Johnson & Johnson               | Health Care            | 2.11%         |
| Broadcom Inc                    | Information Technology | 1.92%         |
| AbbVie Inc                      | Health Care            | 1.64%         |
| Philip Morris International Inc | Consumer Staples       | 1.41%         |
| <b>Total</b>                    |                        | <b>24.72%</b> |

Holdings and weights subject to change.  
Source: WisdomTree, FactSet.

# WisdomTree U.S. LargeCap Dividend Fund Characteristics



Data as of March 31, 2026

| Characteristics                              | WisdomTree U.S. LargeCap Dividend Fund | S&P 500 Value (TR) |
|--|--|--------------------|
| <b>Size</b>                                  |  |                    |
| Weighted Average Market Cap (\$bn)           | 600.42                                 | 510.24             |
| Median Market Cap (\$bn)                     | 52.42                                  | 34.40              |
| Over \$10 billion                            | 99.97%                                 | 99.22%             |
| \$2 billion - \$10 billion                   | 0.03%                                  | 0.78%              |
| Under \$2 billion                            | 0.00%                                  | 0.00%              |
| <b>Valuation &amp; Other Characteristics</b> |  |                    |
| Price/Earnings (Trailing)                    | 20.78                                  | 22.11              |
| Price/Book                                   | 3.86                                   | 3.59               |
| Return on Equity                             | 17.16%                                 | 15.25%             |
| Dividend Yield                               | 2.22%                                  | 1.90%              |
| SEC 30-Day Yield                             | 2.02%                                  | N/A                |
| Number of Holdings                           | 309                                    | 439                |
| <b>Risk (Since Inception*)</b>               |  |                    |
| Standard Deviation                           | 13.84%                                 | 15.18%             |
| Sharpe Ratio                                 | 0.70                                   | 0.59               |
| Information Ratio                            | 0.21                                   | 0.00               |
| Up Capture                                   | 92.74%                                 | 100.00%            |
| Down Capture                                 | 88.02%                                 | 100.00%            |
| Alpha  | 1.79%                                  | 0.00%              |
| Beta   | 0.89                                   | 1.00               |

Source: WisdomTree, FactSet. \*Beginning first full month following inception on 06/16/2006  
**Past performance is not indicative of future results. You cannot invest directly in an index.**

# WisdomTree U.S. LargeCap Dividend Index Sector Attribution



1-Year as of March 31, 2026

| Sector                 | Average Sector Weights |           |        | Total Return  |               | Attribution Component |                  |                    | Total Attribution |
|------------------------|------------------------|-----------|--------|---------------|---------------|-----------------------|------------------|--------------------|-------------------|
|                        | Index                  | Benchmark | +/-    | Index         | Benchmark     | Allocation Effect     | Selection Effect | Interaction Effect |                   |
| Health Care            | 12.68%                 | 13.91%    | -1.23% | 12.72%        | 0.42%         | 0.18%                 | 1.58%            | -0.07%             | 1.68%             |
| Financials             | 19.36%                 | 16.35%    | 3.01%  | 11.66%        | 5.80%         | -0.11%                | 0.89%            | 0.16%              | 0.95%             |
| Communication Services | 6.61%                  | 3.79%     | 2.82%  | 21.27%        | 3.70%         | -0.16%                | 0.62%            | 0.35%              | 0.81%             |
| Consumer Discretionary | 4.56%                  | 9.10%     | -4.54% | 4.37%         | 3.51%         | 0.49%                 | 0.27%            | -0.19%             | 0.57%             |
| Energy                 | 7.91%                  | 6.11%     | 1.79%  | 36.92%        | 37.49%        | 0.38%                 | -0.01%           | 0.00%              | 0.36%             |
| Industrials            | 8.81%                  | 9.29%     | -0.48% | 21.63%        | 16.65%        | -0.10%                | 0.43%            | -0.07%             | 0.26%             |
| Utilities              | 6.09%                  | 4.04%     | 2.05%  | 19.09%        | 16.99%        | -0.02%                | 0.07%            | 0.04%              | 0.09%             |
| Real Estate            | 4.43%                  | 3.13%     | 1.31%  | 5.69%         | -0.27%        | -0.22%                | 0.20%            | 0.04%              | 0.02%             |
| Materials              | 1.07%                  | 3.52%     | -2.45% | 6.20%         | 17.40%        | -0.12%                | -0.33%           | 0.23%              | -0.22%            |
| Consumer Staples       | 11.64%                 | 8.13%     | 3.51%  | 5.29%         | 4.13%         | -0.75%                | 0.09%            | 0.11%              | -0.56%            |
| Information Technology | 16.84%                 | 22.62%    | -5.78% | 21.93%        | 23.18%        | -1.41%                | -0.28%           | -0.03%             | -1.72%            |
| Other                  | -                      | 0.00%     | -0.00% | 0.00%         | -0.40%        | 0.00%                 | 0.00%            | 0.00%              | 0.00%             |
| <b>Total</b>           | -                      | -         | -      | <b>15.17%</b> | <b>12.91%</b> | <b>-1.84%</b>         | <b>3.53%</b>     | <b>0.56%</b>       | <b>2.25%</b>      |

**Past performance is not indicative of future results. You cannot invest directly in an index.** Subject to change.

Allocation refers to the portion of return which is attributable to a category's over weight vs. the benchmark. Stock selection refers to the portion of return which is attributable to the equities held vs the benchmark. Interaction refers to the portion of return attributable to the effects of how the selection and allocation effects interact with each other within the portfolio versus the same effects in the benchmark.

Source: FactSet, WisdomTree.

Index: WisdomTree U.S. LargeCap Dividend Index; Benchmark: S&P 500 Value Index

# WisdomTree U.S. LargeCap Dividend Index Sector Attribution



3-Year as of March 31, 2026

| Sector                 | Average Sector Weights |           |        | Total Return  |               | Attribution Component |                  |                    |                   |
|------------------------|------------------------|-----------|--------|---------------|---------------|-----------------------|------------------|--------------------|-------------------|
|                        | Index                  | Benchmark | +/-    | Index         | Benchmark     | Allocation Effect     | Selection Effect | Interaction Effect | Total Attribution |
| Information Technology | 18.00%                 | 16.70%    | 1.31%  | 26.60%        | 13.70%        | -0.67%                | 0.94%            | 1.53%              | 1.80%             |
| Health Care            | 13.75%                 | 14.15%    | -0.40% | 10.04%        | 2.95%         | 0.00%                 | 1.24%            | -0.26%             | 0.98%             |
| Financials             | 17.34%                 | 19.27%    | -1.93% | 22.18%        | 18.93%        | -0.45%                | 0.68%            | -0.05%             | 0.18%             |
| Consumer Discretionary | 5.24%                  | 8.28%     | -3.04% | 6.63%         | 7.68%         | 0.20%                 | -0.14%           | 0.07%              | 0.14%             |
| Utilities              | 5.33%                  | 4.62%     | 0.71%  | 12.72%        | 12.95%        | 0.01%                 | -0.02%           | 0.02%              | 0.01%             |
| Real Estate            | 4.49%                  | 3.81%     | 0.67%  | 7.33%         | 6.71%         | -0.07%                | 0.02%            | 0.01%              | -0.04%            |
| Materials              | 1.32%                  | 3.40%     | -2.09% | 1.62%         | 11.10%        | 0.03%                 | -0.35%           | 0.22%              | -0.10%            |
| Communication Services | 4.52%                  | 5.55%     | -1.03% | 12.77%        | 17.18%        | -0.21%                | -0.68%           | 0.76%              | -0.14%            |
| Industrials            | 8.95%                  | 10.68%    | -1.73% | 14.42%        | 16.09%        | -0.07%                | -0.24%           | 0.07%              | -0.24%            |
| Energy                 | 8.58%                  | 5.07%     | 3.50%  | 18.13%        | 21.13%        | 0.07%                 | 0.03%            | -0.39%             | -0.29%            |
| Consumer Staples       | 12.48%                 | 8.47%     | 4.02%  | 8.96%         | 7.64%         | -0.55%                | 0.14%            | 0.08%              | -0.33%            |
| Other                  | -                      | 0.00%     | -0.00% | 0.00%         | -1.44%        | 0.00%                 | 0.00%            | 0.00%              | 0.00%             |
| <b>Total</b>           | -                      | -         | -      | <b>15.87%</b> | <b>13.90%</b> | <b>-1.70%</b>         | <b>1.62%</b>     | <b>2.04%</b>       | <b>1.97%</b>      |

**Past performance is not indicative of future results. You cannot invest directly in an index.** Subject to change.

Allocation refers to the portion of return which is attributable to a category's over weight vs. the benchmark. Stock selection refers to the portion of return which is attributable to the equities held vs the benchmark. Interaction refers to the portion of return attributable to the effects of how the selection and allocation effects interact with each other within the portfolio versus the same effects in the benchmark.

Source: FactSet, WisdomTree.

Index: WisdomTree U.S. LargeCap Dividend Index; Benchmark: S&P 500 Value Index

# WisdomTree U.S. LargeCap Dividend Index Sector Attribution



5-Year as of March 31, 2026

| Sector                 | Average Sector Weights |           |        | Total Return  |               | Attribution Component |                  |                    |                   |
|------------------------|------------------------|-----------|--------|---------------|---------------|-----------------------|------------------|--------------------|-------------------|
|                        | Index                  | Benchmark | +/-    | Index         | Benchmark     | Allocation Effect     | Selection Effect | Interaction Effect | Total Attribution |
| Information Technology | 18.08%                 | 14.82%    | 3.25%  | 18.59%        | 7.62%         | -0.68%                | 1.06%            | 1.35%              | 1.73%             |
| Health Care            | 14.74%                 | 14.52%    | 0.22%  | 10.42%        | 6.00%         | -0.12%                | 0.91%            | -0.30%             | 0.49%             |
| Consumer Discretionary | 5.41%                  | 8.00%     | -2.59% | 5.46%         | 5.01%         | 0.11%                 | -0.08%           | 0.10%              | 0.13%             |
| Utilities              | 5.52%                  | 4.89%     | 0.63%  | 9.11%         | 9.51%         | 0.02%                 | -0.03%           | 0.01%              | 0.00%             |
| Materials              | 1.62%                  | 3.49%     | -1.87% | 0.18%         | 7.23%         | 0.06%                 | -0.27%           | 0.15%              | -0.07%            |
| Industrials            | 8.59%                  | 11.24%    | -2.65% | 10.53%        | 10.92%        | -0.01%                | -0.09%           | 0.02%              | -0.09%            |
| Financials             | 15.85%                 | 18.76%    | -2.91% | 10.52%        | 11.16%        | -0.14%                | 0.02%            | 0.01%              | -0.11%            |
| Energy                 | 7.78%                  | 5.44%     | 2.34%  | 26.10%        | 28.20%        | 0.25%                 | 0.04%            | -0.41%             | -0.12%            |
| Real Estate            | 4.61%                  | 3.83%     | 0.79%  | 5.04%         | 4.60%         | -0.14%                | 0.02%            | 0.00%              | -0.13%            |
| Communication Services | 4.34%                  | 5.98%     | -1.64% | 1.62%         | 5.22%         | -0.17%                | -0.63%           | 0.63%              | -0.16%            |
| Consumer Staples       | 13.45%                 | 9.02%     | 4.44%  | 8.49%         | 7.71%         | -0.33%                | 0.10%            | 0.03%              | -0.19%            |
| Other                  | 0.01%                  | 0.01%     | -0.01% | 1.55%         | 5.88%         | -0.01%                | 0.00%            | 0.00%              | -0.01%            |
| <b>Total</b>           | -                      | -         | -      | <b>12.16%</b> | <b>10.68%</b> | <b>-1.16%</b>         | <b>1.05%</b>     | <b>1.59%</b>       | <b>1.49%</b>      |

**Past performance is not indicative of future results. You cannot invest directly in an index.** Subject to change.

Allocation refers to the portion of return which is attributable to a category's over weight vs. the benchmark. Stock selection refers to the portion of return which is attributable to the equities held vs the benchmark. Interaction refers to the portion of return attributable to the effects of how the selection and allocation effects interact with each other within the portfolio versus the same effects in the benchmark.

Source: FactSet, WisdomTree.

Index: WisdomTree U.S. LargeCap Dividend Index; Benchmark: S&P 500 Value Index

# WisdomTree U.S. LargeCap Dividend Index Sector Attribution



10-Year as of March 31, 2026

| Sector                 | Average Sector Weights |           |        | Total Return  |               | Attribution Component |                  |                    |                   |
|------------------------|------------------------|-----------|--------|---------------|---------------|-----------------------|------------------|--------------------|-------------------|
|                        | Index                  | Benchmark | +/-    | Index         | Benchmark     | Allocation Effect     | Selection Effect | Interaction Effect | Total Attribution |
| Information Technology | 17.86%                 | 12.11%    | 5.75%  | 22.79%        | 14.97%        | -0.08%                | 0.75%            | 1.32%              | 1.99%             |
| Health Care            | 13.69%                 | 13.99%    | -0.29% | 11.99%        | 9.47%         | -0.09%                | 0.62%            | -0.20%             | 0.33%             |
| Utilities              | 5.49%                  | 5.38%     | 0.12%  | 9.05%         | 8.76%         | 0.03%                 | 0.02%            | 0.01%              | 0.05%             |
| Consumer Discretionary | 6.29%                  | 7.51%     | -1.22% | 9.77%         | 9.20%         | 0.04%                 | -0.09%           | 0.10%              | 0.04%             |
| Industrials            | 9.05%                  | 10.57%    | -1.53% | 11.17%        | 10.83%        | -0.03%                | -0.03%           | 0.05%              | -0.02%            |
| Energy                 | 7.83%                  | 7.45%     | 0.39%  | 13.69%        | 13.34%        | 0.08%                 | 0.22%            | -0.33%             | -0.03%            |
| Materials              | 1.90%                  | 3.50%     | -1.60% | 6.89%         | 10.87%        | 0.01%                 | -0.18%           | 0.09%              | -0.07%            |
| Real Estate            | 4.45%                  | 3.20%     | 1.26%  | 5.67%         | 5.36%         | -0.20%                | 0.00%            | 0.01%              | -0.19%            |
| Communication Services | 5.45%                  | 5.73%     | -0.28% | 2.68%         | 6.00%         | -0.19%                | -0.62%           | 0.44%              | -0.37%            |
| Consumer Staples       | 13.50%                 | 9.71%     | 3.80%  | 7.92%         | 7.97%         | -0.40%                | 0.01%            | 0.02%              | -0.37%            |
| Financials             | 14.46%                 | 20.84%    | -6.38% | 12.96%        | 13.35%        | -0.48%                | 0.03%            | 0.01%              | -0.44%            |
| Other                  | 0.01%                  | 0.02%     | -0.01% | 2.25%         | 9.90%         | -0.02%                | 0.00%            | 0.01%              | -0.01%            |
| <b>Total</b>           | -                      | -         | -      | <b>12.40%</b> | <b>11.49%</b> | <b>-1.33%</b>         | <b>0.74%</b>     | <b>1.51%</b>       | <b>0.91%</b>      |

**Past performance is not indicative of future results. You cannot invest directly in an index.** Subject to change.

Allocation refers to the portion of return which is attributable to a category's over weight vs. the benchmark. Stock selection refers to the portion of return which is attributable to the equities held vs the benchmark. Interaction refers to the portion of return attributable to the effects of how the selection and allocation effects interact with each other within the portfolio versus the same effects in the benchmark.

Source: FactSet, WisdomTree.

Index: WisdomTree U.S. LargeCap Dividend Index; Benchmark: S&P 500 Value Index

# WisdomTree U.S. LargeCap Dividend Index Sector Attribution



Since Inception as of March 31, 2026

| Sector                 | Average Sector Weights |           |        | Total Return  |               | Attribution Component |                  |                    |                   |
|------------------------|------------------------|-----------|--------|---------------|---------------|-----------------------|------------------|--------------------|-------------------|
|                        | Index                  | Benchmark | +/-    | Index         | Benchmark     | Allocation Effect     | Selection Effect | Interaction Effect | Total Attribution |
| Information Technology | 17.76%                 | 11.96%    | 5.79%  | 22.07%        | 14.72%        | -0.05%                | 0.66%            | 1.16%              | 1.77%             |
| Health Care            | 13.61%                 | 13.92%    | -0.31% | 11.49%        | 8.92%         | -0.07%                | 0.58%            | -0.18%             | 0.33%             |
| Consumer Discretionary | 6.38%                  | 7.51%     | -1.14% | 9.75%         | 9.31%         | 0.04%                 | -0.09%           | 0.09%              | 0.03%             |
| Utilities              | 5.48%                  | 5.40%     | 0.08%  | 10.58%        | 10.27%        | 0.00%                 | 0.02%            | 0.00%              | 0.03%             |
| Industrials            | 9.08%                  | 10.59%    | -1.51% | 11.26%        | 11.01%        | -0.04%                | -0.04%           | 0.04%              | -0.03%            |
| Energy                 | 7.93%                  | 7.60%     | 0.32%  | 12.58%        | 12.46%        | 0.09%                 | 0.16%            | -0.29%             | -0.04%            |
| Materials              | 1.92%                  | 3.50%     | -1.57% | 6.44%         | 10.41%        | 0.01%                 | -0.16%           | 0.08%              | -0.07%            |
| Real Estate            | 4.45%                  | 3.13%     | 1.31%  | 6.26%         | 5.58%         | -0.16%                | 0.01%            | 0.02%              | -0.14%            |
| Financials             | 14.35%                 | 20.93%    | -6.58% | 11.24%        | 11.73%        | -0.24%                | 0.00%            | 0.02%              | -0.21%            |
| Consumer Staples       | 13.56%                 | 9.74%     | 3.82%  | 8.68%         | 8.65%         | -0.31%                | 0.02%            | 0.02%              | -0.26%            |
| Communication Services | 5.48%                  | 5.69%     | -0.21% | 4.37%         | 7.54%         | -0.13%                | -0.55%           | 0.39%              | -0.28%            |
| Other                  | 0.01%                  | 0.03%     | -0.02% | 2.52%         | 10.67%        | -0.02%                | -0.01%           | 0.01%              | -0.01%            |
| <b>Total</b>           | -                      | -         | -      | <b>12.26%</b> | <b>11.15%</b> | <b>-0.86%</b>         | <b>0.59%</b>     | <b>1.38%</b>       | <b>1.11%</b>      |

**Past performance is not indicative of future results. You cannot invest directly in an index.** Subject to change.

Allocation refers to the portion of return which is attributable to a category's over-weight vs. the benchmark. Stock selection refers to the portion of return which is attributable to the equities held vs the benchmark. Interaction refers to the portion of return attributable to the effects of how the selection and allocation effects interact with each other within the portfolio versus the same effects in the benchmark. Source: FactSet, WisdomTree.

Index: WisdomTree U.S. LargeCap Dividend Index; Benchmark: S&P 500 Value Index

Inception date for the WisdomTree U.S. LargeCap Dividend Index was 05/31/2006. Since inception performance begins on 11/30/2015, the first full month of Index performance.

# WisdomTree U.S. LargeCap Dividend Index Dividend Yield Attribution



10-Year as of March 31, 2026

| Category                          | Average Category Weights |           |         | Total Return  |               | Attribution Component |                  |                    | Total Attribution |
|-----------------------------------|--------------------------|-----------|---------|---------------|---------------|-----------------------|------------------|--------------------|-------------------|
|                                   | Index                    | Benchmark | +/-     | Index         | Benchmark     | Allocation Effect     | Selection Effect | Interaction Effect |                   |
| 1st Quintile (Highest Div. Yield) | 27.73%                   | 21.27%    | 6.47%   | 11.70%        | 12.46%        | 0.07%                 | -0.32%           | -0.03%             | -0.28%            |
| 2nd Quintile                      | 28.70%                   | 24.02%    | 4.68%   | 10.17%        | 10.43%        | -0.16%                | -0.12%           | -0.18%             | -0.46%            |
| 3rd Quintile                      | 20.18%                   | 19.50%    | 0.68%   | 11.20%        | 10.51%        | -0.03%                | 0.34%            | -0.08%             | 0.23%             |
| 4th Quintile                      | 12.48%                   | 13.70%    | -1.22%  | 17.73%        | 12.34%        | -0.15%                | 0.81%            | 0.14%              | 0.80%             |
| 5th Quintile (Lowest Div. Yield)  | 10.86%                   | 11.11%    | -0.25%  | 17.40%        | 11.30%        | 0.04%                 | 0.77%            | 0.11%              | 0.92%             |
| Zero Div. Yield                   | 0.04%                    | 10.38%    | -10.35% | -8.24%        | 11.10%        | -0.19%                | -1.56%           | 1.46%              | -0.29%            |
| N/A                               | 0.01%                    | 0.02%     | -0.00%  | 0.93%         | 8.12%         | -0.02%                | 0.00%            | 0.01%              | -0.01%            |
| <b>Total</b>                      | -                        | -         | -       | <b>12.40%</b> | <b>11.49%</b> | <b>-0.43%</b>         | <b>-0.08%</b>    | <b>1.42%</b>       | <b>0.91%</b>      |

**Past performance is not indicative of future results. You cannot invest directly in an index.** Subject to change.

Allocation refers to the portion of return which is attributable to a category's over weight vs. the benchmark. Stock selection refers to the portion of return which is attributable to the equities held vs the benchmark. Interaction refers to the portion of return attributable to the effects of how the selection and allocation effects interact with each other within the portfolio versus the same effects in the benchmark.

Source: FactSet, WisdomTree.

Index: WisdomTree U.S. LargeCap Dividend Index; Benchmark: S&P 500 Value Index

# WisdomTree U.S. LargeCap Dividend Index Return on Equity (ROE) Attribution



10-Year as of March 31, 2026

| Category                   | Average Category Weights |           |        | Total Return  |               | Attribution Component |                  |                    | Total Attribution |
|----------------------------|--------------------------|-----------|--------|---------------|---------------|-----------------------|------------------|--------------------|-------------------|
|                            | Index                    | Benchmark | +/-    | Index         | Benchmark     | Allocation Effect     | Selection Effect | Interaction Effect |                   |
| 1st Quintile (Highest ROE) | 30.91%                   | 17.32%    | 13.58% | 15.78%        | 13.87%        | 0.36%                 | 0.32%            | 0.55%              | 1.22%             |
| 2nd Quintile               | 19.28%                   | 17.43%    | 1.85%  | 9.30%         | 9.51%         | -0.08%                | 0.06%            | -0.05%             | -0.07%            |
| 3rd Quintile               | 13.91%                   | 16.47%    | -2.56% | 11.26%        | 12.18%        | -0.09%                | -0.22%           | 0.06%              | -0.24%            |
| 4th Quintile               | 16.97%                   | 21.83%    | -4.86% | 10.83%        | 10.47%        | 0.12%                 | 0.11%            | 0.05%              | 0.28%             |
| 5th Quintile (Lowest ROE)  | 11.48%                   | 19.41%    | -7.93% | 10.30%        | 11.45%        | -0.08%                | -0.66%           | 0.42%              | -0.32%            |
| Negative Return            | 1.36%                    | 3.36%     | -2.00% | 7.33%         | 12.64%        | 0.02%                 | 0.03%            | -0.05%             | 0.01%             |
| N/A                        | 6.09%                    | 4.18%     | 1.91%  | 10.73%        | 10.08%        | -0.03%                | 0.05%            | 0.01%              | 0.03%             |
| <b>Total</b>               | -                        | -         | -      | <b>12.40%</b> | <b>11.49%</b> | <b>0.22%</b>          | <b>-0.31%</b>    | <b>1.00%</b>       | <b>0.91%</b>      |

**Past performance is not indicative of future results. You cannot invest directly in an index.** Subject to change.

Allocation refers to the portion of return which is attributable to a category's over weight vs. the benchmark. Stock selection refers to the portion of return which is attributable to the equities held vs the benchmark. Interaction refers to the portion of return attributable to the effects of how the selection and allocation effects interact with each other within the portfolio versus the same effects in the benchmark.

Source: FactSet, WisdomTree.

Index: WisdomTree U.S. LargeCap Dividend Index; Benchmark: S&P 500 Value Index

# Important Information



Please see the [WisdomTree Glossary](#) for definitions of terms and indexes.

**This information must be preceded or accompanied by a prospectus. Investors should carefully consider the investment objectives, risks, charges and expenses of the Funds before investing. This and other information can be obtained in the Fund's prospectus or, if available, the summary prospectus by visiting [wisdomtree.com/investments](http://wisdomtree.com/investments). Read the prospectus or, if available, the summary prospectus carefully before you invest.**

There are risks associated with investing, including possible loss of principal. The Fund invests primarily in the securities of large-capitalization companies. As a result, the Fund's performance may be adversely affected if securities of these companies underperform securities of smaller capitalization companies or the market as a whole. Dividends are not guaranteed, and a company currently paying dividends may cease paying dividends at any time. The Fund invests in the securities included in, or representative of, its Index regardless of their investment merit and the Fund does not attempt to outperform its Index. The composition of the Index is governed by an Index Committee and the Index may not perform as intended. Please read the Fund's prospectus for specific details regarding the Fund's risk profile.

References to specific securities and their issuers are for illustrative purposes only and are not intended to be, and should not be interpreted as, recommendations to purchase or sell such securities.

Earnings are not guaranteed, and a company currently indicating earnings may cease doing so at any time.

Additional index information is available at [wisdomtree.com/investments](http://wisdomtree.com/investments).

# Important Information



The Global Industry Classification Standard (“GICS”) was developed by and is the exclusive property and a service mark of MSCI Inc. (“MSCI”) and Standard & Poor’s (“S&P”), a division of The McGraw-Hill Companies, Inc., and is licensed for use by WisdomTree, Inc. Neither MSCI, S&P nor any other party involved in making or compiling the GICS or any GICS classifications makes any express or implied warranties or representations with respect to such standard or classification (or the results to be obtained by the use thereof), and all such parties hereby expressly disclaim all warranties of originality, accuracy, completeness, merchantability and fitness for a particular purpose with respect to any such standard or classification. Without limiting any of the foregoing, in no event shall MSCI, S&P, any of their affiliates or any third party involved in making or compiling the GICS or any GICS classifications have any liability for any direct, indirect, special, punitive, consequential or any other damages (including lost profits), even if notified of the possibility of such damages.

WisdomTree Funds are distributed by Foreside Fund Services, LLC.