

# What's Hot: Cotton's comeback

Published 24 April 2026

## Aneeka Gupta

Director, Macroeconomic Research, WisdomTree Europe

## Key Takeaways

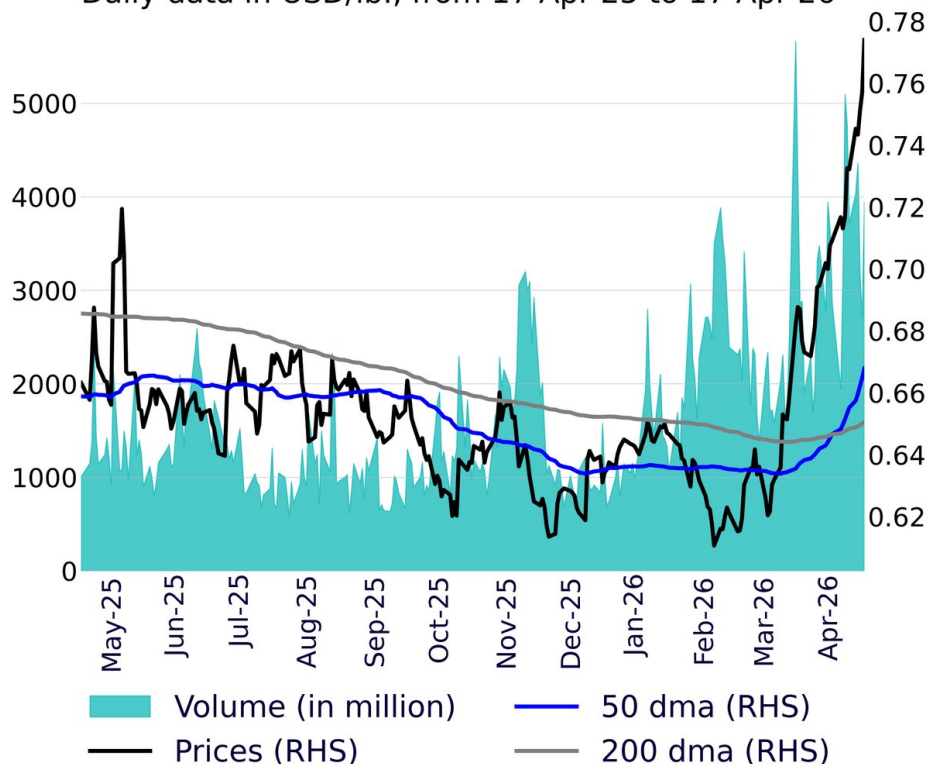
- Global cotton production is set to fall around 4% in 2025/26 while consumption holds steady, ending a prolonged surplus and placing structural downward pressure on inventories, led by a 10% output decline in China.
- Iran war creates an indirect demand tailwind — Strait of Hormuz disruptions have energy prices higher, elevating polyester production costs and incentivising substitution toward natural fibres, adding an underappreciated demand dimension for cotton.
- Net speculative positioning in cotton rebounded last month offering a powerful momentum signal.
- Related Products WisdomTree Cotton, WisdomTree Cotton - EUR Daily Hedged Find out more

Cotton has staged a sharp recovery, reaching a two-year high above 80 US cents per pound, a level that demands attention from commodity investors. The move reflects a confluence of converging forces: a structural shift from surplus to deficit, geopolitically driven input cost pressures, and a futures curve that is beginning to reward long holders.

## Figure 1: Cotton front month futures price

## Cotton Front Month Futures Price

Daily data in USD/lb., from 17 Apr 25 to 17 Apr 26



Source: Bloomberg Finance L.P., WisdomTree from 17 April 2025 to 17 April 2026. **Historical performance is not an indication of future performance and any investments may go down in value.**

## The Iran war and the polyester channel

One of the more underappreciated drivers of cotton's recent move is the indirect demand effect from the Iran conflict. The closure of the Strait of Hormuz, which carries more than 20% of global oil flows, has pushed Brent crude above US\$100/bbl for the first time since 2022. Petroleum product markets (diesel, gasoline, gasoil) are even tighter than crude, reflecting the concentrated impact of disrupted Middle Eastern supply chains.

This matters for cotton because polyester, cotton's primary synthetic substitute in the textile industry, is a petrochemical derivative. As energy prices rise, polyester production costs increase, making cotton relatively more competitive on price. Textile mills and apparel manufacturers facing elevated polyester input costs have an economic incentive to blend in more natural fibre or switch entirely. This substitution dynamic creates a demand tailwind for cotton that is directly linked to energy market conditions and one that could prove durable if the geopolitical situation remains unresolved.

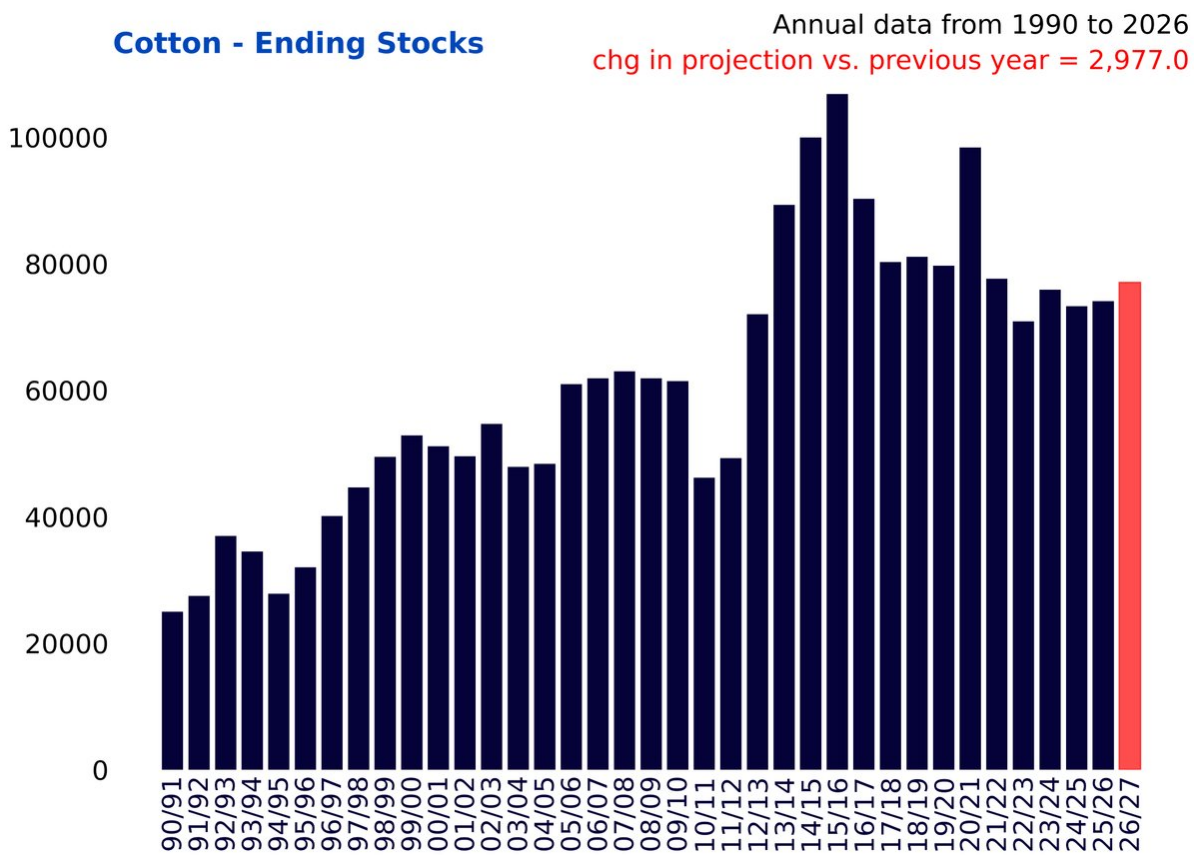
## The inventory inflection point

For much of the past two years, cotton markets operated under the weight of a global surplus, with elevated global ending stocks capping price recovery. According to the International Cotton Advisory Committee

(ICAC), global cotton production is expected to decline by approximately 4% in the 2025/26 crop year, while global consumption remains broadly stable. The supply-side deterioration is geographically concentrated.

China, the world's largest cotton consumer and a significant producer, is expected to see output fall by around 10%, a decline driven by reduced planted acreage and unfavourable growing conditions. Critically, Chinese demand is expected to hold steady at prior-year levels, making Beijing a net draw on global supply rather than a relief valve. India, which accounts for roughly a quarter of global cotton production, is expected to see neither consumption nor production change materially, providing little offset to losses elsewhere.

## Figure 2: Cotton inventories



Source: USDA, Bloomberg, WisdomTree. Note: Ending stocks, inventories and stock to use data from the USDA are annual with monthly update of 2026/2027 estimates. **Historical performance is not an indication of future performance and any investments may go down in value.**

In the United States, the picture is more nuanced. USDA data points to a roughly 4% increase in planted acreage to 9.6mn acres, a modest recovery but one that remains well below the 11.2mn acres planted in 2024. More importantly, the supply outlook faces further upside risks from climate and input cost headwinds, which could prevent planted acreage from translating cleanly into harvested yield. As inventories decline, the buffer that has historically absorbed demand shocks becomes thinner.

## El Nino and fertiliser constraints: weather risk premia re-entering the market

The US Climate Prediction Centre (CPC) has estimated a 61% probability of El Niño conditions developing between May and July 2026. El Niño episodes are associated with irregular precipitation patterns across cotton-growing regions, historically linked to drought conditions in parts of the US South and disrupted monsoon dynamics in South Asia.

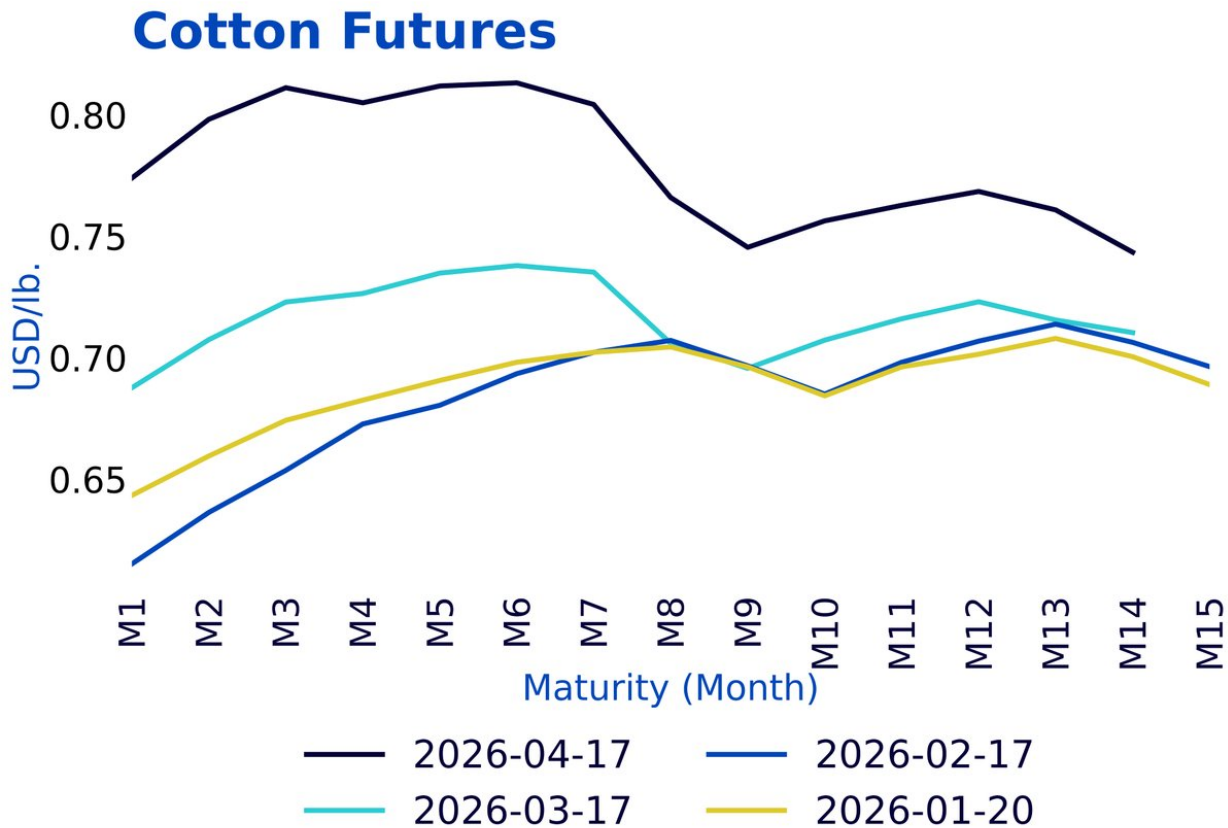
Compounding this, limited fertilizer availability, itself partly a consequence of broader geopolitical disruption, could constrain crop yields even where acreage is maintained. These supply-side vulnerabilities introduce a weather risk premium that has been largely absent from cotton pricing over the past 18 months. Climate risk repricing in agricultural commodities often occurs rapidly and non-linearly.

### Futures curve structure

For investors accessing cotton through exchange-traded products, the shape of the futures curve is as important as the spot price direction. Cotton has historically spent extended periods in contango, a forward curve where later-dated contracts trade at a premium to near-dated contracts, which erodes returns for long investors through negative roll yield as contracts are periodically rolled forward.

The current roll yield picture for cotton warrants careful interpretation. The front month of the cotton futures curve is currently yielding a negative roll of 3%, indicating the curve remains in contango.

### Figure 3: Curve dynamics cotton futures



Source: Bloomberg, WisdomTree as of 17 April 2026. **Historical performance is not an indication of future performance and any investments may go down in value.**

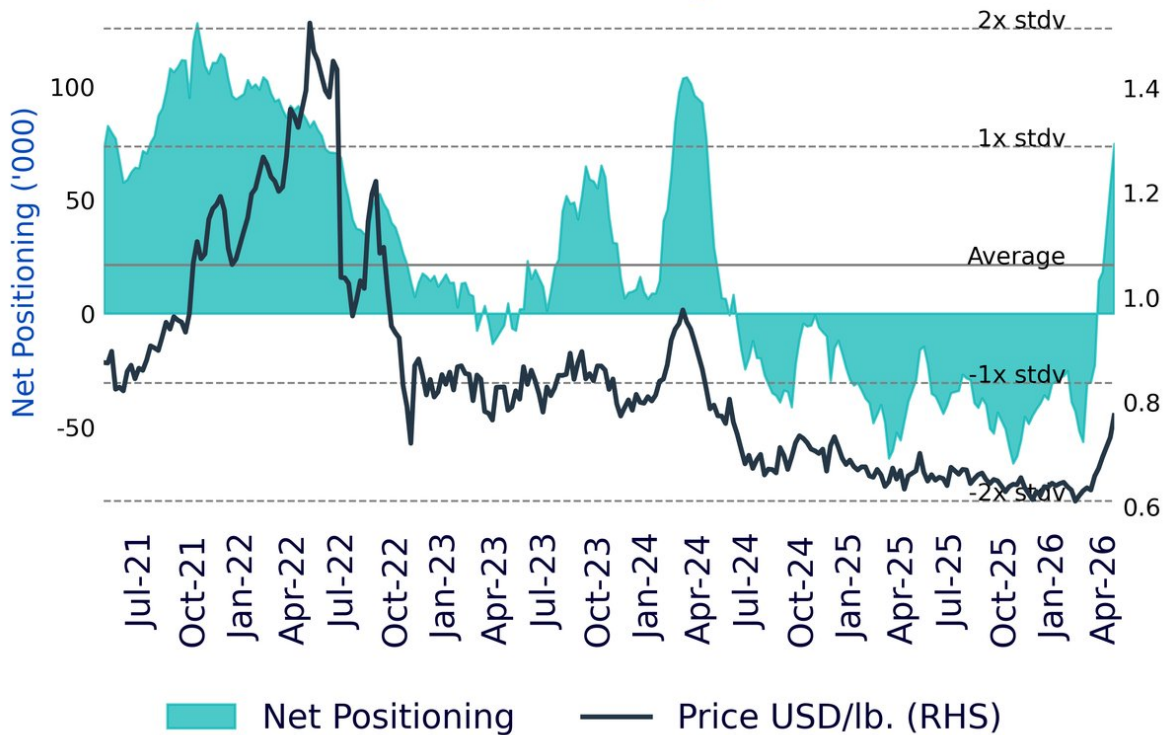
This is a constraint on total return that investors should not overlook, even as spot prices have 12.5% over the prior month and now trade 19% above the 200-day moving average. The negative carry acts as a drag on the overall return profile for the futures-based Exchange Traded Contract holders. However, the key question remains whether tightening nearby supply fundamentals will compress this spread over the coming months as the likelihood of the market transitioning from surplus to deficit is increasing.

### Investor positioning: space for renewed length

The directional signal on positioning is unambiguous. According to the latest Commodity Futures Trading Commission (CFTC) Commitments of Traders data, net speculative positioning in cotton stands at 74,740 contracts, more than three times the five-year average of 21,768 contracts. This marks a dramatic reversal from the -66,025 net short position recorded six months ago and -32,649 one year ago. Last month, net speculative positioning in cotton rose by 417% marking the single largest positioning surge across the entire commodity complex tracked by WisdomTree2.

### Figure 4: Net speculative positioning cotton

## Cotton Net Positioning and Price



Source: Bloomberg Finance L.P., WisdomTree from 17 April 2021 to 17 April 2026. Note: positioning in '000 contracts. Standard deviation based on 5-year average CFTC non-commercial net positioning. **Historical performance is not an indication of future performance, and any investments may go down in value.**

### Investment access

For professional investors seeking direct, liquid exposure to cotton price dynamics, the [WisdomTree Cotton ETC \(Ticker: COTN\)](#) provides single-commodity access to ICE Cotton No. 2 futures, designed to provide investors with a total return exposure to Cotton futures contracts. The ETC aims to replicate the Bloomberg Commodity Cotton Subindex 4W Total Return Index (BCOMCT4T) by tracking the Bloomberg Cotton Sub Excess Return Index, making it a comprehensive vehicle for expressing a view on both the directional price thesis and the evolving carry dynamics.

Investors can also invest in the [WisdomTree Cotton – EUR Daily Hedged ETC \(Ticker: ECTN\)](#) which is a fully collateralised UCITS eligible Exchange Traded Commodity (ETC) designed to provide investors with a total return exposure to cotton futures contracts currency hedged in EUR.

Unlike broader agricultural or soft commodity indices, COTN and ECTN offers pure, undiluted exposure to cotton without the dilution from other uncorrelated agricultural positions.

1 Bloomberg Finance L.P. as of 23 April 2026

2 Bloomberg Finance L.P., WisdomTree from 17 March 2026 to 17 April 2026

## Important Risks Related to this Article

### IMPORTANT INFORMATION

**Marketing communications issued in the European Economic Area (“EEA”):** This document has been issued and approved by WisdomTree Ireland Limited, which is authorised and regulated by the Central Bank of Ireland. **Marketing communications issued in jurisdictions outside of the EEA:** This document has been issued and approved by WisdomTree UK Limited, which is authorised and regulated by the United Kingdom Financial Conduct Authority. WisdomTree Ireland Limited and WisdomTree UK Limited are each referred to as “WisdomTree” (as applicable). Our Conflicts of Interest Policy and Inventory are available on request. This marketing communication is intended for all investors; however, the WisdomTree products described in this document and related materials may be restricted in certain jurisdictions and may only be available to particular categories of investors in accordance with applicable laws and regulations. Where a product is not authorised or its distribution is restricted in your jurisdiction, it is the responsibility of any person or entity in possession of this information to inform themselves of, and comply with, all relevant restrictions. Before making any investment, investors should seek appropriate legal, regulatory, tax and investment advice to assess the suitability and implications of investing in these products. Information about WisdomTree products is available at [wisdomtree.eu](http://wisdomtree.eu). WisdomTree does not offer investment advice tailored to individual circumstances. Past performance is not a reliable indicator of future performance. Any historical performance included in this document may be based on back testing. Back testing is the process of evaluating an investment strategy by applying it to historical data to simulate what the performance of such strategy would have been. Back tested performance is purely hypothetical and is provided in this document solely for informational purposes. Back tested data does not represent actual performance and should not be interpreted as an indication of actual or future performance. The value of any investment may be affected by exchange rate movements. Any decision to invest should be based on the information contained in the appropriate prospectus and after seeking independent investment, tax and legal advice. The content of this document does not constitute investment advice nor an offer for sale nor a solicitation of an offer to buy any product or make any investment. An investment in exchange-traded products (“ETPs”) is dependent on the performance of the underlying index, less costs, but it is not expected to match that performance precisely. ETPs involve numerous risks including among others, general market risks relating to the relevant underlying index, credit risks on the provider of index swaps utilised in the ETP, exchange rate risks, interest rate risks, inflationary risks, liquidity risks and legal and regulatory risks. The information contained in this document is not, and under no circumstances is to be construed as, an advertisement or any other step in furtherance of a public offering of shares in the United States or any province or territory thereof, where none of the issuers or their products are authorised or registered for distribution and where no prospectus of any of the issuers has been filed with any securities commission or regulatory authority. No document or information in this document should be taken, transmitted or distributed (directly or indirectly) into the United States. None of the issuers, nor any securities issued by them, have been or will be registered under the United States Securities Act of 1933 or the Investment Company Act of 1940 or qualified under any applicable state securities statutes. This document may contain independent market commentary prepared by WisdomTree

based on publicly available information. Although WisdomTree endeavours to ensure the accuracy of the content in this document, WisdomTree does not warrant or guarantee its accuracy or correctness. Any third party data providers used to source the information in this document make no warranties or representation of any kind relating to such data. Where WisdomTree has expressed its own opinions related to product or market activity, these views may change. Neither WisdomTree, nor any affiliate, nor any of their respective officers, directors, partners, or employees accepts any liability whatsoever for any direct or consequential loss arising from any use of this document or its contents. This document may contain forward looking statements including statements regarding our belief or current expectations with regards to the performance of certain assets classes and/or sectors. Forward looking statements are subject to certain risks, uncertainties and assumptions. There can be no assurance that such statements will be accurate and actual results could differ materially from those anticipated in such statements. WisdomTree strongly recommends that you do not place undue reliance on these forward-looking statements. Jersey Issuers The products discussed in this document are issued by WisdomTree Commodity Securities Limited and WisdomTree Hedged Commodity Securities Limited (the "Issuer"). The Issuer is regulated by the Jersey Financial Services Commission. Investors should read the prospectus of the Issuer before investing and should refer to the section of the prospectus entitled »Risk Factors¼ for further details of risks associated with an investment in the securities offered by the Issuer.

WisdomTree Hedged Commodity Securities Limited Securities issued by the Issuer are direct, limited recourse obligations of the relevant Issuer alone and are not obligations of or guaranteed by Citigroup Global Markets Limited ("CGML"), Citigroup Global Markets Holdings Inc. ("CGMH"), Merrill Lynch International ("MLI"), Bank of America Corporation ("BAC") or any of their affiliates. Each of CGML, CGMH, MLI and BAC disclaim all and any liability whether arising in tort, contract or otherwise which they might have in respect of this document or its contents otherwise arising in connection herewith. "Bloomberg®" and the Bloomberg Commodity Index(es)<sup>SM</sup> referenced herein are service marks of Bloomberg Finance L.P. and its affiliates, including Bloomberg Index Services Limited ("BISL"), the administrator of the indices (collectively, "Bloomberg") and have been licensed for use for certain purposes by WisdomTree and its permitted affiliates including WisdomTree Hedged Commodity Securities Limited (together, WisdomTree). Bloomberg is not affiliated with WisdomTree, and Bloomberg does not approve, endorse, review, or recommend the exchange-traded product(s) referenced herein. Bloomberg does not guarantee the timeliness, accurateness, or completeness of any data or information relating to the index(es) WisdomTree Commodity Securities Limited Securities issued by the Issuer are direct, limited recourse obligations of the relevant Issuer alone and are not obligations of or guaranteed by Citigroup Global Markets Limited ("CGML"), Citigroup Global Markets Holdings Inc. ("CGMH"), Merrill Lynch International ("MLI"), Bank of America Corporation ("BAC") or any of their affiliates. Each of CGML, CGMH, MLI and BAC disclaim all and any liability whether arising in tort, contract or otherwise which they might have in respect of this document or its contents otherwise arising in connection herewith. "Bloomberg®" and the Bloomberg Commodity Index(es)<sup>SM</sup> referenced herein are service marks of Bloomberg Finance L.P. and its affiliates, including Bloomberg Index Services Limited ("BISL"), the administrator of the indices (collectively, "Bloomberg") and have been licensed for use for certain purposes by WisdomTree UK Limited and its permitted affiliates including WisdomTree Commodity Securities Limited (together, WisdomTree). Bloomberg is not affiliated

with WisdomTree, and Bloomberg does not approve, endorse, review, or recommend the exchange-traded product(s) referenced herein. Bloomberg does not guarantee the timeliness, accurateness, or completeness of any data or information relating to the index(es).

**For Investors in Switzerland – Qualified Investors** This document constitutes an advertisement of the financial product(s) mentioned herein. In Switzerland, this communication is only targeted at Qualified Investors. The prospectus and the key investor information documents (KID) are available from WisdomTree's website: <https://www.wisdomtree.eu/en-ch/resource-library/prospectus-and-regulatory-reports>

**For Investors in Monaco:** This communication is only intended for duly registered banks and/or licensed portfolio management companies in Monaco. This communication must not be sent to the public in Monaco.