

# What's hot: Short-covering rally drives silver higher

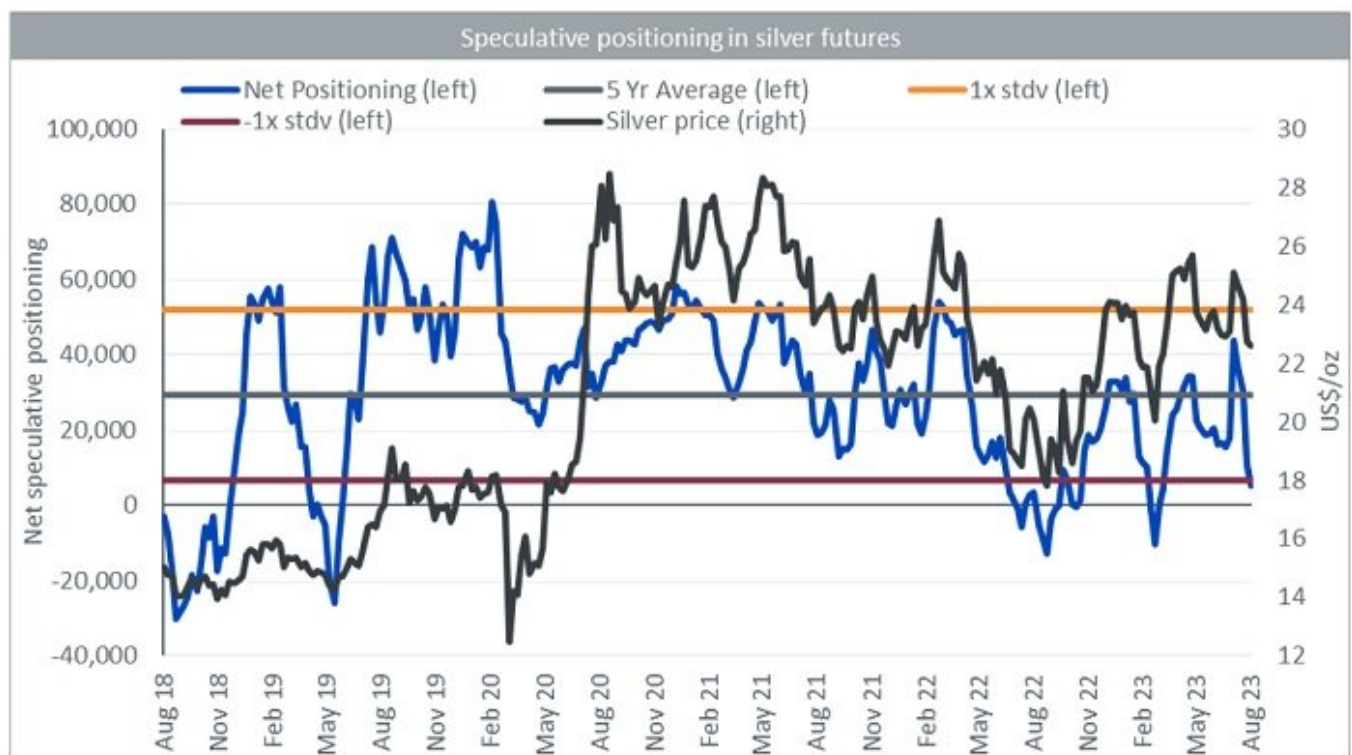
Published 25 August 2023

## Nitesh Shah

Head of Commodities and Macroeconomic Research, WisdomTree Europe

With a 7.95% rally in the past week (to 16.30 23/08/2023)<sup>1</sup>, silver is on the cusp of reversing all the past month's losses. Bearishness in the metal is reversing quickly.

Net speculative positioning in silver futures fell 88% in the month to 15/08/2023<sup>2</sup>, with positioning now 1 standard deviation below its 5-year average<sup>3</sup>. However, we suspect that excessive shorts were being covered in the past week (data will be published by Commodity Futures Trading Commission on Friday 25/08/2023 relating to Tuesday 22/08/2023 i.e. after we publish this note).



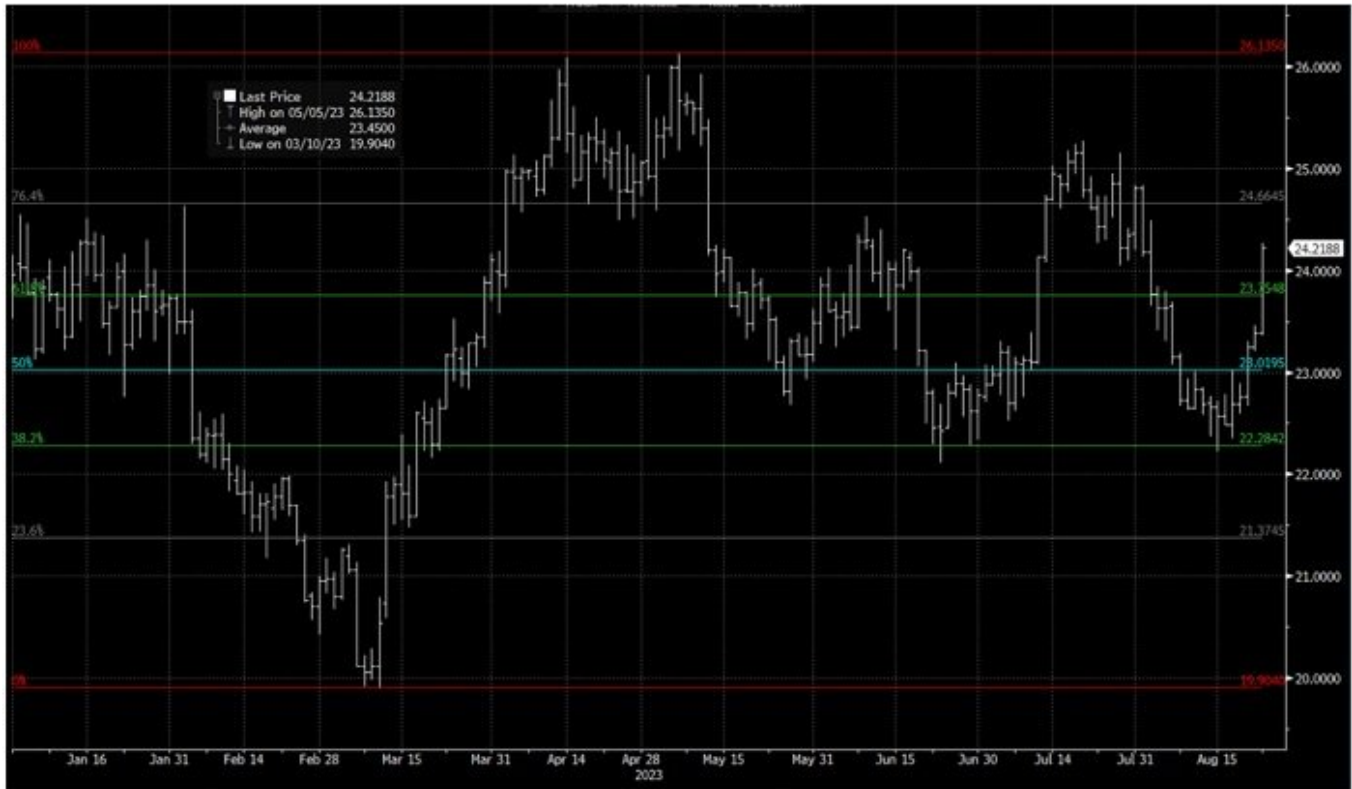
Source: Bloomberg, WisdomTree, 14/08/2018 to 15/08/2023. Stdv = standard deviation. **Historical performance is not an indication of future performance and any investments may go down in value**

## Technicals supportive

Since hitting an intra-day local low of US\$22.35/oz at 13.30 on 15/08/2023 silver prices have bounced up to US\$24.27/oz at 16.30 on 23/08/2023 (+8.6%)<sup>4</sup>. That low point seems to match the Fibonacci-implied

support levels<sup>5</sup> looking at year-to-date silver performance (the 38.2% retracement, Figure 2). At 16.30 on 23/08/2023, silver appear to have pierced through the 61.8% retracement resistance (Figure 2), which technical analysts would see as a bullish sign. The next retracement level (76.4%) is at US\$24.66/oz and we will see that presents a support or resistance.

**Figure 2: Fibonacci retracements**



### Have investors become less gloomy about silver?

Silver inventory in London Bullion Market Association vaults which fell precipitously in 2022 (-28%), has stabilised and gained 3% year to July 2023. That indicates more institutional investors are allocating to silver, this year but from a very low base last year. Silver holding in exchange traded commodities (ETCs) have only modestly declined in 2023 so far (4%) after a 15% decline in 2022 (source: Bloomberg, 23/08/2023). So, while the ETC investors are no longer dumping the metal aggressively as they were in 2022, they are not yet rebuilding.

WisdomTree have witnessed a whopping 198% rise in silver web page views in the ten days to 23 August 2023 over the prior ten days, possibly indicating that silver is once again grabbing the attention of ETC investors.

### Related blogs

+ [Silver: the great retail vs institutional divide](#)

1 Source Bloomberg

2 Source Bloomberg, Commodity Futures Trading Commission

3 Source Bloomberg, Commodity Futures Trading Commission

4 Source Bloomberg

**Related products**

+ [WisdomTree Physical Silver \(PHAG\)](#)

+ [WisdomTree Silver \(SLVR\)](#)

+ [WisdomTree Silver - EUR Daily Hedged \(ESVR\)](#)

+ [WisdomTree Silver 2x Daily Leveraged \(LSIL\)](#)

+ [WisdomTree Silver 3x Daily Leveraged \(3SIL\)](#)

+ [WisdomTree Silver 1x Daily Short \(SSIL\)](#)

+ [WisdomTree Silver 3x Daily Short \(3SIS\)](#)

## Important Risks Related to this Article

### Important Information

**Marketing communications issued in the European Economic Area (“EEA”):** This document has been issued and approved by WisdomTree Ireland Limited, which is authorised and regulated by the Central Bank of Ireland.

**Marketing communications issued in jurisdictions outside of the EEA:** This document has been issued and approved by WisdomTree UK Limited, which is authorised and regulated by the United Kingdom Financial Conduct Authority.

WisdomTree Ireland Limited and WisdomTree UK Limited are each referred to as “WisdomTree” (as applicable). Our Conflicts of Interest Policy and Inventory are available on request.

**For professional clients only. The information contained in this document is for your general information only and is neither an offer for sale nor a solicitation of an offer to buy securities or shares. This document should not be used as the basis for any investment decision. Investments may go up or down in value and you may lose some or all of the amount invested. Past performance is not necessarily a guide to future performance. Any decision to invest should be based on the information contained in the appropriate prospectus and after seeking independent investment, tax and legal advice.**

The application of regulations and tax laws can often lead to a number of different interpretations. Any views or opinions expressed in this communication represent the views of WisdomTree and should not be construed as regulatory, tax or legal advice. WisdomTree makes no warranty or representation as to the accuracy of any of the views or opinions expressed in this communication. Any decision to invest should be based on the information contained in the appropriate prospectus and after seeking independent investment, tax and legal advice.

This document is not, and under no circumstances is to be construed as, an advertisement or any other step in furtherance of a public offering of shares or securities in the United States or any province or territory thereof. Neither this document nor any copy hereof should be taken, transmitted or distributed (directly or indirectly) into the United States.

Although WisdomTree endeavours to ensure the accuracy of the content in this document, WisdomTree does not warrant or guarantee its accuracy or correctness. Where WisdomTree has expressed its own opinions related to product or market activity, these views may change. Neither WisdomTree, nor any affiliate, nor any of their respective officers, directors, partners, or employees accepts any liability whatsoever for any direct or consequential loss arising from any use of this document or its contents.