

NAV DOESN'T MEAN FREE: ETFs VS. MUTUAL FUNDS

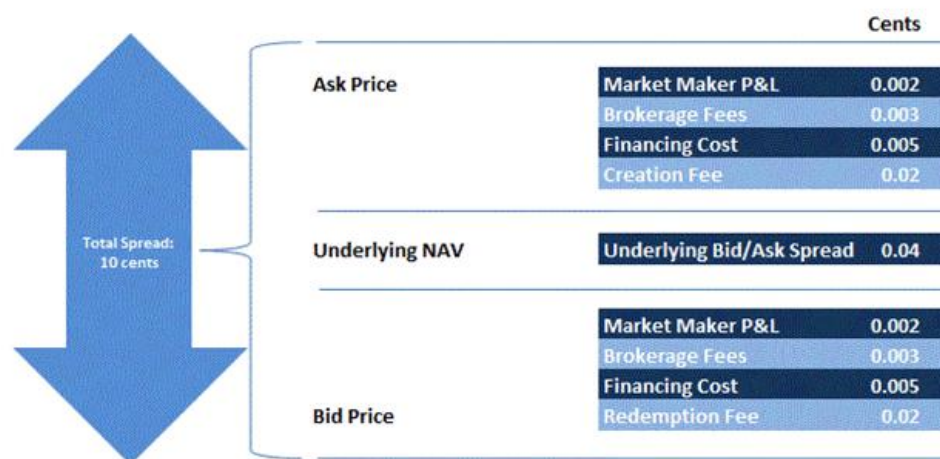
Michael Barrer — Director of Capital Markets

11/29/2018

[ETFs and mutual funds get compared constantly, and we have covered the topic numerous times in the past.](#) Today we zoom in on one key difference between ETFs and [mutual funds](#): how transactions are executed. Investors of mutual funds like the fact that the funds transact at [net asset value \(NAV\)](#), because they think they're not paying the [spread](#) seen on-screen for ETFs. In fact, mutual funds, just like ETFs, are wrappers around baskets of securities. And just because a mutual fund transaction occurred at NAV, does not mean it was FREE! In fact, based on a broad study of 3,799 mutual funds from 1995 to 2006, it's estimated that the funds' aggregate trading costs were 144 [basis point \(bps\)](#) a year, on top of the expense ratios.¹

The main difference between ETFs and mutual funds is that ETFs are traded on an exchange and, as a result, the spread cost is fully transparent. Mutual fund holdings are not transparent, and nor are the costs baked into the NAV. With ETFs, investors know the exact cost to enter and exit their position, as illustrated by the spread seen on the exchange. Figure 1 deconstructs a basic ETF spread, using the [WisdomTree U.S. MidCap Earnings Fund \(EZM\)](#) from October 2018 as an example.

Figure 1: Building Blocks of a Basic ETF Spread—EZM



Source: WisdomTree, as of 10/30/18. Subject to change.

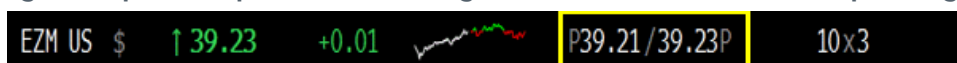
As you can see in Figure 1, the full cost spread of 10 cents in EZM consists of the spread of every underlying stock in the basket, transaction costs and a small fee for the market maker's service. This spread defines what is known in the ETF industry as the "[arbitrage band](#)," or the cost a market maker would incur to transact in the underlying portfolio. In contrast, if an investor purchased a mutual fund with the same underlying portfolio as EZM, he or she would send their money to the mutual fund company and receive NAV in return. But what determines a mutual fund's NAV? Besides the value of the holdings, a mutual fund's NAV is reduced by the same kinds of costs that investors see in the real-time [bid/of](#)

[fer](#) spreads of ETFs. The spread or costs for a mutual fund may not be visible, but that doesn't mean they don't exist.

Additional [Liquidity](#) Benefit:

An added bonus of the ETF structure can come into play once an ETF reaches critical mass and begins to trade more frequently. The ETF can trade inside its arbitrage band, which is less than the cost to transact in the underlying portfolio. Natural buyers and sellers meet on an exchange and trades are paired with no need for transactions in the underlying portfolio. The net benefit to investors once an ETF reaches this level of liquidity is a savings in transaction costs, from not trading in the underlying market. Figure 2 shows EZM trading at a 2-cent [bid/ask spread](#) and proves the ETF can trade below its 10-cent arbitrage band. Mutual funds never have this opportunity, as the portfolio manager always needs to buy or sell assets when money comes into or out of the fund. Trading in the mutual fund will cause it to incur costs that are very similar to those seen in the ETF spread example in figure 1, and each transaction will erode the mutual fund's NAV.

Figure 2: Spread Snapshot Inside Arbitrage Band—WisdomTree U.S. MidCap Earnings Fund (EZM)



Source: WisdomTree, as of 11/8/18. Subject to change.

Mutual Fund Trading Costs Impact All Holders

The final key difference when it comes to trading costs for ETFs compared to mutual funds is that every transaction cost in an ETF is independent and borne by the investor making that transaction. The [creation/redemption process](#) in ETFs allows for shares of the underlying portfolio to be transferred [in-kind](#) in exchange for ETF shares by a middle man, known as an [authorized participant \(AP\)](#). This means that transactions in the underlying portfolio are executed by liquidity providers, outside of the ETF portfolio, and those costs are baked into each investor's execution (spread). In a mutual fund, however, all trading of the underlying securities occurs inside the portfolio and every trade cost is shared by all investors regardless of their percentage ownership in the fund.

The bottom line is that ETFs are built on a backbone of transparency, while mutual funds are opaque in nature. The next time you look at ETF spreads, remember what makes up the spread and that only the transacting investor bears the cost. Mutual funds may trade at NAV, but do not be mistaken—execution is not free!

¹Roger Edelen, Richard Evans, and Gregory Kadlec, "Shedding Light on 'Invisible' Costs: Trading Costs and Mutual Fund Performance," Financial Analysts Journal, 1/1/13.

Important Risks Related to this Article

There are risks associated with investing, including possible loss of principal. Funds focusing their investments on certain sectors and/or smaller companies increase their vulnerability to any single economic or regulatory development. This may result in greater share price volatility. Please read the Fund's prospectus for specific details regarding the Fund's risk profile.

For standardized performance and the most recent month-end performance click [here](#) NOTE, this material is intended for electronic use only. Individuals who intend to print and physically deliver to an investor must print the monthly performance report to accompany this blog.

For more investing insights, check out our [Economic & Market Outlook](#)

View the online version of this article [here](#).

IMPORTANT INFORMATION

U.S. investors only: Click [here](#) to obtain a WisdomTree ETF prospectus which contains investment objectives, risks, charges, expenses, and other information; read and consider carefully before investing.

There are risks involved with investing, including possible loss of principal. Foreign investing involves currency, political and economic risk. Funds focusing on a single country, sector and/or funds that emphasize investments in smaller companies may experience greater price volatility. Investments in emerging markets, currency, fixed income and alternative investments include additional risks. Please see prospectus for discussion of risks.

Past performance is not indicative of future results. This material contains the opinions of the author, which are subject to change, and should not to be considered or interpreted as a recommendation to participate in any particular trading strategy, or deemed to be an offer or sale of any investment product and it should not be relied on as such. There is no guarantee that any strategies discussed will work under all market conditions. This material represents an assessment of the market environment at a specific time and is not intended to be a forecast of future events or a guarantee of future results. This material should not be relied upon as research or investment advice regarding any security in particular. The user of this information assumes the entire risk of any use made of the information provided herein. Neither WisdomTree nor its affiliates, nor Foreside Fund Services, LLC, or its affiliates provide tax or legal advice. Investors seeking tax or legal advice should consult their tax or legal advisor. Unless expressly stated otherwise the opinions, interpretations or findings expressed herein do not necessarily represent the views of WisdomTree or any of its affiliates.

The MSCI information may only be used for your internal use, may not be reproduced or re-disseminated in any form and may not be used as a basis for or component of any financial instruments or products or indexes. None of the MSCI information is intended to constitute investment advice or a recommendation to make (or refrain from making) any kind of investment decision and may not be relied on as such. Historical data and analysis should not be taken as an indication or guarantee of any future performance analysis, forecast or prediction. The MSCI information is provided on an "as is" basis and the user of this information assumes the entire risk of any use made of this information. MSCI, each of its affiliates and each entity involved in compiling, computing or creating any MSCI information (collectively, the "MSCI Parties") expressly disclaims all warranties. With respect to this information, in no event shall any MSCI Party have any liability for any direct, indirect, special, incidental, punitive, consequential (including loss profits) or any other damages (www.msci.com)

Jonathan Steinberg, Jeremy Schwartz, Rick Harper, Christopher Gannatti, Bradley Krom, Tripp Zimmerman, Michael Barrer, Anita Rausch, Kevin Flanagan, Brendan Loftus, Joseph Tenaglia, Jeff Weniger, Matt Wagner, Alejandro Saltiel, Ryan Krystopowicz, Jianing Wu, and Brian Manby are registered representatives of Foreside Fund Services, LLC.

WisdomTree Funds are distributed by Foreside Fund Services, LLC, in the U.S. only.

You cannot invest directly in an index.

DEFINITIONS

Mutual Funds : An investment vehicle made up of a pool of moneys collected from many investors for the purpose of investing in securities such as stocks, bonds, money market instruments and other assets.

Net Asset Value (NAV) : The calculated assets minus liabilities divided by shares outstanding. NAV is the straightforward account of the actual assets in the fund.

Spread : Typically refers to a difference between a measure of yield for one asset class and a measure of yield for either a different subset of that asset class or a different asset class entirely.

Basis point : 1/100th of 1 percent.

Arbitrage Mechanism : The ability to compare the price of an ETF and its underlying basket and exchange one for the other utilizing the creation and redemption process.

Bid Price : The price that someone will buy an ETF.

Offer : The price at which investors are willing to sell.

Liquidity : The degree to which an asset or security can be bought or sold in the market without affecting the asset's price. Liquidity is characterized by a high level of trading activity. Assets that can be easily bought or sold are known as liquid assets.

Bid/Ask Spread : This is essentially the difference in price between the highest price that a buyer is willing to pay for an asset and the lowest price for which a seller is willing to sell it.

Creation and Redemption Process : The process whereby an ETF issuer takes in and disburses baskets of assets in exchange for the issuance or removal of new ETF shares.

In-Kind Creation/Redemption : The process of exchanging a basket of assets for ETF shares.

Authorized Participant (AP) : An entity, usually an institutional investor, that submits orders to the ETF for the creation and redemption of ETF creation units.