

BULLISH U.S. CORPORATE CREDIT: THE OTHER SIDE OF TAX REFORM

Bradley Krom — Head of U.S. Research

10/23/2017

Although many investors remain focused on the potential impact of U.S. tax reform on corporate earnings, we believe any change in tax policy can have an equally important effect on the price and supply of corporate [credit](#). While the remainder of this piece will highlight this logic, our unambiguous takeaway is that we believe credit can continue to outperform low-risk assets over the next 12 to 18 months.

Financial Impact

As we explained previously, [companies with high marginal tax rates may see the most significant effect on their earnings](#). However, in order to blunt the net revenue impact to the government, the Trump administration has also proposed that it may want to partially limit the tax deductibility of interest expenses. In our view, it is likely that this provision will be used as a bargaining chip with deficit [hawks](#), as previous estimates found that interest deductibility costs the federal government \$27 billion per year.¹ Assuming a zero multiplier, this could generate nearly \$270 billion in net revenue for the government over the ever important 10-year CBO scoring period. To potentially dampen this de facto tax increase on companies, they would also likely make [capex](#) fully deductible in the first year.²

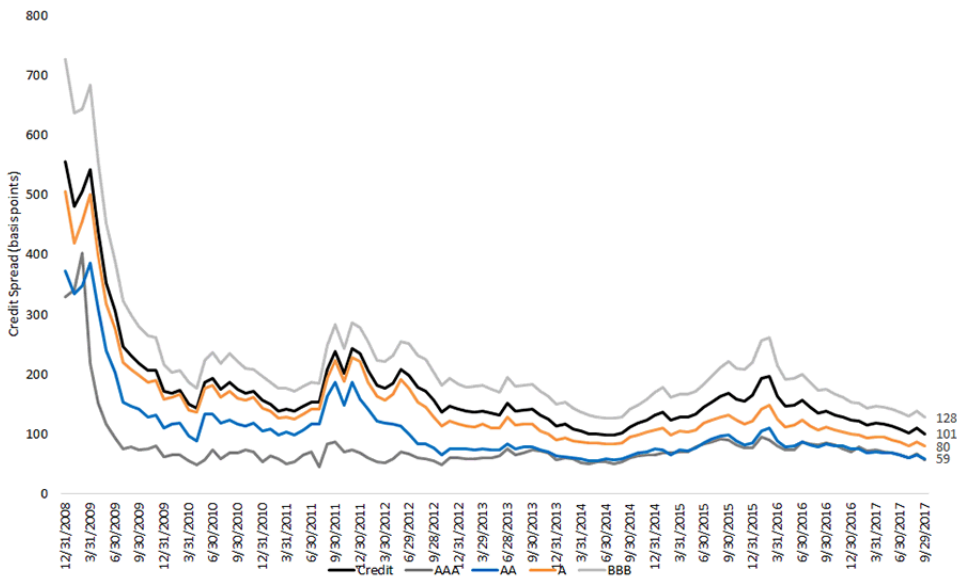
Under the current system of interest expense and capex deductibility, [leverage](#) has a negative tax rate.

Turning back to Finance 100, firms should theoretically seek to maximize the efficiency of their capital structure by attempting to minimize their cost of capital. Given that corporations are currently able to deduct their interest expense, firms tend to deploy leverage in order to optimize their financing mix. Put another way, a company's demand for debt should be proportional to the relative [cost of equity](#) and the firm's benefit from the corporate [debt tax shield](#). In the short run, tax cuts could increase earnings, increase [free cash flow](#) and stabilize [P/E multiples](#). In the long run, tax cuts could diminish the benefit of the corporate debt tax shield, decrease leverage and shift corporations away from debt, thus increasing the demand/cost of equity. However, given that legacy debt would likely be grandfathered in,³ these changes would occur only as previously issued debt rolled off/matured. In our view, this implies that [corporate debt](#) issuance could decline and aggregate [credit quality](#) could improve.

Is Credit Cheap or Expensive?

In the chart below, we show the current incremental cost that [investment-grade](#) corporations must pay to borrow. Earnings growth has been robust, global economic growth has been accelerating and many financial markets are near all-time highs. Similarly, the cost of credit is approaching the lows of the cycle. For many investors, this implies that it may make sense to reduce credit risk in bond portfolios. While that may have been true for tactical players, absent a catalyst for a retracement, we believe strategic investors should continue to benefit from higher yields offered by riskier credits. Below, we highlight our rationale for why [credit spreads](#) may be ready to [tighten](#) to fresh all-time lows.

Credit Spreads by Rating Bucket, 12/31/08 –9/30/17



Source: Bloomberg, as of 9/30/17. Credit, AAA, AA, A and BBB proxied by the Bloomberg Barclays U.S. Corporate Index, Bloomberg Barclays Aaa Corporate Index, Bloomberg Barclays Aa Corporate Index, Bloomberg Barclays A Corporate Index and Bloomberg Barclays Baa Corporate Index, respectively. Past performance is not indicative of future results. You cannot invest directly in an index.

Market Technicals

A decrease in the long-run financing needs of corporations implies that with constant investor demand, credit spreads should tighten. This logic is largely predicated on the idea that with less debt, companies may rely on a larger percentage of equity financing. This shift toward equity could mean that the actual risk of bonds not being repaid should decline. As a result, credit spreads at the very highest rungs of the spectrum could shift to primarily become a function of [liquidity risk](#) in the bond market as opposed to credit risk. In our view, while a spread should exist between rating buckets, it is likely that you would see a meaningful parallel shift lower in credit spreads over time. Similarly, with less supply coming on to the market in the long run, it is also possible that bond market liquidity could actually improve despite current concerns to the contrary.

In a recent note by Goldman Sachs,⁴ it proposes that companies with strong profitability, high capex needs and comparatively low interest expenses are likely to be the key beneficiaries of the likely shift in policy. Put another way, the types of businesses screened by our fundamental approach to investment-grade credit. The [WisdomTree Fundamental U.S. Corporate Bond Fund \(WFIG\)](#) screens publicly traded companies with attractive [free cash flow](#)/debt service, leverage and [return on invested capital](#). As a result, free cash flow could be likely to increase, leverage is likely to decline further and more profitable companies could see a greater benefit.

In sum, taxes will likely have a greater impact for equity investors, but their benefits should not be discounted for fixed income. While far from a done deal, should the deductibility of interest income be reduced or eliminated, there may be a long-run structural bull case for a reduction in credit spreads going forward.

¹Source: Congressional Budget Office, 2017.

²Under the current system, 50% is deductible in the first year with the remainder being deductible at an accelerated depreciation rate.

³This eliminates the impact on nonoperating profitability

⁴Goldman Sachs, The Credit Trader, 9/28/17.

Important Risks Related to this Article

There are risks associated with investing, including possible loss of principal. Fixed income investments are subject to interest rate risk; their value will normally decline as interest rates rise. Fixed income investments are also subject to credit risk, the risk that the issuer of a bond will fail to pay interest and principal in a timely manner or that negative perceptions of the issuer's ability to make such payments will cause the price of that bond to decline. While the Fund attempts to limit credit and counterparty exposure, the value of an investment in the Fund may change quickly and without warning in response to issuer or counterparty defaults and changes in the credit ratings of the Fund's portfolio investments. Please read the Fund's prospectus for specific details regarding the Fund's risk profile.

Neither WisdomTree Investments, Inc. nor its affiliates, nor Foreside Fund Services, LLC., or its affiliates provide tax advice. All references to tax matters or information provided on this site are for illustrative purposes only and should not be considered tax advice and cannot be used for the purpose of avoiding tax penalties. Investors seeking tax advice should consult an independent tax advisor.

For standardized performance and the most recent month-end performance click [here](#) NOTE, this material is intended for electronic use only. Individuals who intend to print and physically deliver to an investor must print the monthly performance report to accompany this blog.

For more investing insights, check out our [Economic & Market Outlook](#)

View the online version of this article [here](#).

IMPORTANT INFORMATION

U.S. investors only: Click [here](#) to obtain a WisdomTree ETF prospectus which contains investment objectives, risks, charges, expenses, and other information; read and consider carefully before investing.

There are risks involved with investing, including possible loss of principal. Foreign investing involves currency, political and economic risk. Funds focusing on a single country, sector and/or funds that emphasize investments in smaller companies may experience greater price volatility. Investments in emerging markets, currency, fixed income and alternative investments include additional risks. Please see prospectus for discussion of risks.

Past performance is not indicative of future results. This material contains the opinions of the author, which are subject to change, and should not to be considered or interpreted as a recommendation to participate in any particular trading strategy, or deemed to be an offer or sale of any investment product and it should not be relied on as such. There is no guarantee that any strategies discussed will work under all market conditions. This material represents an assessment of the market environment at a specific time and is not intended to be a forecast of future events or a guarantee of future results. This material should not be relied upon as research or investment advice regarding any security in particular. The user of this information assumes the entire risk of any use made of the information provided herein. Neither WisdomTree nor its affiliates, nor Foreside Fund Services, LLC, or its affiliates provide tax or legal advice. Investors seeking tax or legal advice should consult their tax or legal advisor. Unless expressly stated otherwise the opinions, interpretations or findings expressed herein do not necessarily represent the views of WisdomTree or any of its affiliates.

The MSCI information may only be used for your internal use, may not be reproduced or re-disseminated in any form and may not be used as a basis for or component of any financial instruments or products or indexes. None of the MSCI information is intended to constitute investment advice or a recommendation to make (or refrain from making) any kind of investment decision and may not be relied on as such. Historical data and analysis should not be taken as an indication or guarantee of any future performance analysis, forecast or prediction. The MSCI information is provided on an "as is" basis and the user of this information assumes the entire risk of any use made of this information. MSCI, each of its affiliates and each entity involved in compiling, computing or creating any MSCI information (collectively, the "MSCI Parties") expressly disclaims all warranties. With respect to this information, in no event shall any MSCI Party have any liability for any direct, indirect, special, incidental, punitive, consequential (including loss profits) or any other damages (www.msci.com)

Jonathan Steinberg, Jeremy Schwartz, Rick Harper, Christopher Gannatti, Bradley Krom, Tripp Zimmerman, Michael Barrer, Anita Rausch, Kevin Flanagan, Brendan Loftus, Joseph Tenaglia, Jeff Weniger, Matt Wagner, Alejandro Saltiel, Ryan Krystopowicz, Kara Marciscano, Jianing Wu and Brian Manby are registered representatives of Foreside Fund Services, LLC.

WisdomTree Funds are distributed by Foreside Fund Services, LLC, in the U.S. only.

You cannot invest directly in an index.

DEFINITIONS

Credit : A contractual agreement in which a borrower receives something of value now and agrees to repay the lender at some date in the future.

Hawkish : Description used when worries about inflation are the primary concerns in setting monetary policy decisions.

Capex : Funds used by a company to acquire or upgrade physical assets such as property, industrial buildings or equipment. This type of outlay is made by companies to maintain or increase the scope of their operations.

Leverage : Total assets divided by equity. Higher numbers indicate greater borrowing to finance asset purchases; leverage can tend to make positive performance more positive and negative performance more negative.

Cost Of Equity : Represents the amount of compensation investors demand to invest in the future profits of company.

Debt Tax Shield : the amount in which corporations can reduce their taxable income by issuing debt.

Earnings multiple : another way of saying price-to-earnings multiple.

Corporate debt : Bonds a company issues in order to raise money.

Credit quality : A measure of a borrowers potential risk of default.

Investment Grade : A rating given to a municipal or corporate bond. It is a relatively favorable rating by either Moody's or Standard & Poor's indicating a higher chance an issuer performs interest and principal obligations as promised by the terms of the debt issuance.

Credit spread : The portion of a bond's yield that compensates investors for taking credit risk.

Tighten : a decline in the amount of compensation bond holders require to lend to risky borrowers. When spreads tighten, the market is implying that borrowers pose less risk to lenders.

Liquidity Risk : the risk that an investor will not be able to buy or sell a security at quoted prices.

Free Cash Flow : A measure of how much cash is left in the company after taking into account all the necessary expenses, including net capital expenditures.

Return on Invested Capital (ROIC) : Measures the efficiency of invested capital and how it relates to generated returns.